

PACE4 / PCSK6 Antibody (Internal)
Goat Polyclonal Antibody
Catalog # ALS13360**Specification**

PACE4 / PCSK6 Antibody (Internal) - Product Information

Application	IHC
Primary Accession	P29122
Reactivity	Human, Rabbit
Host	Goat
Clonality	Polyclonal
Calculated MW	106kDa KDa

PACE4 / PCSK6 Antibody (Internal) - Additional Information**Gene ID** 5046**Other Names**

Proprotein convertase subtilisin/kexin type 6, 3.4.21.-, Paired basic amino acid cleaving enzyme 4, Subtilisin-like proprotein convertase 4, SPC4, Subtilisin/kexin-like protease PACE4, PCSK6, PACE4

Target/Specificity

Human PCSK6 / PACE4. This antibody is expected to recognize reported isoforms a, b, g and h (NP_002561.1; NP_612192.1; NP_612193.1; NP_612194.1 resp.).

Reconstitution & Storage

Store at -20°C. Minimize freezing and thawing.

Precautions

PACE4 / PCSK6 Antibody (Internal) is for research use only and not for use in diagnostic or therapeutic procedures.

PACE4 / PCSK6 Antibody (Internal) - Protein Information**Name** PCSK6**Synonyms** PACE4**Function**

Serine endoprotease that processes various proproteins by cleavage at paired basic amino acids, recognizing the RXXX[KR]R consensus motif. Likely functions in the constitutive secretory pathway, with unique restricted distribution in both neuroendocrine and non-neuroendocrine tissues.

Cellular Location

[Isoform PACE4A-I]: Secreted. [Isoform PACE4C]: Endoplasmic reticulum. Note=Not secreted, remains probably in zymogen form in endoplasmic reticulum [Isoform PACE4E-I]: Endomembrane system; Peripheral membrane protein. Note=Retained intracellularly probably through a

hydrophobic cluster in their C-terminus [Isoform PACE4B]: Secreted.

Tissue Location

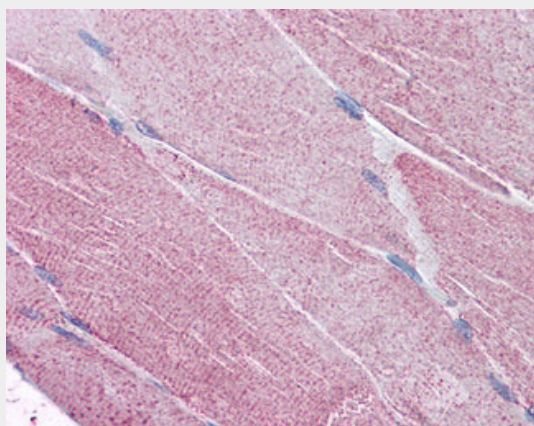
Each PACE4 isoform exhibits a unique restricted distribution. Isoform PACE4A-I is expressed in heart, brain, placenta, lung, skeletal muscle, kidney, pancreas, but at comparatively higher levels in the liver. Isoform PACE4A-II is at least expressed in placenta. Isoform PACE4B was only found in the embryonic kidney cell line from which it was isolated. Isoform PACE4C and isoform PACE4D are expressed in placenta. Isoform PACE4E-I is expressed in cerebellum, placenta and pituitary. Isoform PACE4E-II is at least present in cerebellum

PACE4 / PCSK6 Antibody (Internal) - Protocols

Provided below are standard protocols that you may find useful for product applications.

- [Western Blot](#)
- [Blocking Peptides](#)
- [Dot Blot](#)
- [Immunohistochemistry](#)
- [Immunofluorescence](#)
- [Immunoprecipitation](#)
- [Flow Cytometry](#)
- [Cell Culture](#)

PACE4 / PCSK6 Antibody (Internal) - Images



Anti-PACE4 antibody IHC of human skeletal muscle.

PACE4 / PCSK6 Antibody (Internal) - Background

Likely to represent an endoprotease activity within the constitutive secretory pathway, with unique restricted distribution in both neuroendocrine and non-neuroendocrine tissues and capable of cleavage at the RX(K/R)R consensus motif.

PACE4 / PCSK6 Antibody (Internal) - References

Kiefer M.C., et al. DNA Cell Biol. 10:757-769(1991).
Tsuji A., et al. Biochem. Biophys. Res. Commun. 200:943-950(1994).
Tsuji A., et al. Biochem. Biophys. Res. Commun. 204:1381-1382(1994).
Mori K., et al. Submitted (SEP-1996) to the EMBL/GenBank/DBJ databases.
Mori K., et al. J. Biochem. 121:941-948(1997).