

FTL / Ferritin Light Chain Antibody (C-Terminus)
Goat Polyclonal Antibody
Catalog # ALS13365**Specification**

FTL / Ferritin Light Chain Antibody (C-Terminus) - Product Information

Application	WB, IHC
Primary Accession	P02792
Reactivity	Human, Mouse, Rat, Rabbit, Hamster, Monkey, Pig, Horse, Bovine, Dog
Host	Goat
Clonality	Polyclonal
Calculated MW	20kDa KDa

FTL / Ferritin Light Chain Antibody (C-Terminus) - Additional Information**Gene ID** 2512**Other Names**

Ferritin light chain, Ferritin L subunit, FTL

Target/Specificity

Human FTL.

Reconstitution & Storage

Store at -20°C. Minimize freezing and thawing.

Precautions

FTL / Ferritin Light Chain Antibody (C-Terminus) is for research use only and not for use in diagnostic or therapeutic procedures.

FTL / Ferritin Light Chain Antibody (C-Terminus) - Protein Information**Name** FTL**Function**

Stores iron in a soluble, non-toxic, readily available form. Important for iron homeostasis. Iron is taken up in the ferrous form and deposited as ferric hydroxides after oxidation. Also plays a role in delivery of iron to cells. Mediates iron uptake in capsule cells of the developing kidney (By similarity).

FTL / Ferritin Light Chain Antibody (C-Terminus) - Protocols

Provided below are standard protocols that you may find useful for product applications.

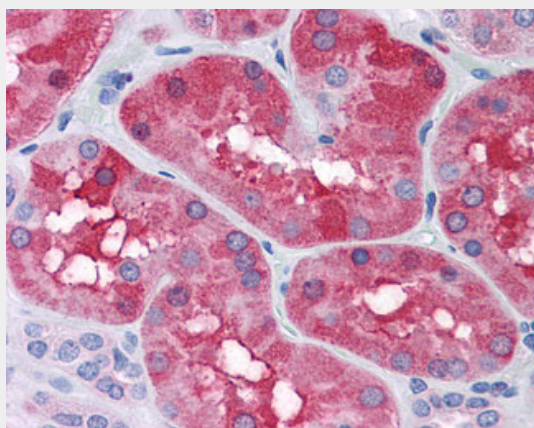
- [Western Blot](#)

- [Blocking Peptides](#)
- [Dot Blot](#)
- [Immunohistochemistry](#)
- [Immunofluorescence](#)
- [Immunoprecipitation](#)
- [Flow Cytometry](#)
- [Cell Culture](#)

FTL / Ferritin Light Chain Antibody (C-Terminus) - Images



Antibody (0.1 ug/ml) staining of Human Placenta lysate (35 ug protein in RIPA buffer).



Anti-FTL antibody IHC of human kidney.

FTL / Ferritin Light Chain Antibody (C-Terminus) - Background

Stores iron in a soluble, non-toxic, readily available form. Important for iron homeostasis. Iron is taken up in the ferrous form and deposited as ferric hydroxides after oxidation. Also plays a role in delivery of iron to cells. Mediates iron uptake in capsule cells of the developing kidney (By similarity).

FTL / Ferritin Light Chain Antibody (C-Terminus) - References

- Boyd D.,et al.J. Biol. Chem. 260:11755-11761(1985).
Dorner M.H.,et al.Proc. Natl. Acad. Sci. U.S.A. 82:3139-3143(1985).
Santoro C.,et al.Nucleic Acids Res. 14:2863-2876(1986).
Jordan T.P.,et al.Submitted (DEC-2002) to the EMBL/GenBank/DDBJ databases.
Ebert L.,et al.Submitted (JUN-2004) to the EMBL/GenBank/DDBJ databases.