

PTBP1 Antibody (clone 3H8)
Mouse Monoclonal Antibody
Catalog # ALS13379**Specification**

PTBP1 Antibody (clone 3H8) - Product Information

Application	WB, IF, IHC
Primary Accession	P26599
Reactivity	Human
Host	Mouse
Clonality	Monoclonal
Calculated MW	57kDa KDa

PTBP1 Antibody (clone 3H8) - Additional Information**Gene ID** 5725**Other Names**

Polypyrimidine tract-binding protein 1, PTB, 57 kDa RNA-binding protein PPTB-1, Heterogeneous nuclear ribonucleoprotein I, hnRNP I, PTBP1, PTB

Reconstitution & Storage

Store at -20°C. Aliquot to avoid freeze/thaw cycles.

Precautions

PTBP1 Antibody (clone 3H8) is for research use only and not for use in diagnostic or therapeutic procedures.

PTBP1 Antibody (clone 3H8) - Protein Information**Name** PTBP1**Synonyms** PTB**Function**

Plays a role in pre-mRNA splicing and in the regulation of alternative splicing events. Activates exon skipping of its own pre- mRNA during muscle cell differentiation. Binds to the polypyrimidine tract of introns. May promote RNA looping when bound to two separate polypyrimidine tracts in the same pre-mRNA. May promote the binding of U2 snRNP to pre-mRNA. Cooperates with RAVER1 to modulate switching between mutually exclusive exons during maturation of the TPM1 pre-mRNA. Represses the splicing of MAPT/Tau exon 10 (PubMed:15009664). Binds to polypyrimidine-rich controlling element (PCE) of CFTR and promotes exon skipping of CFTR exon 9, thereby antagonizing TIA1 and its role in exon inclusion of CFTR exon 9 (PubMed:14966131). Plays a role in the splicing of pyruvate kinase PKM by binding repressively to a polypyrimidine tract flanking PKM exon 9, inhibiting exon 9 inclusion and resulting in exon 10 inclusion and production of the PKM M2 isoform (PubMed:20010808).

target="_blank">20010808). In case of infection by picornaviruses, binds to the viral internal ribosome entry site (IRES) and stimulates the IRES- mediated translation (PubMed:21518806).

Cellular Location

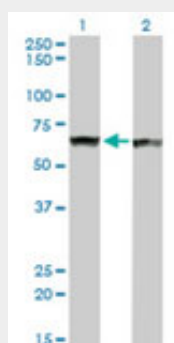
Nucleus.

PTBP1 Antibody (clone 3H8) - Protocols

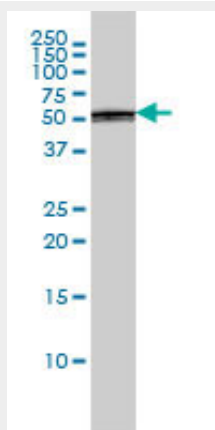
Provided below are standard protocols that you may find useful for product applications.

- [Western Blot](#)
- [Blocking Peptides](#)
- [Dot Blot](#)
- [Immunohistochemistry](#)
- [Immunofluorescence](#)
- [Immunoprecipitation](#)
- [Flow Cytometry](#)
- [Cell Culture](#)

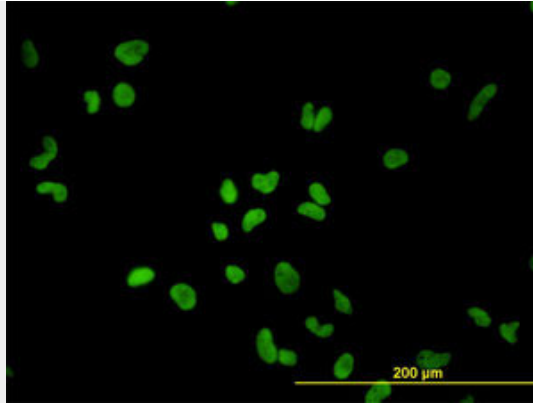
PTBP1 Antibody (clone 3H8) - Images



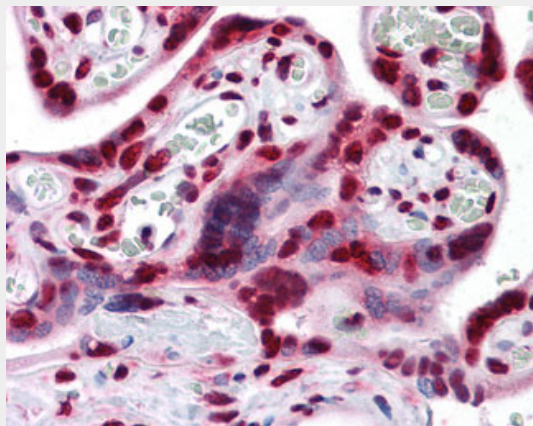
Western blot of PTBP1 expression in transfected 293T cell line by PTBP1 monoclonal antibody...



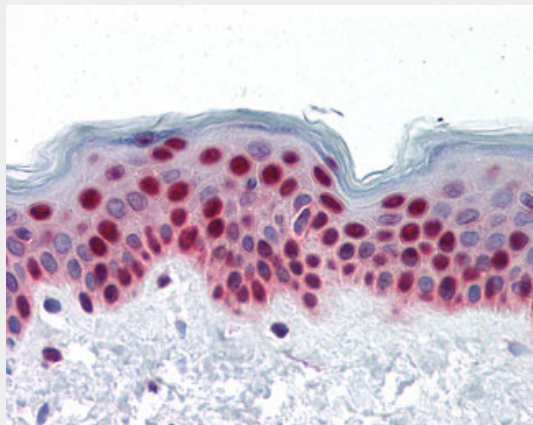
PTBP1 monoclonal antibody clone 3H8 Western blot of PTBP1 expression in A-431.



Immunofluorescence of monoclonal antibody to PTBP1 on HeLa cell (antibody concentration 10 ug/ml).



Anti-PTBP1 antibody IHC of human placenta.



Anti-PTBP1 antibody IHC of human skin.

PTBP1 Antibody (clone 3H8) - Background

Plays a role in pre-mRNA splicing and in the regulation of alternative splicing events. Activates exon skipping of its own pre-mRNA during muscle cell differentiation. Binds to the polypyrimidine tract of introns. May promote RNA looping when bound to two separate polypyrimidine tracts in the same pre-mRNA. May promote the binding of U2 snRNP to pre-mRNA. Cooperates with RAVR1 to modulate switching between mutually exclusive exons during maturation of the TPM1 pre-mRNA. Represses the splicing of MAPT/Tau exon 10.

PTBP1 Antibody (clone 3H8) - References

Gil A., et al. Genes Dev. 5:1224-1236(1991).
Patton J.G., et al. Genes Dev. 5:1237-1251(1991).
Ghetti A., et al. Nucleic Acids Res. 20:3671-3678(1992).
Kalnine N., et al. Submitted (MAY-2003) to the EMBL/GenBank/DDBJ databases.
Grimwood J., et al. Nature 428:529-535(2004).