

TRPC4 Antibody (C-Terminus)
Goat Polyclonal Antibody
Catalog # ALS13435**Specification**

TRPC4 Antibody (C-Terminus) - Product Information

Application	WB, IHC
Primary Accession	O9UBN4
Reactivity	Human, Rat, Dog
Host	Goat
Clonality	Polyclonal
Calculated MW	112kDa KDa

TRPC4 Antibody (C-Terminus) - Additional Information**Gene ID** 7223**Other Names**

Short transient receptor potential channel 4, TrpC4, Trp-related protein 4, hTrp-4, hTrp4, TRPC4

Target/Specificity

Human TRPC4. This antibody is expected to recognise all six reported isoforms (NP_057263.1; NP_003297.1; NP_001129427.1; NP_001129429.1; NP_001129428.1; NP_001129430.1).

Reconstitution & Storage

Store at -20°C. Minimize freezing and thawing.

Precautions

TRPC4 Antibody (C-Terminus) is for research use only and not for use in diagnostic or therapeutic procedures.

TRPC4 Antibody (C-Terminus) - Protein Information**Name** TRPC4**Function**

Forms a receptor-activated non-selective calcium permeant cation channel. Acts as a cell-cell contact-dependent endothelial calcium entry channel. Probably operated by a phosphatidylinositol second messenger system activated by receptor tyrosine kinases or G- protein coupled receptors. Mediates cation entry, with an enhanced permeability to barium over calcium. May also be activated by intracellular calcium store depletion.

Cellular LocationMembrane; Multi-pass membrane protein. Cell membrane; Multi-pass membrane protein.
Note=Enhanced insertion into the cell membrane after activation of the EGF receptor**Tissue Location**

Strongly expressed in placenta. Expressed at lower levels in heart, pancreas, kidney and brain.

Expressed in endothelial cells. Isoform alpha was found to be the predominant isoform. Isoform beta was not found in pancreas and brain

TRPC4 Antibody (C-Terminus) - Protocols

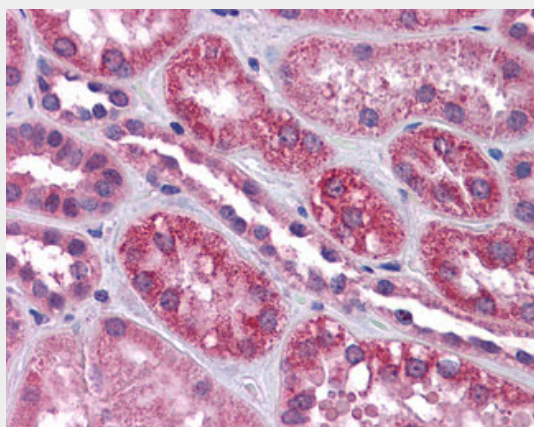
Provided below are standard protocols that you may find useful for product applications.

- [Western Blot](#)
- [Blocking Peptides](#)
- [Dot Blot](#)
- [Immunohistochemistry](#)
- [Immunofluorescence](#)
- [Immunoprecipitation](#)
- [Flow Cytometry](#)
- [Cell Culture](#)

TRPC4 Antibody (C-Terminus) - Images



Antibody (0.3 ug/ml) staining of Rat Brain lysate (35 ug protein in RIPA buffer).



Anti-TRPC4 antibody IHC of human kidney.

TRPC4 Antibody (C-Terminus) - Background

Form a receptor-activated non-selective calcium permeant cation channel. Acts as a cell-cell contact-dependent endothelial calcium entry channel. Probably operated by a phosphatidylinositol second messenger system activated by receptor tyrosine kinases or G-protein coupled receptors. Mediates cation entry, with an enhanced permeability to barium over calcium. May also be

activated by intracellular calcium store depletion.

TRPC4 Antibody (C-Terminus) - References

McKay R.R.,et al.Biochem. J. 351:735-746(2000).

Mery L.,et al.FEBS Lett. 487:377-383(2001).

Schaefer M.,et al.J. Biol. Chem. 277:3752-3759(2002).

Dunham A.,et al.Nature 428:522-528(2004).

Mural R.J.,et al.Submitted (JUL-2005) to the EMBL/GenBank/DDBJ databases.