

LST1 Antibody (clone LST1/02)
Mouse Monoclonal Antibody
Catalog # ALS13470**Specification**

LST1 Antibody (clone LST1/02) - Product Information

Application	IHC
Primary Accession	O00453
Reactivity	Human
Host	Mouse
Clonality	Monoclonal
Calculated MW	11kDa KDa

LST1 Antibody (clone LST1/02) - Additional Information**Gene ID** 7940**Other Names**

Leukocyte-specific transcript 1 protein, Protein B144, LST1, B144

Target/Specificity

The antibody LST1/02 reacts with an extracellular epitope of LST1, an approximately 6-11 kD protein expressed as various transmembrane or soluble forms. LST1 is found predominantly on monocytes and dendritic cells. It migrates on SDS PAGE gels as app ...

Reconstitution & Storage

Short term 4°C, long term aliquot and store at -20°C, avoid freeze thaw cycles.

Precautions

LST1 Antibody (clone LST1/02) is for research use only and not for use in diagnostic or therapeutic procedures.

LST1 Antibody (clone LST1/02) - Protein Information**Name** LST1**Synonyms** B144**Function**

Possible role in modulating immune responses. Induces morphological changes including production of filopodia and microspikes when overexpressed in a variety of cell types and may be involved in dendritic cell maturation. Isoform 1 and isoform 2 have an inhibitory effect on lymphocyte proliferation.

Cellular Location

Membrane; Single-pass membrane protein. Golgi apparatus membrane; Single-pass membrane protein. Endomembrane system; Single-pass membrane protein. Note=Also detected in a perinuclear region corresponding to the localization of the Golgi apparatus and throughout the

cytoplasm

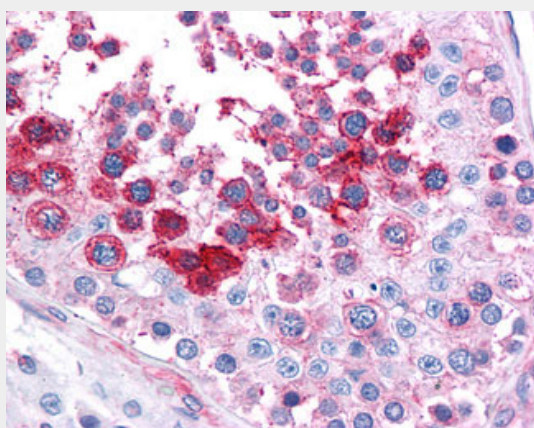
Tissue Location

Expressed in lung, tonsil, thymus, placenta, kidney, fetal spleen, fetal liver and brain

LST1 Antibody (clone LST1/02) - Protocols

Provided below are standard protocols that you may find useful for product applications.

- [Western Blot](#)
- [Blocking Peptides](#)
- [Dot Blot](#)
- [Immunohistochemistry](#)
- [Immunofluorescence](#)
- [Immunoprecipitation](#)
- [Flow Cytometry](#)
- [Cell Culture](#)

LST1 Antibody (clone LST1/02) - Images

Anti-LST1 antibody IHC of human testis.

LST1 Antibody (clone LST1/02) - Background

Possible role in modulating immune responses. Induces morphological changes including production of filopodia and microspikes when overexpressed in a variety of cell types and may be involved in dendritic cell maturation. Isoform 1 and isoform 2 have an inhibitory effect on lymphocyte proliferation.

LST1 Antibody (clone LST1/02) - References

Holzinger I.,et al.Immunogenetics 42:315-322(1995).
de Baey A.,et al.Genomics 45:591-600(1997).
Rollinger-Holzinger I.,et al.J. Immunol. 164:3169-3176(2000).
Xie T.,et al.Genome Res. 13:2621-2636(2003).
Shiina S.,et al.Submitted (SEP-1999) to the EMBL/GenBank/DDBJ databases.