

**THOC6 Antibody (clone 1F6)**  
**Mouse Monoclonal Antibody**  
**Catalog # ALS13497****Specification**

---

**THOC6 Antibody (clone 1F6) - Product Information**

Application	WB, IHC
Primary Accession	<a href="#">Q86W42</a>
Reactivity	Human, Rat
Host	Mouse
Clonality	Monoclonal
Calculated MW	38kDa KDa

**THOC6 Antibody (clone 1F6) - Additional Information****Gene ID** 79228**Other Names**

THO complex subunit 6 homolog, Functional spliceosome-associated protein 35, fSAP35, WD repeat-containing protein 58, THOC6, WDR58

**Reconstitution & Storage**

Store at -20°C. Aliquot to avoid freeze/thaw cycles.

**Precautions**

THOC6 Antibody (clone 1F6) is for research use only and not for use in diagnostic or therapeutic procedures.

**THOC6 Antibody (clone 1F6) - Protein Information****Name** THOC6**Synonyms** WDR58**Function**

Acts as a component of the THO subcomplex of the TREX complex which is thought to couple mRNA transcription, processing and nuclear export, and which specifically associates with spliced mRNA and not with unspliced pre-mRNA. TREX is recruited to spliced mRNAs by a transcription-independent mechanism, binds to mRNA upstream of the exon-junction complex (EJC) and is recruited in a splicing- and cap- dependent manner to a region near the 5' end of the mRNA where it functions in mRNA export to the cytoplasm via the TAP/NFX1 pathway. The TREX complex is essential for the export of Kaposi's sarcoma-associated herpesvirus (KSHV) intronless mRNAs and infectious virus production. Plays a role in apoptosis negative control involved in brain development.

**Cellular Location**

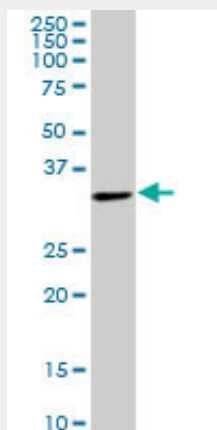
Nucleus. Nucleus speckle

## THOC6 Antibody (clone 1F6) - Protocols

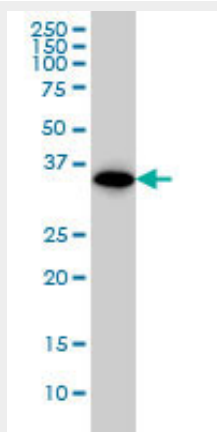
Provided below are standard protocols that you may find useful for product applications.

- [Western Blot](#)
- [Blocking Peptides](#)
- [Dot Blot](#)
- [Immunohistochemistry](#)
- [Immunofluorescence](#)
- [Immunoprecipitation](#)
- [Flow Cytometry](#)
- [Cell Culture](#)

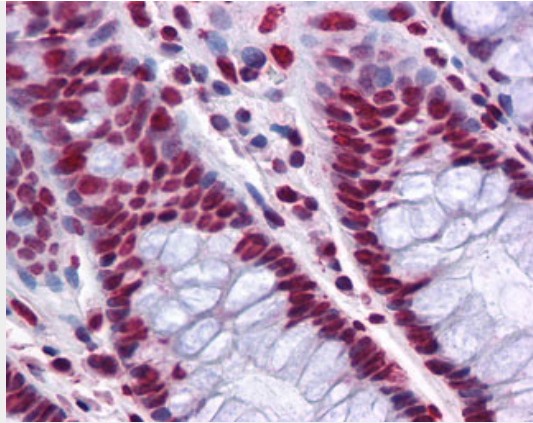
## THOC6 Antibody (clone 1F6) - Images



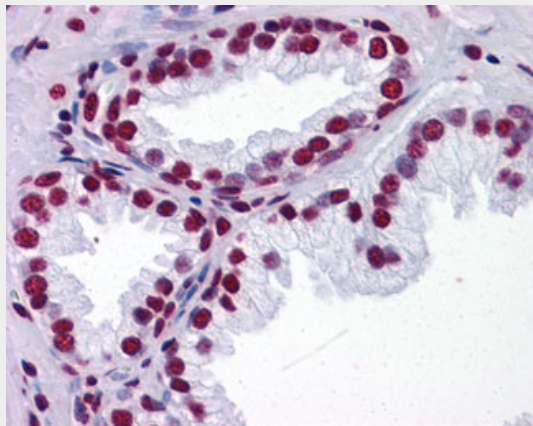
WDR58 monoclonal antibody, clone 1F6. Western blot of WDR58 expression in PC-12.



WDR58 monoclonal antibody, clone 1F6 Western blot of WDR58 expression in A-431.



Anti-THOC6 / WDR58 antibody IHC of human colon.



Anti-THOC6 / WDR58 antibody IHC of human prostate.

#### **THOC6 Antibody (clone 1F6) - Background**

Acts as component of the THO subcomplex of the TREX complex which is thought to couple mRNA transcription, processing and nuclear export, and which specifically associates with spliced mRNA and not with unspliced pre-mRNA. TREX is recruited to spliced mRNAs by a transcription-independent mechanism, binds to mRNA upstream of the exon-junction complex (EJC) and is recruited in a splicing- and cap-dependent manner to a region near the 5' end of the mRNA where it functions in mRNA export to the cytoplasm via the TAP/NFX1 pathway. The TREX complex is essential for the export of Kaposi's sarcoma-associated herpesvirus (KSHV) intronless mRNAs and infectious virus production. Plays a role in apoptosis negative control involved in brain development.

#### **THOC6 Antibody (clone 1F6) - References**

- Ota T.,et al.Nat. Genet. 36:40-45(2004).
- Guo S.,et al.Cancer Res. 65:3011-3016(2005).
- Masuda S.,et al.Genes Dev. 19:1512-1517(2005).
- Cheng H.,et al.Cell 127:1389-1400(2006).
- Boyne J.R.,et al.PLoS Pathog. 4:E1000194-E1000194(2008).