

SH3BP4 Antibody (C-Terminus)
Rabbit Polyclonal Antibody
Catalog # ALS13526**Specification**

SH3BP4 Antibody (C-Terminus) - Product Information

Application	WB, IHC
Primary Accession	Q9P0V3
Reactivity	Human, Mouse, Rat
Host	Rabbit
Clonality	Polyclonal
Calculated MW	107kDa KDa

SH3BP4 Antibody (C-Terminus) - Additional Information**Gene ID** 23677**Other Names**

SH3 domain-binding protein 4, EH-binding protein 10, Transferrin receptor-trafficking protein, SH3BP4, BOG25, EHB10, TTP

Target/Specificity

Human SH3BP4

Reconstitution & Storage

Short term 4°C, long term aliquot and store at -20°C, avoid freeze thaw cycles. Store undiluted.

Precautions

SH3BP4 Antibody (C-Terminus) is for research use only and not for use in diagnostic or therapeutic procedures.

SH3BP4 Antibody (C-Terminus) - Protein Information**Name** SH3BP4**Synonyms** BOG25, EHB10, TTP**Function**

May function in transferrin receptor internalization at the plasma membrane through a cargo-specific control of clathrin-mediated endocytosis. Alternatively, may act as a negative regulator of the amino acid-induced TOR signaling by inhibiting the formation of active Rag GTPase complexes. Preferentially binds inactive Rag GTPase complexes and prevents their interaction with the mTORC1 complex inhibiting its relocalization to lysosomes and its activation. Thereby, may indirectly regulate cell growth, proliferation and autophagy.

Cellular Location

Membrane, clathrin-coated pit. Cytoplasmic vesicle, clathrin-coated vesicle. Nucleus
Note=Specifically associated with transferrin receptor-containing clathrin-coated pits and

clathrin-coated vesicles. May also localize to the nucleus

Tissue Location

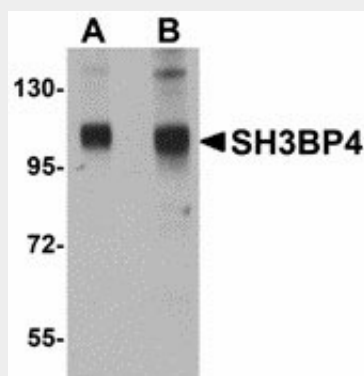
Expressed in all tissues tested with higher expression in pancreas. Expressed by retinal pigment epithelial cells (at protein level).

SH3BP4 Antibody (C-Terminus) - Protocols

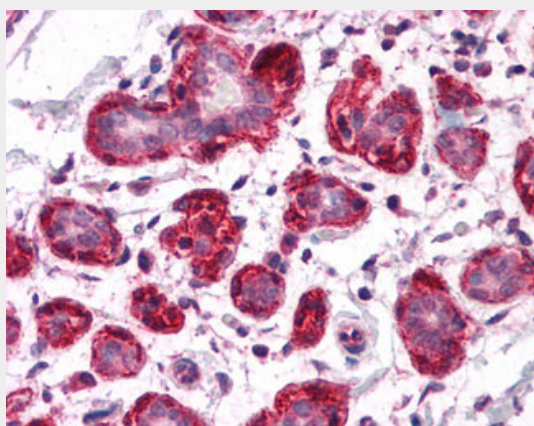
Provided below are standard protocols that you may find useful for product applications.

- [Western Blot](#)
- [Blocking Peptides](#)
- [Dot Blot](#)
- [Immunohistochemistry](#)
- [Immunofluorescence](#)
- [Immunoprecipitation](#)
- [Flow Cytometry](#)
- [Cell Culture](#)

SH3BP4 Antibody (C-Terminus) - Images



Western blot of SH3BP4 in rat lung tissue lysate with SH3BP4 antibody at (A) 1 and (B) 2 ug/ml.



Anti-SH3BP4 antibody IHC of human breast.

SH3BP4 Antibody (C-Terminus) - Background

May function in transferrin receptor internalization at the plasma membrane through a cargo-specific control of clathrin-mediated endocytosis. Alternatively, may act as a negative

regulator of the amino acid-induced TOR signaling by inhibiting the formation of active Rag GTPase complexes. Preferentially binds inactive Rag GTPase complexes and prevents their interaction with the mTORC1 complex inhibiting its relocalization to lysosomes and its activation. Thereby, may indirectly regulate cell growth, proliferation and autophagy.

SH3BP4 Antibody (C-Terminus) - References

Dunlevy J.R.,et al.Genomics 62:519-524(1999).
Tosoni D.,et al.Cell 123:875-888(2005).
Hillier L.W.,et al.Nature 434:724-731(2005).
Salcini A.E.,et al.Genes Dev. 11:2239-2249(1997).
Khanobdee K.,et al.Mol. Vis. 10:933-942(2004).