

ESX1 Antibody (Internal)
Rabbit Polyclonal Antibody
Catalog # ALS13552**Specification**

ESX1 Antibody (Internal) - Product Information

Application	IF, IHC
Primary Accession	Q8N693
Reactivity	Human
Host	Rabbit
Clonality	Polyclonal
Calculated MW	44kDa KDa

ESX1 Antibody (Internal) - Additional Information**Gene ID** 80712**Other Names**

Homeobox protein ESX1, Extraembryonic, spermatogenesis, homeobox 1, Homeobox protein ESX1-N, Homeobox protein ESX1-C, ESX1, ESX1L, ESX1R

Target/Specificity

Human ESX1

Reconstitution & Storage

Short term 4°C, long term aliquot and store at -20°C, avoid freeze thaw cycles. Store undiluted.

Precautions

ESX1 Antibody (Internal) is for research use only and not for use in diagnostic or therapeutic procedures.

ESX1 Antibody (Internal) - Protein Information**Name** ESX1**Synonyms** ESX1L, ESX1R**Function**

May coordinately regulate cell cycle progression and transcription during spermatogenesis. Inhibits degradation of polyubiquitinated cyclin A and cyclin B1 and thereby arrests the cell cycle at early M phase. ESX1-N acts as a transcriptional repressor. Binds to the sequence 5'-TAATGTTATTA-3' which is present within the first intron of the KRAS gene and inhibits its expression. ESX1-C has the ability to inhibit cyclin turnover.

Cellular Location

Cytoplasm. Nucleus {ECO:0000255|PROSITE-ProRule:PRU00108, ECO:0000269|PubMed:15235584} Note=ESX1-N localizes specifically to the nucleus while ESX1-C localizes specifically to the cytoplasm

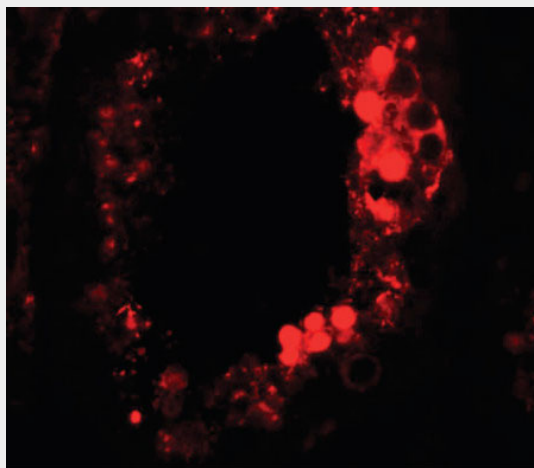
Tissue Location

Expressed in placenta and testis. Expressed in testicular germ cell tumors.

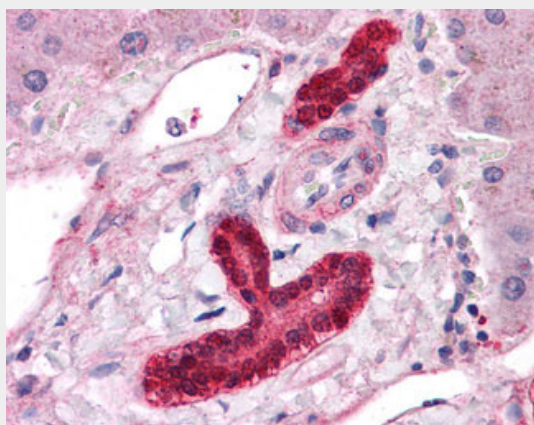
ESX1 Antibody (Internal) - Protocols

Provided below are standard protocols that you may find useful for product applications.

- [Western Blot](#)
- [Blocking Peptides](#)
- [Dot Blot](#)
- [Immunohistochemistry](#)
- [Immunofluorescence](#)
- [Immunoprecipitation](#)
- [Flow Cytometry](#)
- [Cell Culture](#)

ESX1 Antibody (Internal) - Images

Immunofluorescence of ESX1 in human testis tissue with ESX1 antibody at 20 ug/ml.



Anti-ESX1 antibody IHC of human liver.

ESX1 Antibody (Internal) - Background

May coordinately regulate cell cycle progression and transcription during spermatogenesis. Inhibits degradation of polyubiquitinated cyclin A and cyclin B1 and thereby arrests the cell cycle at

early M phase. ESXR1-N acts as a transcriptional repressor. Binds to the sequence 5'-TAATGTTATTA-3' which is present within the first intron of the KRAS gene and inhibits its expression. ESXR1-C has the ability to inhibit cyclin turnover.

ESX1 Antibody (Internal) - References

Fohn L.E.,et al.Genomics 74:105-108(2001).

Ozawa H.,et al.Oncogene 23:6590-6602(2004).

Ross M.T.,et al.Nature 434:325-337(2005).

Mural R.J.,et al.Submitted (SEP-2005) to the EMBL/GenBank/DDBJ databases.

Yanagihara M.,et al.Oncogene 24:5878-5887(2005).