

**DCLK2 / DCAMKL2 Antibody (C-Terminus)**  
**Rabbit Polyclonal Antibody**  
**Catalog # ALS13557****Specification**

---

**DCLK2 / DCAMKL2 Antibody (C-Terminus) - Product Information**

Application	WB, IHC
Primary Accession	<a href="#">Q8N568</a>
Reactivity	Human, Mouse, Rat
Host	Rabbit
Clonality	Polyclonal
Calculated MW	84kDa KDa

**DCLK2 / DCAMKL2 Antibody (C-Terminus) - Additional Information****Gene ID** 166614**Other Names**

Serine/threonine-protein kinase DCLK2, 2.7.11.1, CaMK-like CREB regulatory kinase 2, CL2, CLICK-II, CLICK2, Doublecortin domain-containing protein 3B, Doublecortin-like and CAM kinase-like 2, Doublecortin-like kinase 2, DCLK2, DCAMKL2, DCDC3B, DCK2

**Target/Specificity**

Human DCLK2

**Reconstitution & Storage**

Short term 4°C, long term aliquot and store at -20°C, avoid freeze thaw cycles. Store undiluted.

**Precautions**

DCLK2 / DCAMKL2 Antibody (C-Terminus) is for research use only and not for use in diagnostic or therapeutic procedures.

**DCLK2 / DCAMKL2 Antibody (C-Terminus) - Protein Information****Name** DCLK2**Synonyms** DCAMKL2, DCDC3B, DCK2**Function**

Protein kinase with a significantly reduced C(a2+)/CAM affinity and dependence compared to other members of the CaMK family. May play a role in the down-regulation of CRE-dependent gene activation probably by phosphorylation of the CREB coactivator CRTC2/TORC2 and the resulting retention of TORC2 in the cytoplasm (By similarity).

**Cellular Location**

Cytoplasm, cytoskeleton. Note=Colocalizes with microtubules.

**Tissue Location**

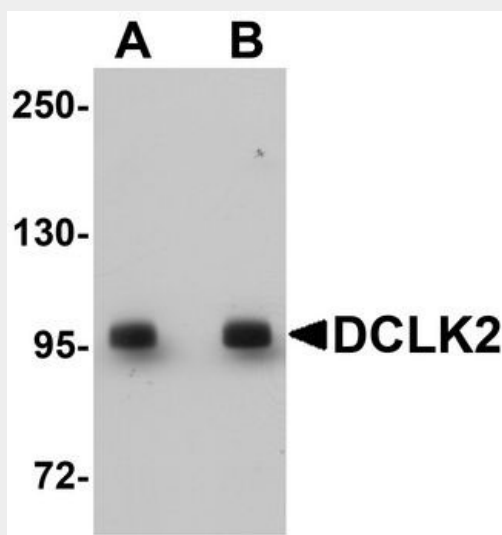
Expressed in the brain, heart and eyes.

### DCLK2 / DCAMKL2 Antibody (C-Terminus) - Protocols

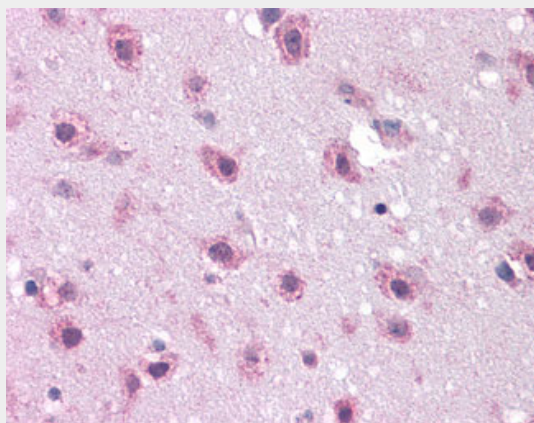
Provided below are standard protocols that you may find useful for product applications.

- [Western Blot](#)
- [Blocking Peptides](#)
- [Dot Blot](#)
- [Immunohistochemistry](#)
- [Immunofluorescence](#)
- [Immunoprecipitation](#)
- [Flow Cytometry](#)
- [Cell Culture](#)

### DCLK2 / DCAMKL2 Antibody (C-Terminus) - Images



Western blot analysis of DCLK2 in rat brain tissue lysate with DCLK2 antibody at (A) 1 and (B) 2...



Anti-DCLK2 / DCAMKL2 antibody IHC of human brain, cortex.

### DCLK2 / DCAMKL2 Antibody (C-Terminus) - Background

Protein kinase with a significantly reduced C(a2+)/CAM affinity and dependence compared to

other members of the CaMK family. May play a role in the down-regulation of CRE-dependent gene activation probably by phosphorylation of the CREB coactivator CRTC2/TORC2 and the resulting retention of TORC2 in the cytoplasm (By similarity).

#### **DCLK2 / DCAMKL2 Antibody (C-Terminus) - References**

Totoki Y.,et al.Submitted (MAR-2005) to the EMBL/GenBank/DDBJ databases.  
Hillier L.W.,et al.Nature 434:724-731(2005).  
Bechtel S.,et al.BMC Genomics 8:399-399(2007).  
Reiner O.,et al.BMC Genomics 7:188-188(2006).  
Tuy F.P.D.,et al.Dev. Neurosci. 30:171-186(2008).