

**ANAPC7 / APC7 Antibody (C-Terminus)**  
**Rabbit Polyclonal Antibody**  
**Catalog # ALS13568****Specification**

---

**ANAPC7 / APC7 Antibody (C-Terminus) - Product Information**

Application	IF, WB, IHC
Primary Accession	<a href="#">O9UJX3</a>
Reactivity	Human, Mouse, Rat
Host	Rabbit
Clonality	Polyclonal
Calculated MW	67kDa KDa

**ANAPC7 / APC7 Antibody (C-Terminus) - Additional Information****Other Names**

Anaphase-promoting complex subunit 7, APC7, Cyclosome subunit 7, ANAPC7, APC7

**Target/Specificity**

Human ANAPC7

**Reconstitution & Storage**

Short term 4°C, long term aliquot and store at -20°C, avoid freeze thaw cycles. Store undiluted.

**Precautions**

ANAPC7 / APC7 Antibody (C-Terminus) is for research use only and not for use in diagnostic or therapeutic procedures.

**ANAPC7 / APC7 Antibody (C-Terminus) - Protein Information**

**Name** ANAPC7 ([HGNC:17380](#))

**Synonyms** APC7

**Function**

Component of the anaphase promoting complex/cyclosome (APC/C), a cell cycle-regulated E3 ubiquitin ligase that controls progression through mitosis and the G1 phase of the cell cycle. The APC/C complex acts by mediating ubiquitination and subsequent degradation of target proteins: it mainly mediates the formation of 'Lys-11'-linked polyubiquitin chains and, to a lower extent, the formation of 'Lys-48'- and 'Lys-63'-linked polyubiquitin chains (PubMed:<a href="http://www.uniprot.org/citations/18485873" target="\_blank">18485873</a>). APC7 is not required for the assembly of the APC/C complex, but has an enzyme-substrate adapter activity mediating the processive ubiquitination of specific substrates (PubMed:<a href="http://www.uniprot.org/citations/34942119" target="\_blank">34942119</a>). Involved in brain development through the specific ubiquitination and clearance of MKI67 from constitutive heterochromatin after neuronal progenitors exit mitosis (PubMed:<a href="http://www.uniprot.org/citations/34942119" target="\_blank">34942119</a>).

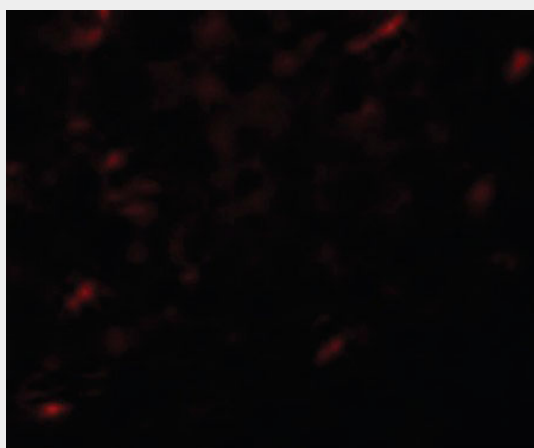
**Cellular Location**

Cytoplasm, cytoskeleton. Nucleus Cytoplasm, cytoskeleton, spindle Note=Localizes to spindle during metaphase and to cytoplasmic microtubules during interphase.

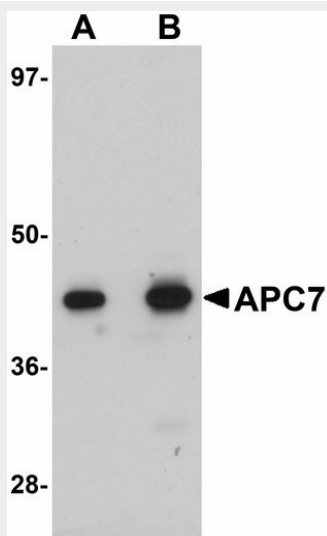
**ANAPC7 / APC7 Antibody (C-Terminus) - Protocols**

Provided below are standard protocols that you may find useful for product applications.

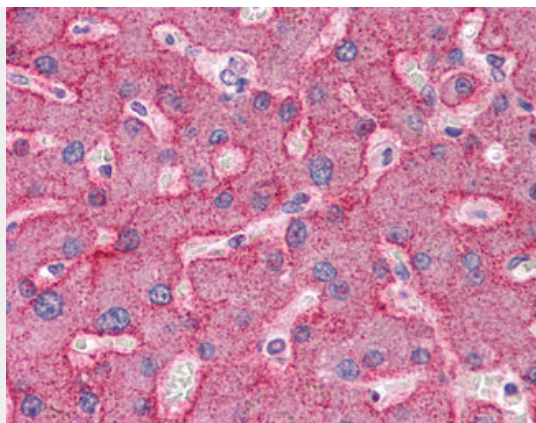
- [Western Blot](#)
- [Blocking Peptides](#)
- [Dot Blot](#)
- [Immunohistochemistry](#)
- [Immunofluorescence](#)
- [Immunoprecipitation](#)
- [Flow Cytometry](#)
- [Cell Culture](#)

**ANAPC7 / APC7 Antibody (C-Terminus) - Images**

Immunofluorescence of APC7 in rat kidney tissue with APC7 antibody at 20 ug/ml.



Western blot of APC7 in rat kidney tissue lysate with APC7 antibody at (A) 1 and (B) 2 ug/ml.



Anti-ANAPC7 / APC7 antibody IHC of human liver.

#### **ANAPC7 / APC7 Antibody (C-Terminus) - Background**

Component of the anaphase promoting complex/cyclosome (APC/C), a cell cycle-regulated E3 ubiquitin ligase that controls progression through mitosis and the G1 phase of the cell cycle. The APC/C complex acts by mediating ubiquitination and subsequent degradation of target proteins: it mainly mediates the formation of 'Lys-11'-linked polyubiquitin chains and, to a lower extent, the formation of 'Lys-48'- and 'Lys-63'-linked polyubiquitin chains.

#### **ANAPC7 / APC7 Antibody (C-Terminus) - References**

Yu H.,et al.Science 279:1219-1222(1998).  
Bechtel S.,et al.BMC Genomics 8:399-399(2007).  
Jin L.,et al.Cell 133:653-665(2008).  
Dephoure N.,et al.Proc. Natl. Acad. Sci. U.S.A. 105:10762-10767(2008).  
Choudhary C.,et al.Science 325:834-840(2009).