

**YWHAB / 14-3-3 Beta Antibody**  
**Rabbit Polyclonal Antibody**  
**Catalog # ALS13621****Specification**

---

**YWHAB / 14-3-3 Beta Antibody - Product Information**

Application	IF, WB, IHC
Primary Accession	<a href="#">P31946</a>
Reactivity	Human, Zebrafish
Host	Rabbit
Clonality	Polyclonal
Calculated MW	28kDa KDa

**YWHAB / 14-3-3 Beta Antibody - Additional Information****Gene ID** 7529**Other Names**

14-3-3 protein beta/alpha, Protein 1054, Protein kinase C inhibitor protein 1, KCIP-1, 14-3-3 protein beta/alpha, N-terminally processed, YWHAB

**Target/Specificity**

Human 14-3-3 beta. Predicted cross-reactivity based on amino acid sequence homology: mouse (84%), rat (97%), zebrafish (82%).

**Reconstitution & Storage**

Aliquot and store at -20°C. Minimize freezing and thawing.

**Precautions**

YWHAB / 14-3-3 Beta Antibody is for research use only and not for use in diagnostic or therapeutic procedures.

**YWHAB / 14-3-3 Beta Antibody - Protein Information****Name** YWHAB**Function**

Adapter protein implicated in the regulation of a large spectrum of both general and specialized signaling pathways. Binds to a large number of partners, usually by recognition of a phosphoserine or phosphothreonine motif. Binding generally results in the modulation of the activity of the binding partner. Negative regulator of osteogenesis. Blocks the nuclear translocation of the phosphorylated form (by AKT1) of SRPK2 and antagonizes its stimulatory effect on cyclin D1 expression resulting in blockage of neuronal apoptosis elicited by SRPK2. Negative regulator of signaling cascades that mediate activation of MAP kinases via AKAP13.

**Cellular Location**

Cytoplasm. Melanosome. Note=Identified by mass spectrometry in melanosome fractions from stage I to stage IV

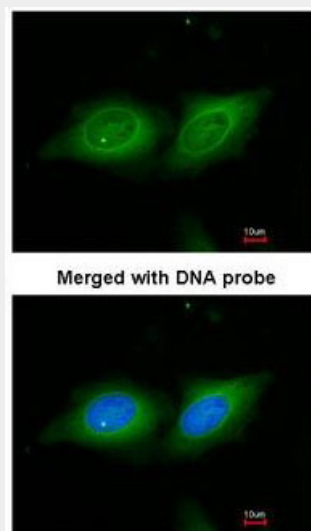
**Volume**  
50  $\mu$ l

### YWHAB / 14-3-3 Beta Antibody - Protocols

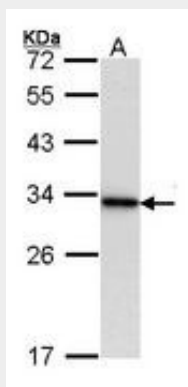
Provided below are standard protocols that you may find useful for product applications.

- [Western Blot](#)
- [Blocking Peptides](#)
- [Dot Blot](#)
- [Immunohistochemistry](#)
- [Immunofluorescence](#)
- [Immunoprecipitation](#)
- [Flow Cytometry](#)
- [Cell Culture](#)

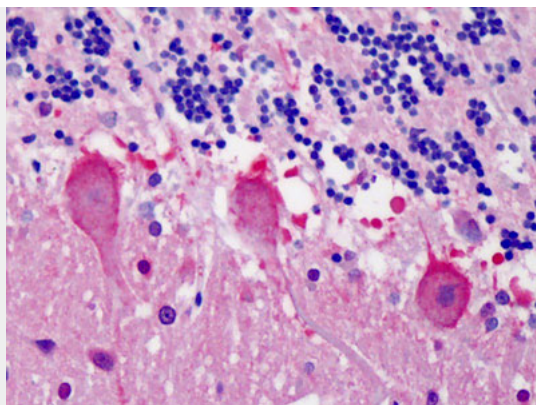
### YWHAB / 14-3-3 Beta Antibody - Images



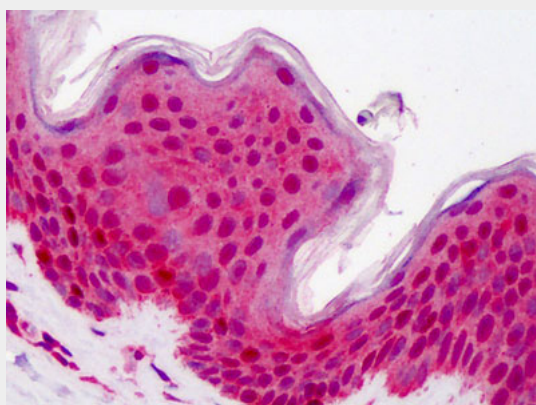
Immunofluorescence of paraformaldehyde-fixed HeLa, using 14-3-3 beta antibody at 1:200 dilution.



Sample (30 ug of whole cell lysate). A: Raji. 12% SDS PAGE. YWHAB antibody diluted at 1:10000.



Anti-14-3-3 Beta antibody IHC of human cerebellum.



Anti-14-3-3 Beta antibody IHC of human skin.

#### **YWHAB / 14-3-3 Beta Antibody - Background**

Adapter protein implicated in the regulation of a large spectrum of both general and specialized signaling pathways. Binds to a large number of partners, usually by recognition of a phosphoserine or phosphothreonine motif. Binding generally results in the modulation of the activity of the binding partner. Negative regulator of osteogenesis. Blocks the nuclear translocation of the phosphorylated form (by AKT1) of SRPK2 and antagonizes its stimulatory effect on cyclin D1 expression resulting in blockage of neuronal apoptosis elicited by SRPK2.

#### **YWHAB / 14-3-3 Beta Antibody - References**

- Leffers H.,et al.J. Mol. Biol. 231:982-998(1993).
- Ota T.,et al.Nat. Genet. 36:40-45(2004).
- Deloukas P.,et al.Nature 414:865-871(2001).
- Mural R.J.,et al.Submitted (SEP-2005) to the EMBL/GenBank/DDBJ databases.
- Bienvenut W.V.,et al.Submitted (DEC-2008) to UniProtKB.