

**GC / Vitamin D-Binding Protein Antibody**  
**Rabbit Polyclonal Antibody**  
**Catalog # ALS13630****Specification**

---

**GC / Vitamin D-Binding Protein Antibody - Product Information**

Application	IHC
Primary Accession	<a href="#">P02774</a>
Reactivity	Human
Host	Rabbit
Clonality	Polyclonal
Calculated MW	53kDa KDa

**GC / Vitamin D-Binding Protein Antibody - Additional Information****Gene ID** 2638**Other Names**

Vitamin D-binding protein, DBP, VDB, Gc-globulin, Group-specific component, GC

**Target/Specificity**

Recognizes Vitamin D binding protein (VDBP), the major carrier protein of vitamin D that also transports components such as fatty acids and endotoxins and has an important role in the actin scavenging system. VDBP is a 52-58 kD plasma protein syntheses ...

**Reconstitution & Storage**

+4°C or -20°C, Avoid repeated freezing and thawing.

**Precautions**

GC / Vitamin D-Binding Protein Antibody is for research use only and not for use in diagnostic or therapeutic procedures.

**GC / Vitamin D-Binding Protein Antibody - Protein Information****Name** GC**Function**

Involved in vitamin D transport and storage, scavenging of extracellular G-actin, enhancement of the chemotactic activity of C5 alpha for neutrophils in inflammation and macrophage activation.

**Cellular Location**

Secreted.

**Tissue Location**

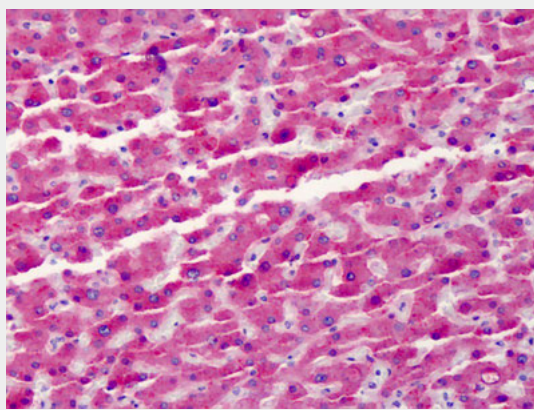
Expressed in the liver. Found in plasma, ascites, cerebrospinal fluid and urine.

## **GC / Vitamin D-Binding Protein Antibody - Protocols**

Provided below are standard protocols that you may find useful for product applications.

- [Western Blot](#)
- [Blocking Peptides](#)
- [Dot Blot](#)
- [Immunohistochemistry](#)
- [Immunofluorescence](#)
- [Immunoprecipitation](#)
- [Flow Cytometry](#)
- [Cell Culture](#)

## **GC / Vitamin D-Binding Protein Antibody - Images**



Anti-GC / VDBP antibody IHC of human liver.

## **GC / Vitamin D-Binding Protein Antibody - Background**

Multifunctional protein found in plasma, ascitic fluid, cerebrospinal fluid, and urine and on the surface of many cell types. In plasma, it carries the vitamin D sterols and prevents polymerization of actin by binding its monomers. DBP associates with membrane-bound immunoglobulin on the surface of B-lymphocytes and with IgG Fc receptor on the membranes of T-lymphocytes.

## **GC / Vitamin D-Binding Protein Antibody - References**

Cooke N.E., et al. J. Clin. Invest. 76:2420-2424(1985).  
Yang F., et al. Proc. Natl. Acad. Sci. U.S.A. 82:7994-7998(1985).  
Braun A., et al. Biochim. Biophys. Acta 1216:385-394(1993).  
Witke W.F., et al. Genomics 16:751-754(1993).  
Ota T., et al. Nat. Genet. 36:40-45(2004).