

FOXN1 Antibody
Rabbit Polyclonal Antibody
Catalog # ALS13641**Specification**

FOXN1 Antibody - Product Information

| | |
|-------------------|------------------------|
| Application | WB, IHC |
| Primary Accession | O15353 |
| Reactivity | Human |
| Host | Rabbit |
| Clonality | Polyclonal |
| Calculated MW | 69kDa KDa |

FOXN1 Antibody - Additional Information**Gene ID** 8456**Other Names**

Forkhead box protein N1, Winged-helix transcription factor nude, FOXN1, RONU, WHN

Target/Specificity

Human Forkhead box N1.

Reconstitution & Storage

Aliquot and store at -20°C. Minimize freezing and thawing.

Precautions

FOXN1 Antibody is for research use only and not for use in diagnostic or therapeutic procedures.

FOXN1 Antibody - Protein Information**Name** FOXN1**Synonyms** RONU, WHN**Function**

Transcriptional regulator which regulates the development, differentiation, and function of thymic epithelial cells (TECs) both in the prenatal and postnatal thymus. Acts as a master regulator of the TECs lineage development and is required from the onset of differentiation in progenitor TECs in the developing fetus to the final differentiation steps through which TECs mature to acquire their full functionality. Regulates, either directly or indirectly the expression of a variety of genes that mediate diverse aspects of thymus development and function, including MHC Class II, DLL4, CCL25, CTSL, CD40 and PAX1. Regulates the differentiation of the immature TECs into functional cortical TECs (cTECs) and medullary TECs (mTECs). Essential for maintenance of mTECs population in the postnatal thymus. Involved in the morphogenesis and maintenance of the three-dimensional thymic microstructure which is necessary for a fully functional thymus. Plays an important role in the maintenance of hematopoiesis and particularly T lineage progenitors within the bone marrow niche with age. Essential for the vascularization of the thymus anlage. Promotes the terminal

differentiation of epithelial cells in the epidermis and hair follicles, partly by negatively regulating the activity of protein kinase C (By similarity). Plays a crucial role in the early prenatal stages of T-cell ontogeny (PubMed:21507891).

Cellular Location

Nucleus.

Tissue Location

Expressed in thymus.

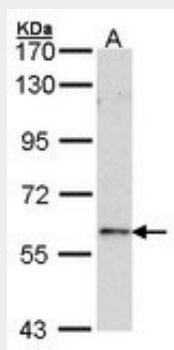
Volume

50 µl

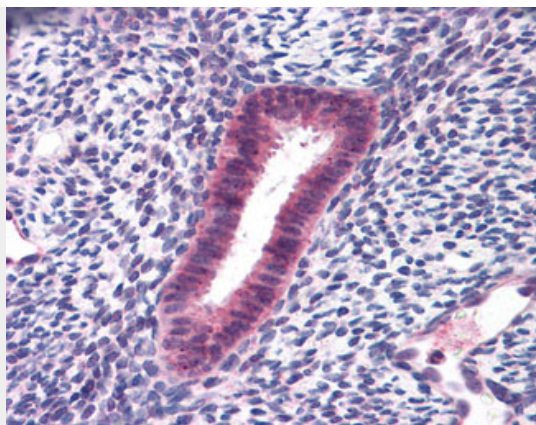
FOXN1 Antibody - Protocols

Provided below are standard protocols that you may find useful for product applications.

- [Western Blot](#)
- [Blocking Peptides](#)
- [Dot Blot](#)
- [Immunohistochemistry](#)
- [Immunofluorescence](#)
- [Immunoprecipitation](#)
- [Flow Cytometry](#)
- [Cell Culture](#)

FOXN1 Antibody - Images

Sample (30 ug of whole cell lysate). A: Raji. 7.5% SDS PAGE. FOXN1 antibody diluted at 1:1000.



Anti-FOXN1 antibody IHC of human uterus.

FOXN1 Antibody - Background

Transcriptional regulator involved in development.

FOXN1 Antibody - References

Schorpp M.,et al.Immunogenetics 46:509-515(1997).

Ota T.,et al.Nat. Genet. 36:40-45(2004).

Mural R.J.,et al.Submitted (JUL-2005) to the EMBL/GenBank/DDBJ databases.

Frank J.,et al.Nature 398:473-474(1999).