

CRP / C-Reactive Protein Antibody
Mouse Monoclonal Antibody
Catalog # ALS13709**Specification**

CRP / C-Reactive Protein Antibody - Product Information

Application	IHC
Primary Accession	P02741
Reactivity	Human
Host	Mouse
Clonality	Monoclonal
Calculated MW	25kDa KDa

CRP / C-Reactive Protein Antibody - Additional Information**Gene ID** 1401**Other Names**

C-reactive protein, C-reactive protein(1-205), CRP, PTX1

Target/SpecificityRecognizes the human CRP antigen both in the presence and in the absence (samples containing EDTA) of Ca²⁺.**Reconstitution & Storage**

Short term 4°C, long term aliquot and store at -20°C, avoid freeze thaw cycles.

Precautions

CRP / C-Reactive Protein Antibody is for research use only and not for use in diagnostic or therapeutic procedures.

CRP / C-Reactive Protein Antibody - Protein Information**Name** CRP**Synonyms** PTX1**Function**

Displays several functions associated with host defense: it promotes agglutination, bacterial capsular swelling, phagocytosis and complement fixation through its calcium-dependent binding to phosphorylcholine. Can interact with DNA and histones and may scavenge nuclear material released from damaged circulating cells.

Cellular Location

Secreted.

Tissue Location

Found in plasma.

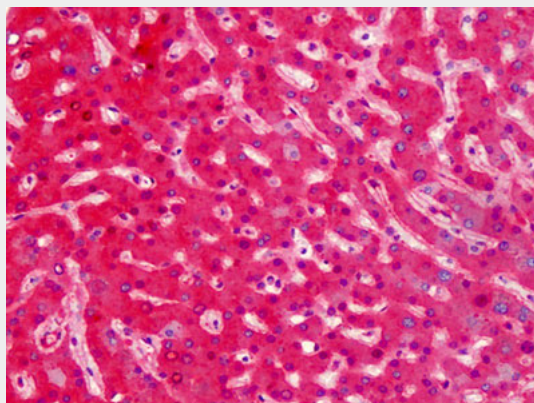
Volume
50 µl

CRP / C-Reactive Protein Antibody - Protocols

Provided below are standard protocols that you may find useful for product applications.

- [Western Blot](#)
- [Blocking Peptides](#)
- [Dot Blot](#)
- [Immunohistochemistry](#)
- [Immunofluorescence](#)
- [Immunoprecipitation](#)
- [Flow Cytometry](#)
- [Cell Culture](#)

CRP / C-Reactive Protein Antibody - Images



Anti-CRP / C-Reactive Protein antibody IHC of human liver.

CRP / C-Reactive Protein Antibody - Background

Displays several functions associated with host defense: it promotes agglutination, bacterial capsular swelling, phagocytosis and complement fixation through its calcium-dependent binding to phosphorylcholine. Can interact with DNA and histones and may scavenge nuclear material released from damaged circulating cells.

CRP / C-Reactive Protein Antibody - References

Lei K.-J., et al. J. Biol. Chem. 260:13377-13383(1985).
Woo P., et al. J. Biol. Chem. 260:13384-13388(1985).
Murphy T.M., et al. Submitted (NOV-1990) to the EMBL/GenBank/DDBJ databases.
Tenchini M.L., et al. Submitted (MAY-1992) to the EMBL/GenBank/DDBJ databases.
Harraghy N., et al. Submitted (DEC-2001) to the EMBL/GenBank/DDBJ databases.