

**KITLG / SCF Antibody (Internal)**  
**Rabbit Polyclonal Antibody**  
**Catalog # ALS13746****Specification**

---

**KITLG / SCF Antibody (Internal) - Product Information**

|                   |                        |
|-------------------|------------------------|
| Application       | IF, WB, IHC            |
| Primary Accession | <a href="#">P21583</a> |
| Reactivity        | Human, Mouse, Rat      |
| Host              | Rabbit                 |
| Clonality         | Polyclonal             |
| Calculated MW     | 31kDa KDa              |

**KITLG / SCF Antibody (Internal) - Additional Information****Gene ID** 4254**Other Names**

Kit ligand, Mast cell growth factor, MGF, Stem cell factor, SCF, c-Kit ligand, Soluble KIT ligand, sKITLG, KITLG, MGF, SCF

**Target/Specificity**

Human KITLG

**Reconstitution & Storage**

Short term 4°C, long term aliquot and store at -20°C, avoid freeze thaw cycles. Store undiluted.

**Precautions**

KITLG / SCF Antibody (Internal) is for research use only and not for use in diagnostic or therapeutic procedures.

**KITLG / SCF Antibody (Internal) - Protein Information****Name** KITLG ([HGNC:6343](#))**Synonyms** MGF, SCF**Function**

Ligand for the receptor-type protein-tyrosine kinase KIT. Plays an essential role in the regulation of cell survival and proliferation, hematopoiesis, stem cell maintenance, gametogenesis, mast cell development, migration and function, and in melanogenesis. KITLG/SCF binding can activate several signaling pathways. Promotes phosphorylation of PIK3R1, the regulatory subunit of phosphatidylinositol 3-kinase, and subsequent activation of the kinase AKT1. KITLG/SCF and KIT also transmit signals via GRB2 and activation of RAS, RAF1 and the MAP kinases MAPK1/ERK2 and/or MAPK3/ERK1. KITLG/SCF and KIT promote activation of STAT family members STAT1, STAT3 and STAT5. KITLG/SCF and KIT promote activation of PLCG1, leading to the production of the cellular signaling molecules diacylglycerol and inositol 1,4,5-trisphosphate. KITLG/SCF acts synergistically with other cytokines, probably interleukins.

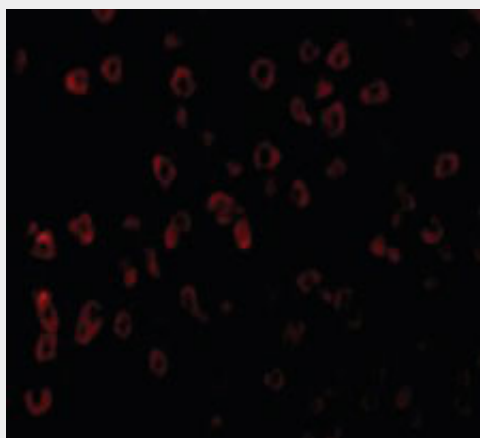
**Cellular Location**

[Isoform 1]: Cell membrane; Single-pass type I membrane protein [Soluble KIT ligand]: Secreted.

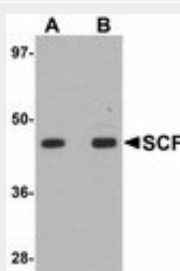
**KITLG / SCF Antibody (Internal) - Protocols**

Provided below are standard protocols that you may find useful for product applications.

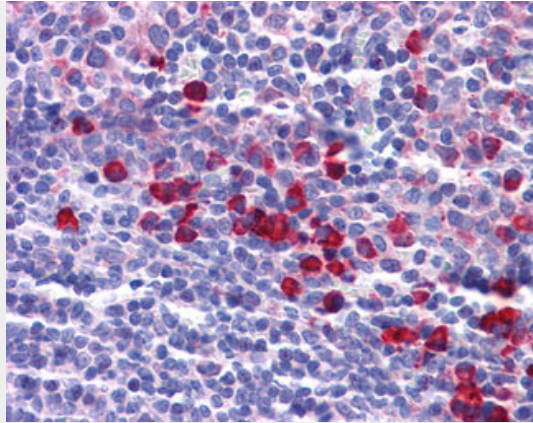
- [Western Blot](#)
- [Blocking Peptides](#)
- [Dot Blot](#)
- [Immunohistochemistry](#)
- [Immunofluorescence](#)
- [Immunoprecipitation](#)
- [Flow Cytometry](#)
- [Cell Culture](#)

**KITLG / SCF Antibody (Internal) - Images**

Immunofluorescence of SCF in Human Brain cells with SCF antibody at 20 ug/ml.



Western blot of SCF in rat brain tissue lysate with SCF antibody at (A) 1 and (B) 2 ug/ml.



Anti-KITLG / SCF antibody IHC of human tonsil.

#### **KITLG / SCF Antibody (Internal) - Background**

Ligand for the receptor-type protein-tyrosine kinase KIT. Plays an essential role in the regulation of cell survival and proliferation, hematopoiesis, stem cell maintenance, gametogenesis, mast cell development, migration and function, and in melanogenesis. KITLG/SCF binding can activate several signaling pathways. Promotes phosphorylation of PIK3R1, the regulatory subunit of phosphatidylinositol 3-kinase, and subsequent activation of the kinase AKT1. KITLG/SCF and KIT also transmit signals via GRB2 and activation of RAS, RAF1 and the MAP kinases MAPK1/ERK2 and/or MAPK3/ERK1. KITLG/SCF and KIT promote activation of STAT family members STAT1, STAT3 and STAT5. KITLG/SCF and KIT promote activation of PLCG1, leading to the production of the cellular signaling molecules diacylglycerol and inositol 1,4,5- trisphosphate. KITLG/SCF acts synergistically with other cytokines, probably interleukins.

#### **KITLG / SCF Antibody (Internal) - References**

Martin F.H.,et al.Cell 63:203-211(1990).  
Anderson D.M.,et al.Cell Growth Differ. 2:373-378(1991).  
Blair H.C.,et al.Biochem. Biophys. Res. Commun. 255:778-784(1999).  
Han C.,et al.Submitted (JUL-2001) to the EMBL/GenBank/DDBJ databases.  
Ota T.,et al.Nat. Genet. 36:40-45(2004).