

**SLC37A2 Antibody (Internal)**  
**Rabbit Polyclonal Antibody**  
**Catalog # ALS13816****Specification**

---

**SLC37A2 Antibody (Internal) - Product Information**

Application	IF, WB, IHC
Primary Accession	<a href="#">Q8TED4</a>
Reactivity	Human, Mouse, Rat
Host	Rabbit
Clonality	Polyclonal
Calculated MW	54kDa KDa

**SLC37A2 Antibody (Internal) - Additional Information****Gene ID** 219855**Other Names**

Sugar phosphate exchanger 2, Solute carrier family 37 member 2, SLC37A2, SPX2

**Target/Specificity**

Human SLC37A2

**Reconstitution & Storage**

Short term 4°C, long term aliquot and store at -20°C, avoid freeze thaw cycles. Store undiluted.

**Precautions**

SLC37A2 Antibody (Internal) is for research use only and not for use in diagnostic or therapeutic procedures.

**SLC37A2 Antibody (Internal) - Protein Information****Name** SLC37A2 ([HGNC:20644](#))**Function**

Inorganic phosphate and glucose-6-phosphate antiporter. May transport cytoplasmic glucose-6-phosphate into the lumen of the endoplasmic reticulum and translocate inorganic phosphate into the opposite direction. Independent of a luminal glucose-6-phosphatase. May not play a role in homeostatic regulation of blood glucose levels.

**Cellular Location**

Endoplasmic reticulum membrane; Multi-pass membrane protein

**Tissue Location**

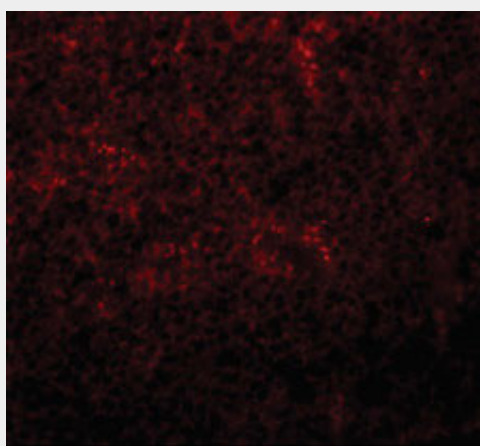
Detected in intestine and pancreas. Lower expression is also detected in liver and kidney

## SLC37A2 Antibody (Internal) - Protocols

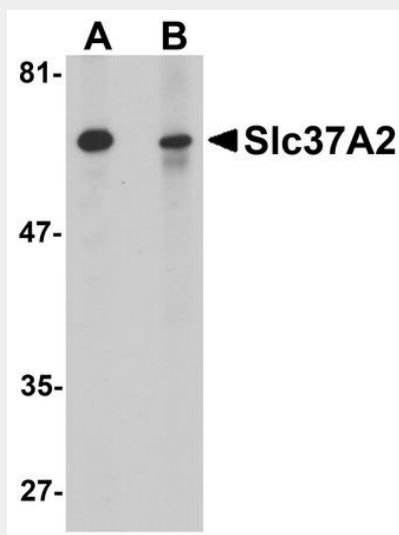
Provided below are standard protocols that you may find useful for product applications.

- [Western Blot](#)
- [Blocking Peptides](#)
- [Dot Blot](#)
- [Immunohistochemistry](#)
- [Immunofluorescence](#)
- [Immunoprecipitation](#)
- [Flow Cytometry](#)
- [Cell Culture](#)

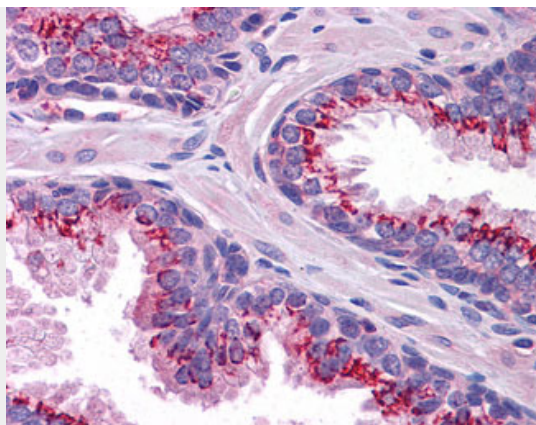
## SLC37A2 Antibody (Internal) - Images



Immunofluorescence of Slc37A2 in rat spleen tissue with Slc37A2 antibody at 20 ug/ml.



Western blot analysis of Slc37A2 in mouse spleen tissue lysate with Slc37A2 antibody at 1 ug/ml...



Anti-SLC37A2 antibody IHC of human prostate.

#### **SLC37A2 Antibody (Internal) - References**

Jikuya H.,et al.DNA Res. 10:49-57(2003).

Ota T.,et al.Nat. Genet. 36:40-45(2004).

Mural R.J.,et al.Submitted (JUL-2005) to the EMBL/GenBank/DDBJ databases.