

TINF2 Antibody (aa341-354)
Goat Polyclonal Antibody
Catalog # ALS13851**Specification**

TINF2 Antibody (aa341-354) - Product Information

Application	IHC
Primary Accession	Q9BSI4
Reactivity	Human, Monkey
Host	Goat
Clonality	Polyclonal
Calculated MW	50kDa KDa

TINF2 Antibody (aa341-354) - Additional Information**Gene ID** 26277**Other Names**

TERF1-interacting nuclear factor 2, TRF1-interacting nuclear protein 2, TINF2, TIN2

Target/Specificity

Human TINF2.

Reconstitution & Storage

Store at -20°C. Minimize freezing and thawing.

Precautions

TINF2 Antibody (aa341-354) is for research use only and not for use in diagnostic or therapeutic procedures.

TINF2 Antibody (aa341-354) - Protein Information**Name** TINF2**Synonyms** TIN2**Function**

Component of the shelterin complex (telosome) that is involved in the regulation of telomere length and protection. Shelterin associates with arrays of double-stranded TTAGGG repeats added by telomerase and protects chromosome ends; without its protective activity, telomeres are no longer hidden from the DNA damage surveillance and chromosome ends are inappropriately processed by DNA repair pathways. Plays a role in shelterin complex assembly. Isoform 1 may have additional role in tethering telomeres to the nuclear matrix.

Cellular Location

Nucleus. Chromosome, telomere. Note=Associated with telomeres

Tissue Location

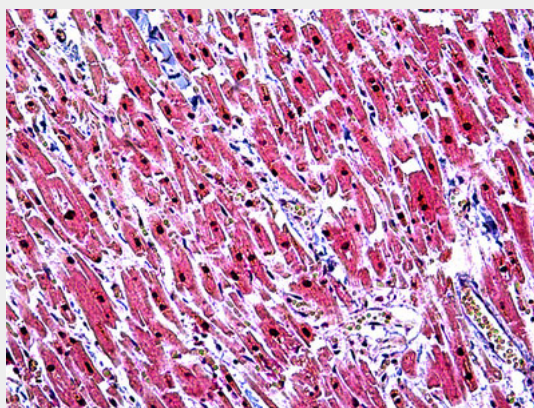
Detected in heart, brain, placenta, lung, liver, skeletal muscle, kidney and pancreas

TINF2 Antibody (aa341-354) - Protocols

Provided below are standard protocols that you may find useful for product applications.

- [Western Blot](#)
- [Blocking Peptides](#)
- [Dot Blot](#)
- [Immunohistochemistry](#)
- [Immunofluorescence](#)
- [Immunoprecipitation](#)
- [Flow Cytometry](#)
- [Cell Culture](#)

TINF2 Antibody (aa341-354) - Images



Anti-TINF2 antibody IHC of human heart.

TINF2 Antibody (aa341-354) - Background

Component of the shelterin complex (telosome) that is involved in the regulation of telomere length and protection. Shelterin associates with arrays of double-stranded TTAGGG repeats added by telomerase and protects chromosome ends; without its protective activity, telomeres are no longer hidden from the DNA damage surveillance and chromosome ends are inappropriately processed by DNA repair pathways. Plays a role in shelterin complex assembly. Isoform 1 may have additional role in tethering telomeres to the nuclear matrix.

TINF2 Antibody (aa341-354) - References

- Kim S.-H., et al. Nat. Genet. 23:405-412(1999).
Ota T., et al. Nat. Genet. 36:40-45(2004).
Kaminker P.G., et al. Submitted (JUN-2008) to the EMBL/GenBank/DDBJ databases.
Loayza D., et al. Nature 423:1013-1018(2003).
Ye J.Z.-S., et al. Genes Dev. 18:1649-1654(2004).