

**HEP / EPHB6 Antibody (aa831-843)**  
**Goat Polyclonal Antibody**  
**Catalog # ALS13859****Specification**

---

**HEP / EPHB6 Antibody (aa831-843) - Product Information**

Application	IHC
Primary Accession	<a href="#">O15197</a>
Reactivity	Human, Dog
Host	Goat
Clonality	Polyclonal
Calculated MW	111kDa KDa

**HEP / EPHB6 Antibody (aa831-843) - Additional Information****Gene ID** 2051**Other Names**

Ephrin type-B receptor 6, HEP, Tyrosine-protein kinase-defective receptor EPH-6, EPHB6

**Target/Specificity**

Human EPHB6.

**Reconstitution & Storage**

Store at -20°C. Minimize freezing and thawing.

**Precautions**

HEP / EPHB6 Antibody (aa831-843) is for research use only and not for use in diagnostic or therapeutic procedures.

**HEP / EPHB6 Antibody (aa831-843) - Protein Information****Name** EPHB6**Function**

Kinase-defective receptor for members of the ephrin-B family. Binds to ephrin-B1 and ephrin-B2. Modulates cell adhesion and migration by exerting both positive and negative effects upon stimulation with ephrin-B2. Inhibits JNK activation, T-cell receptor-induced IL-2 secretion and CD25 expression upon stimulation with ephrin-B2.

**Cellular Location**

Membrane; Single-pass type I membrane protein.

**Tissue Location**

Expressed in brain. Expressed in non invasive breast carcinoma cell lines (at protein level). Strong expression in brain and pancreas, and weak expression in other tissues, such as heart, placenta, lung, liver, skeletal muscle and kidney. Expressed in breast non invasive tumors but not in metastatic lesions. Isoform 3 is expressed in cell lines of glioblastomas, anaplastic astrocytomas,

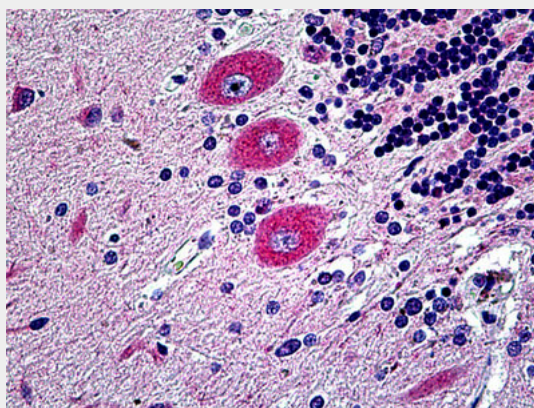
gliosarcomas and astrocytomas. Isoform 3 is not detected in normal tissues.

### HEP / EPHB6 Antibody (aa831-843) - Protocols

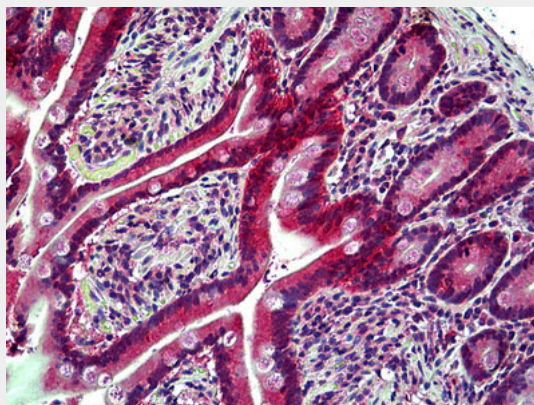
Provided below are standard protocols that you may find useful for product applications.

- [Western Blot](#)
- [Blocking Peptides](#)
- [Dot Blot](#)
- [Immunohistochemistry](#)
- [Immunofluorescence](#)
- [Immunoprecipitation](#)
- [Flow Cytometry](#)
- [Cell Culture](#)

### HEP / EPHB6 Antibody (aa831-843) - Images



Anti-EPHB6 antibody IHC of human brain, cerebellum.



Anti-EPHB6 antibody IHC of human small intestine.

### HEP / EPHB6 Antibody (aa831-843) - Background

Kinase-defective receptor for members of the ephrin-B family. Binds to ephrin-B1 and ephrin-B2. Modulates cell adhesion and migration by exerting both positive and negative effects upon stimulation with ephrin-B2. Inhibits JNK activation, T-cell receptor-induced IL-2 secretion and CD25 expression upon stimulation with ephrin-B2.

**HEP / EPHB6 Antibody (aa831-843) - References**

Matsuoka H.,et al.Biochem. Biophys. Res. Commun. 235:487-492(1997).  
Hillier L.W.,et al.Nature 424:157-164(2003).  
Scherer S.W.,et al.Science 300:767-772(2003).  
Mural R.J.,et al.Submitted (SEP-2005) to the EMBL/GenBank/DDBJ databases.  
Jin M.,et al.Oncol. Rep. 19:1277-1283(2008).