

**CLCN2 Antibody (aa738-751)**  
**Goat Polyclonal Antibody**  
**Catalog # ALS13866****Specification**

---

**CLCN2 Antibody (aa738-751) - Product Information**

Application	IHC
Primary Accession	<a href="#">P51788</a>
Reactivity	Human
Host	Goat
Clonality	Polyclonal
Calculated MW	99kDa KDa

**CLCN2 Antibody (aa738-751) - Additional Information****Gene ID** 1181**Other Names**

Chloride channel protein 2, CIC-2, CLCN2

**Target/Specificity**

Human CLCN2. This antibody is expected to recognize all reported isoforms (NP\_004357.3; NP\_001164558.1; NP\_001164559.1; NP\_001164560.1).

**Reconstitution & Storage**

Store at -20°C. Minimize freezing and thawing.

**Precautions**

CLCN2 Antibody (aa738-751) is for research use only and not for use in diagnostic or therapeutic procedures.

**CLCN2 Antibody (aa738-751) - Protein Information****Name** CLCN2**Function**

Voltage-gated chloride channel. Chloride channels have several functions including the regulation of cell volume, membrane potential stabilization, signal transduction and transepithelial transport. Involved in the regulation of aldosterone production. The opening of CLCN2 channels at hyperpolarized membrane potentials in the glomerulosa causes cell membrane depolarization, activation of voltage-gated Ca<sup>2+</sup> channels and increased expression of aldosterone synthase, the rate-limiting enzyme for aldosterone biosynthesis (PubMed:<a href="http://www.uniprot.org/citations/29403011" target="\_blank">29403011</a>, PubMed:<a href="http://www.uniprot.org/citations/29403012" target="\_blank">29403012</a>).

**Cellular Location**

Cell membrane; Multi-pass membrane protein

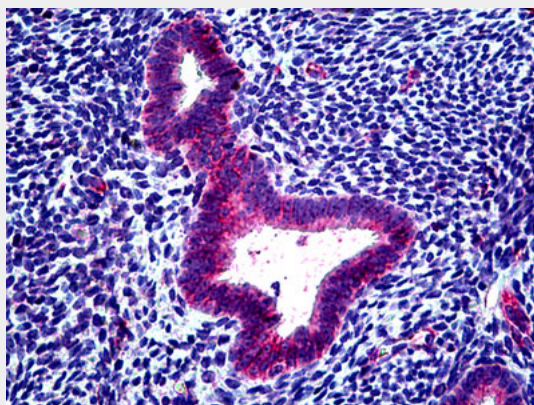
**Tissue Location**

Ubiquitously expressed. Moderately expressed in aortic and coronary vascular smooth muscle cells and expressed at a low level in aortic endothelial cells. Expressed in the adrenal gland, predominantly in the zona glomerulosa (PubMed:29403011)

**CLCN2 Antibody (aa738-751) - Protocols**

Provided below are standard protocols that you may find useful for product applications.

- [Western Blot](#)
- [Blocking Peptides](#)
- [Dot Blot](#)
- [Immunohistochemistry](#)
- [Immunofluorescence](#)
- [Immunoprecipitation](#)
- [Flow Cytometry](#)
- [Cell Culture](#)

**CLCN2 Antibody (aa738-751) - Images**

Anti-CLCN2 antibody IHC of human uterus.

**CLCN2 Antibody (aa738-751) - Background**

Voltage-gated chloride channel. Chloride channels have several functions including the regulation of cell volume; membrane potential stabilization, signal transduction and transepithelial transport.

**CLCN2 Antibody (aa738-751) - References**

- Cid L.P.,et al.Hum. Mol. Genet. 4:407-413(1995).  
Rae J.L.,et al.Submitted (SEP-1997) to the EMBL/GenBank/DDBJ databases.  
Ota T.,et al.Nat. Genet. 36:40-45(2004).  
Muzny D.M.,et al.Nature 440:1194-1198(2006).  
Lamb F.S.,et al.J. Mol. Cell. Cardiol. 31:657-666(1999).