

Dysferlin Antibody (C-Terminus)
Rabbit Polyclonal Antibody
Catalog # ALS13912**Specification**

Dysferlin Antibody (C-Terminus) - Product Information

Application	IHC
Primary Accession	O75923
Reactivity	Human
Host	Rabbit
Clonality	Polyclonal
Calculated MW	237kDa KDa

Dysferlin Antibody (C-Terminus) - Additional Information**Gene ID** 8291**Other Names**

Dysferlin, Dystrophy-associated fer-1-like protein, Fer-1-like protein 1, DYSF, FER1L1

Reconstitution & Storage

Store at 2°C to 8°C degrees. Do not freeze.

Precautions

Dysferlin Antibody (C-Terminus) is for research use only and not for use in diagnostic or therapeutic procedures.

Dysferlin Antibody (C-Terminus) - Protein Information**Name** DYSF**Synonyms** FER1L1**Function**

Key calcium ion sensor involved in the Ca(2+)-triggered synaptic vesicle-plasma membrane fusion. Plays a role in the sarcolemma repair mechanism of both skeletal muscle and cardiomyocytes that permits rapid resealing of membranes disrupted by mechanical stress (By similarity).

Cellular Location

Cell membrane, sarcolemma; Single-pass type II membrane protein. Cytoplasmic vesicle membrane; Single-pass type II membrane protein. Cell membrane Note=Colocalizes, during muscle differentiation, with BIN1 in the T-tubule system of myotubules and at the site of contact between two myotubes or a myoblast and a myotube. Wounding of myotubes led to its focal enrichment to the site of injury and to its relocalization in a Ca(2+)-dependent manner toward the plasma membrane. Colocalizes with AHNK, AHNK2 and PARVB at the sarcolemma of skeletal muscle. Detected on the apical plasma membrane of the syncytiotrophoblast. Reaches the plasma membrane through a caveolin-independent mechanism. Retained by caveolin at the

plasma membrane (By similarity). Colocalizes, during muscle differentiation, with CACNA1S in the T-tubule system of myotubules (By similarity). Accumulates and colocalizes with fusion vesicles at the sarcolemma disruption sites (By similarity)

Tissue Location

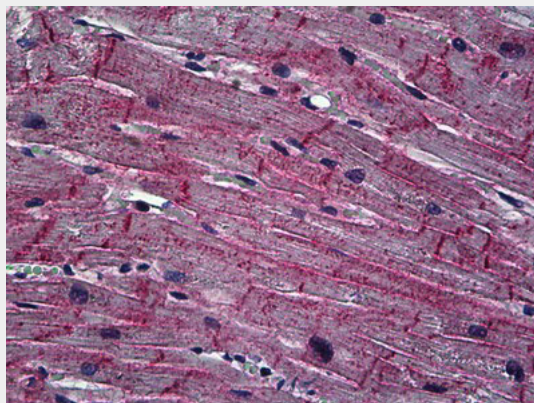
Expressed in skeletal muscle, myoblast, myotube and in the syncytiotrophoblast (STB) of the placenta (at protein level) Ubiquitous. Highly expressed in skeletal muscle. Also found in heart, brain, spleen, intestine, placenta and at lower levels in liver, lung, kidney and pancreas.

Dysferlin Antibody (C-Terminus) - Protocols

Provided below are standard protocols that you may find useful for product applications.

- [Western Blot](#)
- [Blocking Peptides](#)
- [Dot Blot](#)
- [Immunohistochemistry](#)
- [Immunofluorescence](#)
- [Immunoprecipitation](#)
- [Flow Cytometry](#)
- [Cell Culture](#)

Dysferlin Antibody (C-Terminus) - Images



Anti-DYSF / Dysferlin antibody IHC of human heart.

Dysferlin Antibody (C-Terminus) - Background

Key calcium ion sensor involved in the Ca^{2+} -triggered synaptic vesicle-plasma membrane fusion. Plays a role in the sarcolemma repair mechanism of both skeletal muscle and cardiomyocytes that permits rapid resealing of membranes disrupted by mechanical stress (By similarity).

Dysferlin Antibody (C-Terminus) - References

Liu J., et al. Nat. Genet. 20:31-36(1998).
Pramono Z.A.D., et al. Hum. Genet. 120:410-419(2006).
Pramono Z.A., et al. Hum. Genet. 125:413-420(2009).
Hillier L.W., et al. Nature 434:724-731(2005).
Mural R.J., et al. Submitted (SEP-2005) to the EMBL/GenBank/DDBJ databases.