

**IL16 Antibody (clone G11/II)**  
**Mouse Monoclonal Antibody**  
**Catalog # ALS13931****Specification**

---

**IL16 Antibody (clone G11/II) - Product Information**

Application	IHC
Primary Accession	<a href="#">Q14005</a>
Reactivity	Human
Host	Mouse
Clonality	Monoclonal
Calculated MW	142kDa KDa

**IL16 Antibody (clone G11/II) - Additional Information****Gene ID** 3603**Other Names**

Pro-interleukin-16, Interleukin-16, IL-16, Lymphocyte chemoattractant factor, LCF, IL16

**Target/Specificity**

G11/II detects LCF, a homotetrameric glycoprotein of 56kDa molecular weight that is composed of four noncovalently linked peptides of 14 kDa. Specificity: Human: LCF (IL-16). Other species: not tested.

**Reconstitution & Storage**

Aliquot and store at -20°C. Minimize freezing and thawing.

**Precautions**

IL16 Antibody (clone G11/II) is for research use only and not for use in diagnostic or therapeutic procedures.

**IL16 Antibody (clone G11/II) - Protein Information****Name** IL16**Function**

Interleukin-16 stimulates a migratory response in CD4+ lymphocytes, monocytes, and eosinophils. Primes CD4+ T-cells for IL-2 and IL-15 responsiveness. Also induces T-lymphocyte expression of interleukin 2 receptor. Ligand for CD4. Isoform 3 is involved in cell cycle progression in T-cells. Appears to be involved in transcriptional regulation of SKP2 and is probably part of a transcriptional repression complex on the core promoter of the SKP2 gene. May act as a scaffold for GABPB1 (the DNA-binding subunit of the GABP transcription factor complex) and HDAC3 thus maintaining transcriptional repression and blocking cell cycle progression in resting T-cells.

**Cellular Location**

[Interleukin-16]: Secreted. [Isoform 3]: Cytoplasm. Nucleus.

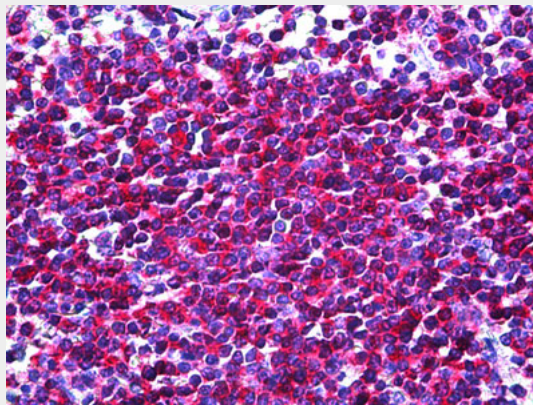
**Tissue Location**

[Isoform 3]: Expressed in hemopoietic tissues, such as resting T-cells, but undetectable during active T-cell proliferation

**IL16 Antibody (clone G11/II) - Protocols**

Provided below are standard protocols that you may find useful for product applications.

- [Western Blot](#)
- [Blocking Peptides](#)
- [Dot Blot](#)
- [Immunohistochemistry](#)
- [Immunofluorescence](#)
- [Immunoprecipitation](#)
- [Flow Cytometry](#)
- [Cell Culture](#)

**IL16 Antibody (clone G11/II) - Images**

Anti-IL-16 antibody IHC of human spleen.

**IL16 Antibody (clone G11/II) - Background**

Interleukin-16 stimulates a migratory response in CD4<sup>+</sup> lymphocytes, monocytes, and eosinophils. Primes CD4<sup>+</sup> T-cells for IL-2 and IL-15 responsiveness. Also induces T-lymphocyte expression of interleukin 2 receptor. Ligand for CD4. Isoform 3 is involved in cell cycle progression in T- cells. Appears to be involved in transcriptional regulation of SKP2 and is probably part of a transcriptional repression complex on the core promoter of the SKP2 gene. May act as a scaffold for GABPB1 (the DNA-binding subunit the GABP transcription factor complex) and HDAC3 thus maintaining transcriptional repression and blocking cell cycle progression in resting T-cells.

**IL16 Antibody (clone G11/II) - References**

Bannert N.,et al.J. Biol. Chem. 278:42190-42199(2003).  
Wang P.,et al.BMC Genomics 10:518-518(2009).  
Kornfeld H.,et al.Submitted (JAN-1999) to the EMBL/GenBank/DDBJ databases.  
Ota T.,et al.Nat. Genet. 36:40-45(2004).  
Zody M.C.,et al.Nature 440:671-675(2006).