

**MSY2 / YBX2 Antibody (C-Terminus)**  
**Rabbit Polyclonal Antibody**  
**Catalog # ALS13980****Specification**

---

**MSY2 / YBX2 Antibody (C-Terminus) - Product Information**

|                   |                        |
|-------------------|------------------------|
| Application       | IF, WB, IHC            |
| Primary Accession | <a href="#">Q9Y2T7</a> |
| Reactivity        | Human, Mouse, Rat      |
| Host              | Rabbit                 |
| Clonality         | Polyclonal             |
| Calculated MW     | 39kDa KDa              |

**MSY2 / YBX2 Antibody (C-Terminus) - Additional Information****Gene ID** 51087**Other Names**

Y-box-binding protein 2, Contrin, DNA-binding protein C, Dbpc, Germ cell-specific Y-box-binding protein, MSY2 homolog, YBX2, CSDA3, MSY2

**Target/Specificity**

Human YBX2

**Reconstitution & Storage**

Short term 4°C, long term aliquot and store at -20°C, avoid freeze thaw cycles. Store undiluted.

**Precautions**

MSY2 / YBX2 Antibody (C-Terminus) is for research use only and not for use in diagnostic or therapeutic procedures.

**MSY2 / YBX2 Antibody (C-Terminus) - Protein Information****Name** YBX2**Synonyms** CSDA3, MSY2**Function**

Major constituent of messenger ribonucleoprotein particles (mRNPs). Involved in the regulation of the stability and/or translation of germ cell mRNAs. Binds to Y-box consensus promoter element. Binds to full-length mRNA with high affinity in a sequence-independent manner. Binds to short RNA sequences containing the consensus site 5'-UCCAUCA- 3' with low affinity and limited sequence specificity. Its binding with maternal mRNAs is necessary for its cytoplasmic retention. May mark specific mRNAs (those transcribed from Y-box promoters) in the nucleus for cytoplasmic storage, thereby linking transcription and mRNA storage/translational delay (By similarity).

**Cellular Location**

Cytoplasm. Nucleus

**Tissue Location**

Expressed in oocytes and testicular germ cells in the stage of spermatogonia to spermatocyte. Also observed placental trophoblasts, as well as in vascular smooth muscle cells in the pulmonary artery, myocardium, and skeletal muscle. Undetectable in epithelial cells in respiratory, gastrointestinal, and urogenital tracts. Up-regulated in various carcinomas and germ cell tumors (at protein level).

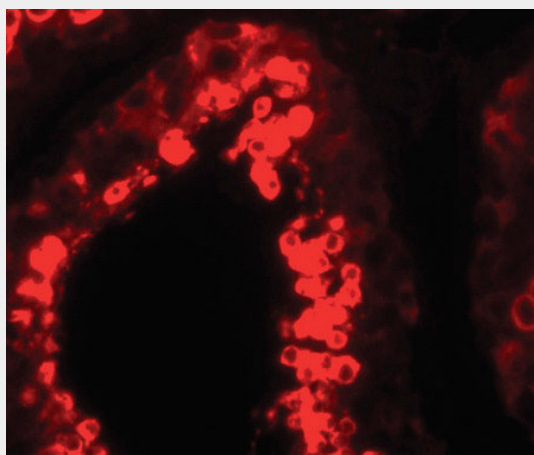
**Volume**

50  $\mu$ l

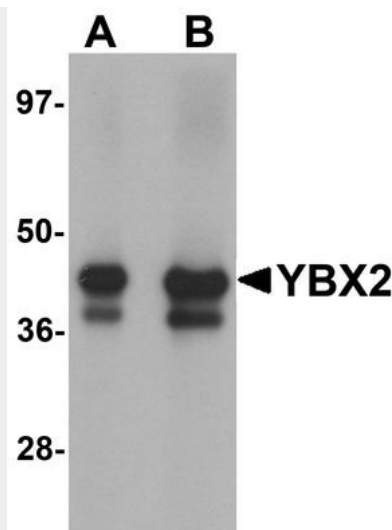
**MSY2 / YBX2 Antibody (C-Terminus) - Protocols**

Provided below are standard protocols that you may find useful for product applications.

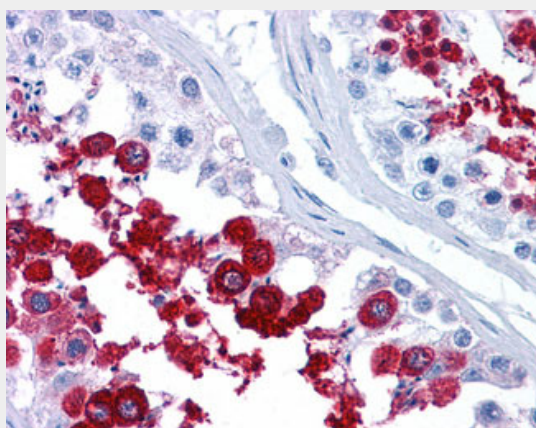
- [Western Blot](#)
- [Blocking Peptides](#)
- [Dot Blot](#)
- [Immunohistochemistry](#)
- [Immunofluorescence](#)
- [Immunoprecipitation](#)
- [Flow Cytometry](#)
- [Cell Culture](#)

**MSY2 / YBX2 Antibody (C-Terminus) - Images**

Immunofluorescence of YBX2 in human testis tissue with YBX2 antibody at 20 ug/ml.



Western blot analysis of YBX2 in human testis tissue lysate with YBX2 antibody at (A) 1 and (B)...



Anti-YBX2 antibody IHC of human testis.

#### **MSY2 / YBX2 Antibody (C-Terminus) - Background**

Major constituent of messenger ribonucleoprotein particles (mRNPs). Involved in the regulation of the stability and/or translation of germ cell mRNAs. Binds to Y-box consensus promoter element. Binds to full length mRNA with high affinity in a sequence-independent manner. Binds to short RNA sequences containing the consensus site 5'-UCCAUCA-3' with low affinity and limited sequence specificity. Its binding with maternal mRNAs is necessary for its cytoplasmic retention. May mark specific mRNAs (those transcribed from Y-box promoters) in the nucleus for cytoplasmic storage, thereby linking transcription and mRNA storage/translational delay (By similarity).

#### **MSY2 / YBX2 Antibody (C-Terminus) - References**

Tekur S.,et al.J. Androl. 20:135-144(1999).  
Mural R.J.,et al.Submitted (SEP-2005) to the EMBL/GenBank/DDBJ databases.  
Kohn Y.,et al.Br. J. Cancer 94:710-716(2006).