

NSF Antibody
Rabbit Polyclonal Antibody
Catalog # ALS14011**Specification**

NSF Antibody - Product Information

Application	IHC
Primary Accession	P46459
Reactivity	Mouse, Rat
Host	Rabbit
Clonality	Polyclonal
Calculated MW	83kDa KDa

NSF Antibody - Additional Information**Gene ID** 4905**Other Names**

Vesicle-fusing ATPase, 3.6.4.6, N-ethylmaleimide-sensitive fusion protein, NEM-sensitive fusion protein, Vesicular-fusion protein NSF, NSF

Target/Specificity

The antibody recognizes 85 kD NSF of mouse, and rat origins. Reactivity to other species has not been tested.

Reconstitution & Storage

Aliquot and store at -20°C. Minimize freezing and thawing.

Precautions

NSF Antibody is for research use only and not for use in diagnostic or therapeutic procedures.

NSF Antibody - Protein Information**Name** NSF**Function**

Required for vesicle-mediated transport. Catalyzes the fusion of transport vesicles within the Golgi cisternae. Is also required for transport from the endoplasmic reticulum to the Golgi stack. Seems to function as a fusion protein required for the delivery of cargo proteins to all compartments of the Golgi stack independent of vesicle origin. Interaction with AMPAR subunit GRIA2 leads to influence GRIA2 membrane cycling (By similarity).

Cellular Location

Cytoplasm.

Volume

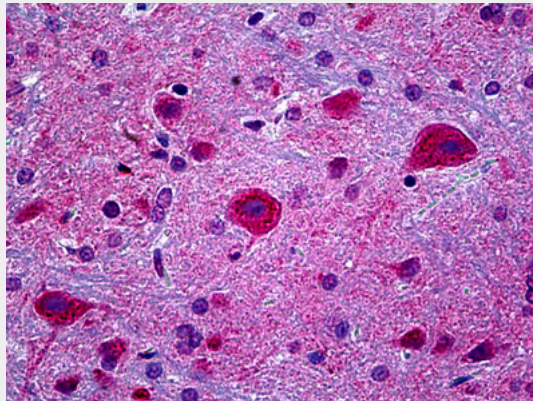
50 µl

NSF Antibody - Protocols

Provided below are standard protocols that you may find useful for product applications.

- [Western Blot](#)
- [Blocking Peptides](#)
- [Dot Blot](#)
- [Immunohistochemistry](#)
- [Immunofluorescence](#)
- [Immunoprecipitation](#)
- [Flow Cytometry](#)
- [Cell Culture](#)

NSF Antibody - Images



Anti-NSF antibody IHC of rat brain.

NSF Antibody - Background

Required for vesicle-mediated transport. Catalyzes the fusion of transport vesicles within the Golgi cisternae. Is also required for transport from the endoplasmic reticulum to the Golgi stack. Seems to function as a fusion protein required for the delivery of cargo proteins to all compartments of the Golgi stack independent of vesicle origin. Interaction with AMPAR subunit GRIA2 leads to influence GRIA2 membrane cycling (By similarity).

NSF Antibody - References

Hong R.,et al.Submitted (DEC-1993) to the EMBL/GenBank/DDBJ databases.
Bui T.D.,et al.Submitted (MAR-1999) to the EMBL/GenBank/DDBJ databases.
Zhang R.,et al.Submitted (SEP-2000) to the EMBL/GenBank/DDBJ databases.
Ota T.,et al.Nat. Genet. 36:40-45(2004).
Zody M.C.,et al.Nature 440:1045-1049(2006).