

HEP / EPHB6 Antibody (clone 5D8)
Mouse Monoclonal Antibody
Catalog # ALS14047**Specification**

HEP / EPHB6 Antibody (clone 5D8) - Product Information

Application	WB, IHC
Primary Accession	O15197
Reactivity	Human, Mouse, Rat
Host	Mouse
Clonality	Monoclonal
Calculated MW	111kDa KDa

HEP / EPHB6 Antibody (clone 5D8) - Additional Information**Gene ID** 2051**Other Names**

Ephrin type-B receptor 6, HEP, Tyrosine-protein kinase-defective receptor EPH-6, EPHB6

Target/Specificity

Human EPHB6

Reconstitution & Storage

Short term 4°C, long term aliquot and store at -20°C, avoid freeze thaw cycles.

Precautions

HEP / EPHB6 Antibody (clone 5D8) is for research use only and not for use in diagnostic or therapeutic procedures.

HEP / EPHB6 Antibody (clone 5D8) - Protein Information**Name** EPHB6**Function**

Kinase-defective receptor for members of the ephrin-B family. Binds to ephrin-B1 and ephrin-B2. Modulates cell adhesion and migration by exerting both positive and negative effects upon stimulation with ephrin-B2. Inhibits JNK activation, T-cell receptor-induced IL-2 secretion and CD25 expression upon stimulation with ephrin-B2.

Cellular Location

Membrane; Single-pass type I membrane protein.

Tissue Location

Expressed in brain. Expressed in non invasive breast carcinoma cell lines (at protein level). Strong expression in brain and pancreas, and weak expression in other tissues, such as heart, placenta, lung, liver, skeletal muscle and kidney. Expressed in breast non invasive tumors but not in metastatic lesions. Isoform 3 is expressed in cell lines of glioblastomas, anaplastic astrocytomas,

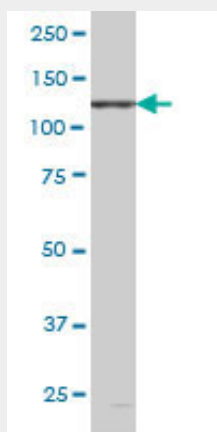
gliosarcomas and astrocytomas. Isoform 3 is not detected in normal tissues.

HEP / EPHB6 Antibody (clone 5D8) - Protocols

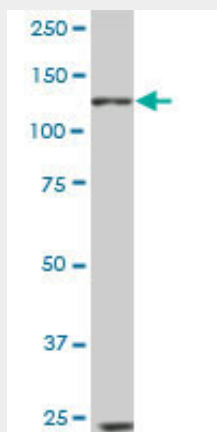
Provided below are standard protocols that you may find useful for product applications.

- [Western Blot](#)
- [Blocking Peptides](#)
- [Dot Blot](#)
- [Immunohistochemistry](#)
- [Immunofluorescence](#)
- [Immunoprecipitation](#)
- [Flow Cytometry](#)
- [Cell Culture](#)

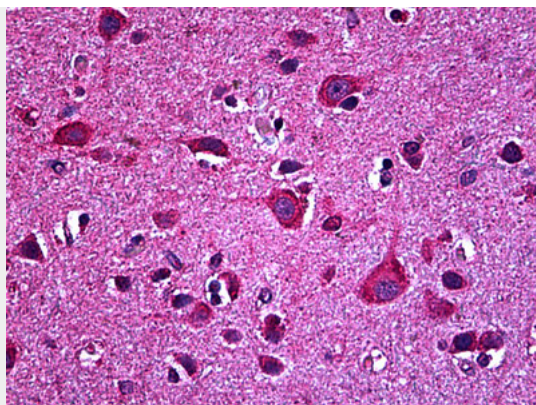
HEP / EPHB6 Antibody (clone 5D8) - Images



EPHB6 monoclonal antibody clone 5D8 Western blot of EPHB6 expression in PC-12.



EPHB6 monoclonal antibody clone 5D8. Western blot of EPHB6 expression in NIH/3T3.



Anti-EPHB6 antibody IHC of human brain, cortex.

HEP / EPHB6 Antibody (clone 5D8) - Background

Kinase-defective receptor for members of the ephrin-B family. Binds to ephrin-B1 and ephrin-B2. Modulates cell adhesion and migration by exerting both positive and negative effects upon stimulation with ephrin-B2. Inhibits JNK activation, T-cell receptor-induced IL-2 secretion and CD25 expression upon stimulation with ephrin-B2.

HEP / EPHB6 Antibody (clone 5D8) - References

Matsuoka H.,et al.Biochem. Biophys. Res. Commun. 235:487-492(1997).
Hillier L.W.,et al.Nature 424:157-164(2003).
Scherer S.W.,et al.Science 300:767-772(2003).
Mural R.J.,et al.Submitted (SEP-2005) to the EMBL/GenBank/DDBJ databases.
Jin M.,et al.Oncol. Rep. 19:1277-1283(2008).