

BCAS1 / NABC1 Antibody (clone 1B5)
Mouse Monoclonal Antibody
Catalog # ALS14071**Specification**

BCAS1 / NABC1 Antibody (clone 1B5) - Product Information

Application	IHC
Primary Accession	075363
Reactivity	Human
Host	Mouse
Clonality	Monoclonal
Calculated MW	62kDa KDa

BCAS1 / NABC1 Antibody (clone 1B5) - Additional Information**Gene ID** 8537**Other Names**

Breast carcinoma-amplified sequence 1, Amplified and overexpressed in breast cancer, Novel amplified in breast cancer 1, BCAS1, AIBC1, NABC1

Target/Specificity

Human BCAS1

Reconstitution & Storage

Store at -20°C or lower. Aliquot to avoid repeated freezing and thawing.

Precautions

BCAS1 / NABC1 Antibody (clone 1B5) is for research use only and not for use in diagnostic or therapeutic procedures.

BCAS1 / NABC1 Antibody (clone 1B5) - Protein Information**Name** BCAS1**Synonyms** AIBC1, NABC1**Function**

Required for myelination.

Cellular Location

Cytoplasm.

Tissue Location

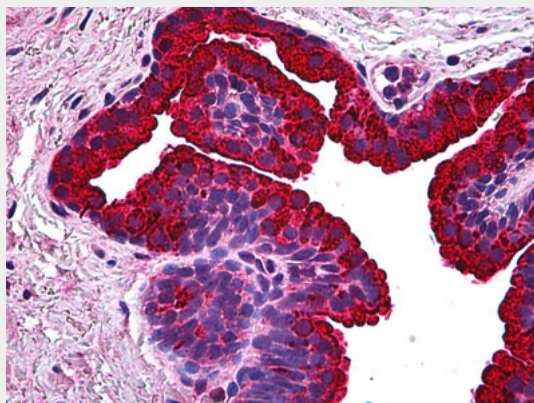
Highly expressed in the brain and, more specifically, in oligodendrocytes (at protein level). Expressed in the prostate, and at lower levels in testis, intestine and colon Overexpressed in most breast cancer cell lines and down-regulated in some colorectal tumors.

BCAS1 / NABC1 Antibody (clone 1B5) - Protocols

Provided below are standard protocols that you may find useful for product applications.

- [Western Blot](#)
- [Blocking Peptides](#)
- [Dot Blot](#)
- [Immunohistochemistry](#)
- [Immunofluorescence](#)
- [Immunoprecipitation](#)
- [Flow Cytometry](#)
- [Cell Culture](#)

BCAS1 / NABC1 Antibody (clone 1B5) - Images



Anti-BCAS1 / NABC1 antibody IHC of human prostate.

BCAS1 / NABC1 Antibody (clone 1B5) - References

Collins C., et al. Proc. Natl. Acad. Sci. U.S.A. 95:8703-8708(1998).
Deloukas P., et al. Nature 414:865-871(2001).
Correa R.G., et al. Genomics 65:299-302(2000).
Bechtel S., et al. BMC Genomics 8:399-399(2007).
Beardsley D.I., et al. Exp. Cell Res. 290:402-413(2003).