

STAG2 Antibody (clone 3C6)
Mouse Monoclonal Antibody
Catalog # ALS14080**Specification**

STAG2 Antibody (clone 3C6) - Product Information

Application	WB, IF, IHC
Primary Accession	Q8N3U4
Reactivity	Human, Mouse
Host	Mouse
Clonality	Monoclonal
Calculated MW	141kDa KDa

STAG2 Antibody (clone 3C6) - Additional Information**Gene ID** 10735**Other Names**

Cohesin subunit SA-2, SCC3 homolog 2, Stromal antigen 2, STAG2, SA2

Target/Specificity

Human Nuclear Protein SA-2

Reconstitution & Storage

Short term 4°C, long term aliquot and store at -20°C, avoid freeze thaw cycles.

Precautions

STAG2 Antibody (clone 3C6) is for research use only and not for use in diagnostic or therapeutic procedures.

STAG2 Antibody (clone 3C6) - Protein Information**Name** STAG2**Synonyms** SA2**Function**

Component of cohesin complex, a complex required for the cohesion of sister chromatids after DNA replication. The cohesin complex apparently forms a large proteinaceous ring within which sister chromatids can be trapped. At anaphase, the complex is cleaved and dissociates from chromatin, allowing sister chromatids to segregate. The cohesin complex may also play a role in spindle pole assembly during mitosis.

Cellular Location

Nucleus. Chromosome. Chromosome, centromere. Note=Associates with chromatin. Before prophase it is scattered along chromosome arms. During prophase, most of cohesin complexes dissociate from chromatin probably because of phosphorylation by PLK1, except at centromeres, where cohesin complexes remain. At anaphase, the RAD21 subunit of cohesin is cleaved, leading

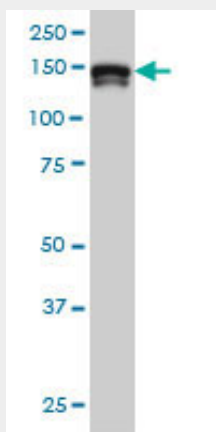
to the dissociation of the complex from chromosomes, allowing chromosome separation. In germ cells, cohesin complex dissociates from chromatin at prophase I, and may be replaced by a meiosis-specific cohesin complex

STAG2 Antibody (clone 3C6) - Protocols

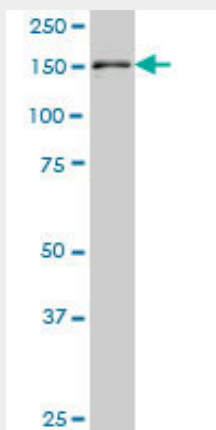
Provided below are standard protocols that you may find useful for product applications.

- [Western Blot](#)
- [Blocking Peptides](#)
- [Dot Blot](#)
- [Immunohistochemistry](#)
- [Immunofluorescence](#)
- [Immunoprecipitation](#)
- [Flow Cytometry](#)
- [Cell Culture](#)

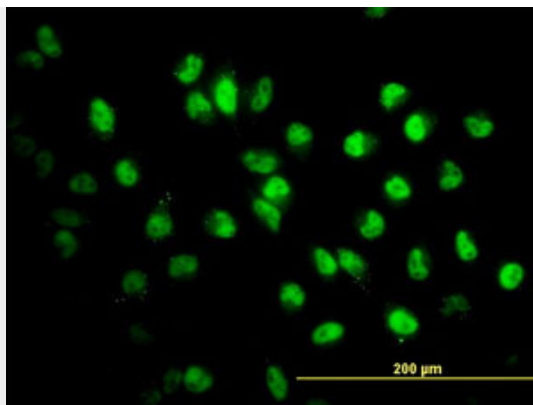
STAG2 Antibody (clone 3C6) - Images



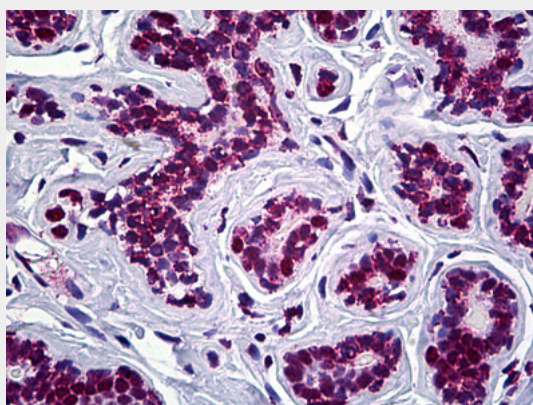
Western blot of STAG2 expression in HeLa nuclear extract with STAG2 monoclonal antibody, clone 3C6.



Western blot of STAG2 expression in NIH/3T3 cells with STAG2 monoclonal antibody, clone 3C6.



Immunofluorescence of monoclonal antibody to STAG2 on HeLa cell. [antibody concentration 10 ug/ml]



Anti-STAG2 antibody IHC of human breast.

STAG2 Antibody (clone 3C6) - Background

Component of cohesin complex, a complex required for the cohesion of sister chromatids after DNA replication. The cohesin complex apparently forms a large proteinaceous ring within which sister chromatids can be trapped. At anaphase, the complex is cleaved and dissociates from chromatin, allowing sister chromatids to segregate. The cohesin complex may also play a role in spindle pole assembly during mitosis.

STAG2 Antibody (clone 3C6) - References

- Bechtel S.,et al.BMC Genomics 8:399-399(2007).
- Ross M.T.,et al.Nature 434:325-337(2005).
- Mural R.J.,et al.Submitted (SEP-2005) to the EMBL/GenBank/DDBJ databases.
- Carramolino L.,et al.Gene 195:151-159(1997).
- Carramolino L.,et al.Gene 206:283-286(1998).