

**MECP2 Antibody (clone 4B6)**  
**Mouse Monoclonal Antibody**  
**Catalog # ALS14094****Specification**

---

**MECP2 Antibody (clone 4B6) - Product Information**

Application	WB
Primary Accession	<a href="#">P51608</a>
Reactivity	Human, Mouse, Rat
Host	Mouse
Clonality	Monoclonal
Calculated MW	52kDa KDa

**MECP2 Antibody (clone 4B6) - Additional Information****Gene ID** 4204**Other Names**

Methyl-CpG-binding protein 2, MeCp-2 protein, MeCp2, MECP2

**Target/Specificity**

Human MeCP2

**Reconstitution & Storage**

For long term, store at -20°C. Avoid repeat freeze-thaw cycles.

**Precautions**

MECP2 Antibody (clone 4B6) is for research use only and not for use in diagnostic or therapeutic procedures.

**MECP2 Antibody (clone 4B6) - Protein Information****Name** MECP2**Function**

Chromosomal protein that binds to methylated DNA. It can bind specifically to a single methyl-CpG pair. It is not influenced by sequences flanking the methyl-CpGs. Mediates transcriptional repression through interaction with histone deacetylase and the corepressor SIN3A. Binds both 5-methylcytosine (5mC) and 5-hydroxymethylcytosine (5hmC)- containing DNA, with a preference for 5-methylcytosine (5mC).

**Cellular Location**

Nucleus {ECO:0000250|UniProtKB:Q9Z2D6}. Note=Colocalized with methyl-CpG in the genome. Colocalized with TBL1X to the heterochromatin foci.

**Tissue Location**

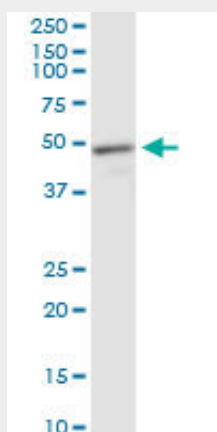
Present in all adult somatic tissues tested.

## MECP2 Antibody (clone 4B6) - Protocols

Provided below are standard protocols that you may find useful for product applications.

- [Western Blot](#)
- [Blocking Peptides](#)
- [Dot Blot](#)
- [Immunohistochemistry](#)
- [Immunofluorescence](#)
- [Immunoprecipitation](#)
- [Flow Cytometry](#)
- [Cell Culture](#)

## MECP2 Antibody (clone 4B6) - Images



MECP2 monoclonal antibody clone 4B6. Western blot of MECP2 expression in rat muscle.

## MECP2 Antibody (clone 4B6) - Background

Chromosomal protein that binds to methylated DNA. It can bind specifically to a single methyl-CpG pair. It is not influenced by sequences flanking the methyl-CpGs. Mediates transcriptional repression through interaction with histone deacetylase and the corepressor SIN3A. Binds both 5-methylcytosine (5mC) and 5-hydroxymethylcytosine (5hmC)-containing DNA, with a preference for 5-methylcytosine (5mC) (By similarity).

## MECP2 Antibody (clone 4B6) - References

Kudo S.,et al.Mol. Cell. Biol. 18:5492-5499(1998).  
Vilain A.,et al.Cytogenet. Cell Genet. 74:293-294(1996).  
Coy J.F.,et al.Hum. Mol. Genet. 8:1253-1262(1999).  
Reichwald K.,et al.Mamm. Genome 11:182-190(2000).  
Mnatzakanian G.N.,et al.Nat. Genet. 36:339-341(2004).