

MEF2A / MEF2 Antibody (clone 1A10)
Mouse Monoclonal Antibody
Catalog # ALS14099**Specification**

MEF2A / MEF2 Antibody (clone 1A10) - Product Information

Application	WB, IF, IHC
Primary Accession	Q02078
Reactivity	Human
Host	Mouse
Clonality	Monoclonal
Calculated MW	55kDa KDa

MEF2A / MEF2 Antibody (clone 1A10) - Additional Information**Gene ID** 4205**Other Names**

Myocyte-specific enhancer factor 2A, Serum response factor-like protein 1, MEF2A, MEF2

Target/Specificity

Human MEF2A

Reconstitution & Storage

Short term 4°C, long term aliquot and store at -20°C, avoid freeze thaw cycles.

Precautions

MEF2A / MEF2 Antibody (clone 1A10) is for research use only and not for use in diagnostic or therapeutic procedures.

MEF2A / MEF2 Antibody (clone 1A10) - Protein Information**Name** MEF2A**Synonyms** MEF2**Function**

Transcriptional activator which binds specifically to the MEF2 element, 5'-YTA[AT](4)TAR-3', found in numerous muscle-specific genes. Also involved in the activation of numerous growth factor- and stress-induced genes. Mediates cellular functions not only in skeletal and cardiac muscle development, but also in neuronal differentiation and survival. Plays diverse roles in the control of cell growth, survival and apoptosis via p38 MAPK signaling in muscle-specific and/or growth factor-related transcription. In cerebellar granule neurons, phosphorylated and sumoylated MEF2A represses transcription of NUR77 promoting synaptic differentiation. Associates with chromatin to the ZNF16 promoter.

Cellular Location

Nucleus {ECO:0000255|PROSITE-ProRule:PRU00251, ECO:0000269|PubMed:12691662,

ECO:0000269|PubMed:16563226}

Tissue Location

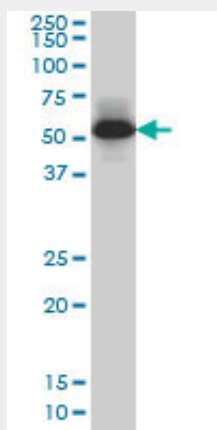
Isoform MEF2 and isoform MEFA are expressed only in skeletal and cardiac muscle and in the brain. Isoform RSRFC4 and isoform RSRFC9 are expressed in all tissues examined

MEF2A / MEF2 Antibody (clone 1A10) - Protocols

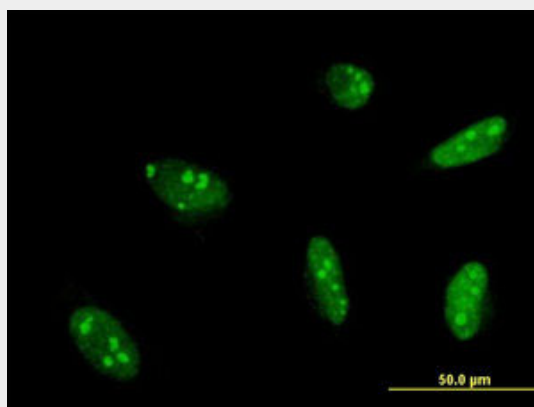
Provided below are standard protocols that you may find useful for product applications.

- [Western Blot](#)
- [Blocking Peptides](#)
- [Dot Blot](#)
- [Immunohistochemistry](#)
- [Immunofluorescence](#)
- [Immunoprecipitation](#)
- [Flow Cytometry](#)
- [Cell Culture](#)

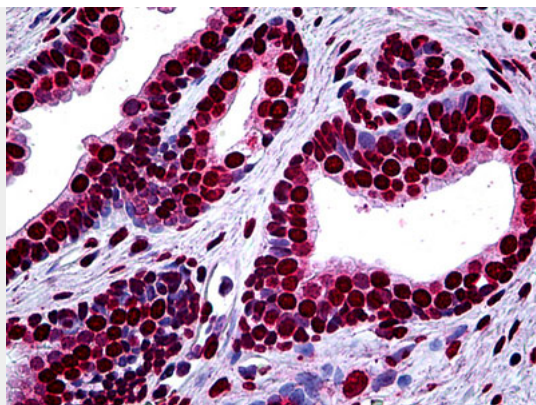
MEF2A / MEF2 Antibody (clone 1A10) - Images



MEF2A monoclonal antibody clone 1A10. Western blot of MEF2A expression in human lung cancer.



Immunofluorescence of monoclonal antibody to MEF2A on HeLa cell. [antibody concentration 10 ug/ml].



Anti-MEF2A antibody IHC of human prostate.

MEF2A / MEF2 Antibody (clone 1A10) - Background

Transcriptional activator which binds specifically to the MEF2 element, 5'-YTA[AT](4)TAR-3', found in numerous muscle-specific genes. Also involved in the activation of numerous growth factor- and stress-induced genes. Mediates cellular functions not only in skeletal and cardiac muscle development, but also in neuronal differentiation and survival. Plays diverse roles in the control of cell growth, survival and apoptosis via p38 MAPK signaling in muscle-specific and/or growth factor-related transcription. In cerebellar granule neurons, phosphorylated and sumoylated MEF2A represses transcription of NUR77 promoting synaptic differentiation. Associates with chromatin to the ZNF16 promoter.

MEF2A / MEF2 Antibody (clone 1A10) - References

Pollock R., et al. *Genes Dev.* 5:2327-2341(1991).
Treisman R., et al. Submitted (NOV-1993) to the EMBL/GenBank/DDBJ databases.
Yu Y.-T., et al. *Genes Dev.* 6:1783-1798(1992).
Suzuki E., et al. Submitted (FEB-1996) to the EMBL/GenBank/DDBJ databases.
Ota T., et al. *Nat. Genet.* 36:40-45(2004).