

**MYH9 Antibody (clone 4H3)**  
**Mouse Monoclonal Antibody**  
**Catalog # ALS14106****Specification**

---

**MYH9 Antibody (clone 4H3) - Product Information**

Application	IF, IHC
Primary Accession	<a href="#">P35579</a>
Reactivity	Human
Host	Mouse
Clonality	Monoclonal
Calculated MW	227kDa KDa

**MYH9 Antibody (clone 4H3) - Additional Information****Gene ID** 4627**Other Names**

Myosin-9, Cellular myosin heavy chain, type A, Myosin heavy chain 9, Myosin heavy chain, non-muscle IIa, Non-muscle myosin heavy chain A, NMMHC-A, Non-muscle myosin heavy chain IIa, NMMHC II-a, NMMHC-IIA, MYH9

**Target/Specificity**

Human MYH9

**Reconstitution & Storage**

Short term 4°C, long term aliquot and store at -20°C, avoid freeze thaw cycles.

**Precautions**

MYH9 Antibody (clone 4H3) is for research use only and not for use in diagnostic or therapeutic procedures.

**MYH9 Antibody (clone 4H3) - Protein Information****Name** MYH9**Function**

Cellular myosin that appears to play a role in cytokinesis, cell shape, and specialized functions such as secretion and capping. Required for cortical actin clearance prior to oocyte exocytosis (By similarity). Promotes cell motility in conjunction with S100A4 (PubMed:<a href="http://www.uniprot.org/citations/16707441" target="\_blank">16707441</a>). During cell spreading, plays an important role in cytoskeleton reorganization, focal contact formation (in the margins but not the central part of spreading cells), and lamellipodial retraction; this function is mechanically antagonized by MYH10 (PubMed:<a href="http://www.uniprot.org/citations/20052411" target="\_blank">20052411</a>).

**Cellular Location**

Cytoplasm, cytoskeleton. Cytoplasm, cell cortex {ECO:0000250|UniProtKB:Q8VDD5}. Cytoplasmic

vesicle, secretory vesicle, Cortical granule {ECO:0000250|UniProtKB:Q8VDD5}. Note=Colocalizes with actin filaments at lamellipodia margins and at the leading edge of migrating cells (PubMed:20052411). In retinal pigment epithelial cells, predominantly localized to stress fiber-like structures with some localization to cytoplasmic puncta (PubMed:27331610)

#### **Tissue Location**

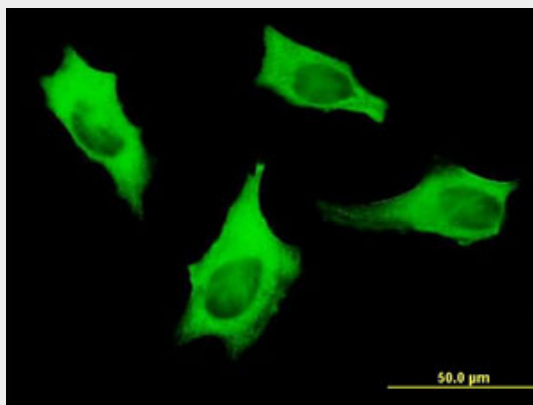
In the kidney, expressed in the glomeruli. Also expressed in leukocytes.

#### **MYH9 Antibody (clone 4H3) - Protocols**

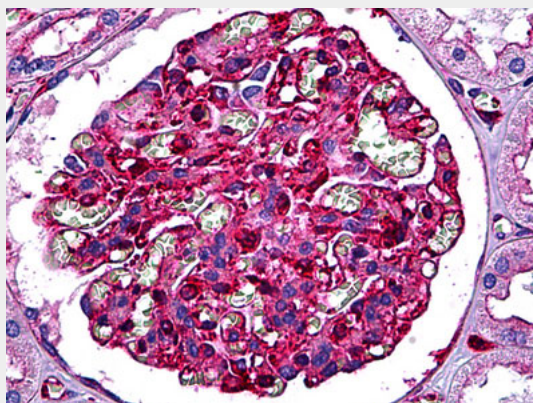
Provided below are standard protocols that you may find useful for product applications.

- [Western Blot](#)
- [Blocking Peptides](#)
- [Dot Blot](#)
- [Immunohistochemistry](#)
- [Immunofluorescence](#)
- [Immunoprecipitation](#)
- [Flow Cytometry](#)
- [Cell Culture](#)

#### **MYH9 Antibody (clone 4H3) - Images**



Immunofluorescence of monoclonal antibody to MYH9 on HeLa cell. [antibody concentration 10 ug/ml].



Anti-MYH9 antibody IHC of human kidney, glomeruli.

#### **MYH9 Antibody (clone 4H3) - Background**

Cellular myosin that appears to play a role in cytokinesis, cell shape, and specialized functions such as secretion and capping. During cell spreading, plays an important role in cytoskeleton reorganization, focal contacts formation (in the margins but not the central part of spreading cells), and lamellipodial retraction; this function is mechanically antagonized by MYH10.

**MYH9 Antibody (clone 4H3) - References**

Collins J.E.,et al.Genome Biol. 5:R84.1-R84.11(2004).

Kato S.,et al.DNA Res. 12:53-62(2005).

Bechtel S.,et al.BMC Genomics 8:399-399(2007).

Yamakawa H.,et al.Submitted (JAN-2007) to the EMBL/GenBank/DDBJ databases.

Dunham I.,et al.Nature 402:489-495(1999).