

SOLO / SESTD1 Antibody (C-Terminus)
Rabbit Polyclonal Antibody
Catalog # ALS14119**Specification**

SOLO / SESTD1 Antibody (C-Terminus) - Product Information

Application	IF, WB, IHC
Primary Accession	Q86VW0
Reactivity	Human, Mouse, Rat
Host	Rabbit
Clonality	Polyclonal
Calculated MW	79kDa KDa

SOLO / SESTD1 Antibody (C-Terminus) - Additional Information**Gene ID** 91404**Other Names**

SEC14 domain and spectrin repeat-containing protein 1, Huntingtin-interacting protein-like protein, Protein Solo, SESTD1, SOLO

Target/Specificity

Human SESTD1

Reconstitution & Storage

Short term 4°C, long term aliquot and store at -20°C, avoid freeze thaw cycles. Store undiluted.

Precautions

SOLO / SESTD1 Antibody (C-Terminus) is for research use only and not for use in diagnostic or therapeutic procedures.

SOLO / SESTD1 Antibody (C-Terminus) - Protein Information**Name** SESTD1**Synonyms** SOLO**Function**

May act as the primary docking protein directing membrane turnover and assembly of the transient receptor potential channels TRPC4 and TRPC5. Binds phospholipids such as phosphatidylinositol monophosphates, phosphatidylinositol diphosphates (PIP2s) and phosphatidic acid, but not less polar lipids including phosphatidylcholine, phosphatidylserine, and phosphatidylinositol. The binding to PIP2s is calcium dependent. Might be involved in the plasma membrane localization of CTNNB1.

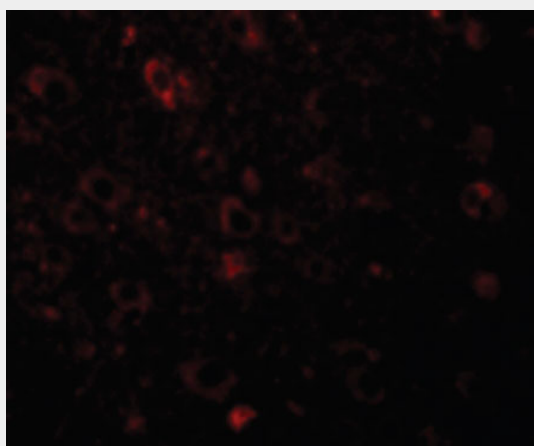
Tissue Location

Broad expression. High expression in thalamus and brain. Significantly expressed in vasculature

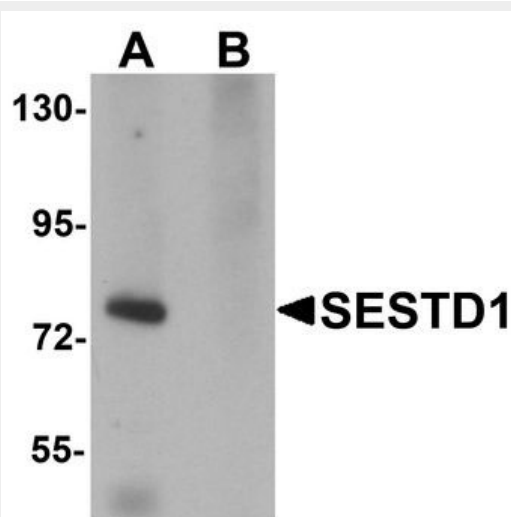
SOLO / SESTD1 Antibody (C-Terminus) - Protocols

Provided below are standard protocols that you may find useful for product applications.

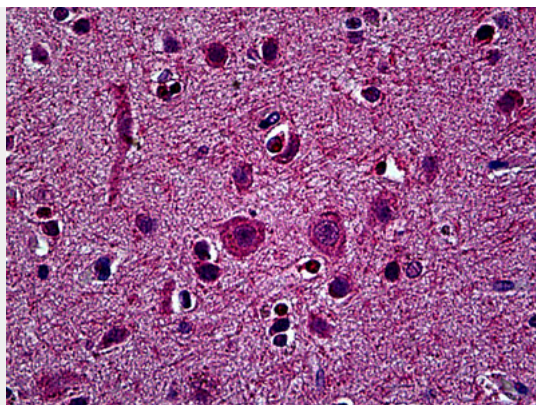
- [Western Blot](#)
- [Blocking Peptides](#)
- [Dot Blot](#)
- [Immunohistochemistry](#)
- [Immunofluorescence](#)
- [Immunoprecipitation](#)
- [Flow Cytometry](#)
- [Cell Culture](#)

SOLO / SESTD1 Antibody (C-Terminus) - Images

Immunofluorescence of SESTD1 in Human Brain cells with SESTD1 antibody at 20 ug/ml.



Western blot analysis of SESTD1 in rat brain tissue lysate with SESTD1 antibody at 1 ug/ml in...



Anti-SESTD1 antibody IHC of human brain, cortex.

SOLO / SESTD1 Antibody (C-Terminus) - Background

May act as the primary docking protein directing membrane turnover and assembly of the transient receptor potential channels TRPC4 and TRPC5. Binds phospholipids such as phosphatidylinositol monophosphates, phosphatidylinositol diphosphates (PIP2s) and phosphatidic acid, but not less polar lipids including phosphatidylcholine, phosphatidylserine, and phosphatidylinositol. The binding to PIP2s is calcium dependent. Might be involved in the plasma membrane localization of CTNNB1.

SOLO / SESTD1 Antibody (C-Terminus) - References

Xu J.,et al.Submitted (JAN-2003) to the EMBL/GenBank/DDBJ databases.
Hillier L.W.,et al.Nature 434:724-731(2005).
Ota T.,et al.Nat. Genet. 36:40-45(2004).
Miehe S.,et al.J. Biol. Chem. 285:12426-12434(2010).