

S100A6 Antibody (clone 6B5)
Mouse Monoclonal Antibody
Catalog # ALS14149**Specification**

S100A6 Antibody (clone 6B5) - Product Information

| | |
|-------------------|------------------------|
| Application | WB, IF, IHC |
| Primary Accession | P06703 |
| Reactivity | Human |
| Host | Mouse |
| Clonality | Monoclonal |
| Calculated MW | 10kDa KDa |

S100A6 Antibody (clone 6B5) - Additional Information**Gene ID** 6277**Other Names**

Protein S100-A6, Calcyclin, Growth factor-inducible protein 2A9, MLN 4, Prolactin receptor-associated protein, PRA, S100 calcium-binding protein A6, S100A6, CACY

Target/Specificity

Human S100A6

Reconstitution & Storage

Short term 4°C, long term aliquot and store at -20°C, avoid freeze thaw cycles.

Precautions

S100A6 Antibody (clone 6B5) is for research use only and not for use in diagnostic or therapeutic procedures.

S100A6 Antibody (clone 6B5) - Protein Information**Name** S100A6**Synonyms** CACY**Function**

May function as calcium sensor and modulator, contributing to cellular calcium signaling. May function by interacting with other proteins, such as TPR-containing proteins, and indirectly play a role in many physiological processes such as the reorganization of the actin cytoskeleton and in cell motility. Binds 2 calcium ions. Calcium binding is cooperative.

Cellular Location

Nucleus envelope. Cytoplasm. Cell membrane; Peripheral membrane protein; Cytoplasmic side

Volume

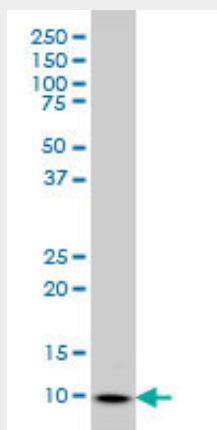
100 µl

S100A6 Antibody (clone 6B5) - Protocols

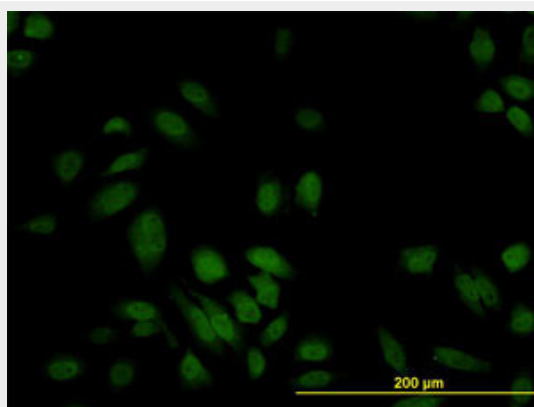
Provided below are standard protocols that you may find useful for product applications.

- [Western Blot](#)
- [Blocking Peptides](#)
- [Dot Blot](#)
- [Immunohistochemistry](#)
- [Immunofluorescence](#)
- [Immunoprecipitation](#)
- [Flow Cytometry](#)
- [Cell Culture](#)

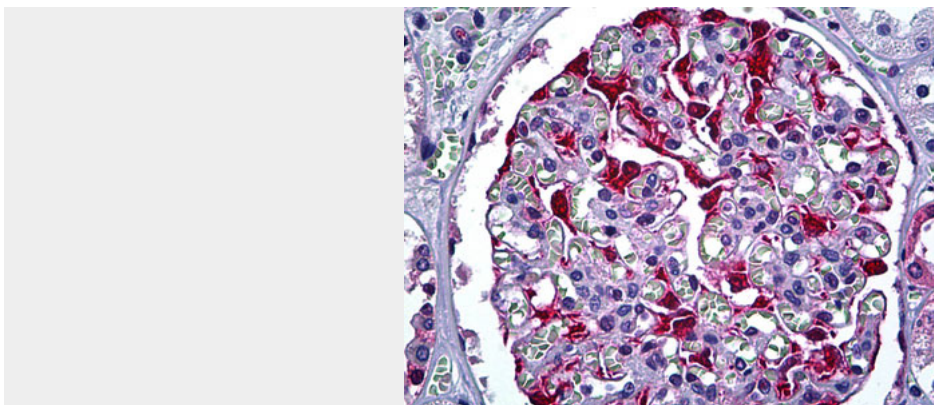
S100A6 Antibody (clone 6B5) - Images



S100A6 monoclonal antibody clone 6B5 Western blot of S100A6 expression in HeLa.



Immunofluorescence of monoclonal antibody to S100A6 on HeLa cell. [antibody concentration 10 ug/ml]



Anti-S100A6 antibody IHC of human kidney, glomerulus.

S100A6 Antibody (clone 6B5) - Background

May function as calcium sensor and modulator, contributing to cellular calcium signaling. May function by interacting with other proteins, such as TPR-containing proteins, and indirectly play a role in many physiological processes such as the reorganization of the actin cytoskeleton and in cell motility. Binds 2 calcium ions. Calcium binding is cooperative.

S100A6 Antibody (clone 6B5) - References

- Calabretta B.,et al.J. Biol. Chem. 261:12628-12632(1986).
Ferrari S.,et al.J. Biol. Chem. 262:8325-8332(1987).
Murphy L.C.,et al.J. Biol. Chem. 263:2397-2401(1988).
Wu J.,et al.Submitted (MAY-2001) to the EMBL/GenBank/DDBJ databases.
Kalnine N.,et al.Submitted (MAY-2003) to the EMBL/GenBank/DDBJ databases.