

TRF1 / TERF1 Antibody (clone BED5)
Mouse Monoclonal Antibody
Catalog # ALS14280**Specification**

TRF1 / TERF1 Antibody (clone BED5) - Product Information

Application	IHC
Primary Accession	P54274
Reactivity	Human
Host	Mouse
Clonality	Monoclonal
Calculated MW	50kDa KDa

TRF1 / TERF1 Antibody (clone BED5) - Additional Information**Gene ID** 7013**Other Names**

Telomeric repeat-binding factor 1, NIMA-interacting protein 2, TTAGGG repeat-binding factor 1, Telomeric protein Pin2/TRF1, TERF1, PIN2, TRBF1, TRF, TRF1

Target/Specificity

Recognizes TTAGGG repeat binding factor 1 (TRF1) a ubiquitously expressed 60kD protein. Along with tankyrase-1, TIN2, and PINX1, TRF1 binds the double-stranded TTAGGG repeat of telomeres and regulates telomere length. Protection of telomeres-1 (POT1) ...

Reconstitution & Storage

Short term 4°C, long term aliquot and store at -20°C, avoid freeze thaw cycles.

Precautions

TRF1 / TERF1 Antibody (clone BED5) is for research use only and not for use in diagnostic or therapeutic procedures.

TRF1 / TERF1 Antibody (clone BED5) - Protein Information**Name** TRF1**Synonyms** PIN2, TRBF1, TRF, TRF1**Function**

Binds the telomeric double-stranded 5'-TTAGGG-3' repeat and negatively regulates telomere length. Involved in the regulation of the mitotic spindle. Component of the shelterin complex (telosome) that is involved in the regulation of telomere length and protection. Shelterin associates with arrays of double-stranded 5'-TTAGGG-3' repeats added by telomerase and protects chromosome ends; without its protective activity, telomeres are no longer hidden from the DNA damage surveillance and chromosome ends are inappropriately processed by DNA repair pathways.

Cellular Location

Nucleus. Cytoplasm, cytoskeleton, spindle. Chromosome, telomere. Note=Colocalizes with telomeric DNA in interphase and prophase cells. Telomeric localization decreases in metaphase, anaphase and telophase. Associates with the mitotic spindle (PubMed:11943150). Colocalizes with TRIOBP isoform 1 at the telomeres in interphase (PubMed:24692559)

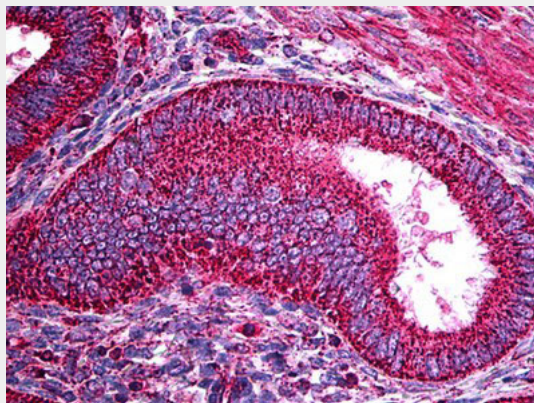
Tissue Location

Highly expressed and ubiquitous. Isoform Pin2 predominates

TRF1 / TERF1 Antibody (clone BED5) - Protocols

Provided below are standard protocols that you may find useful for product applications.

- [Western Blot](#)
- [Blocking Peptides](#)
- [Dot Blot](#)
- [Immunohistochemistry](#)
- [Immunofluorescence](#)
- [Immunoprecipitation](#)
- [Flow Cytometry](#)
- [Cell Culture](#)

TRF1 / TERF1 Antibody (clone BED5) - Images

Anti-TRF1 antibody IHC of human uterus.

TRF1 / TERF1 Antibody (clone BED5) - Background

Binds the telomeric double-stranded 5'-TTAGGG-3' repeat and negatively regulates telomere length. Involved in the regulation of the mitotic spindle. Component of the shelterin complex (telosome) that is involved in the regulation of telomere length and protection. Shelterin associates with arrays of double-stranded 5'-TTAGGG-3' repeats added by telomerase and protects chromosome ends; without its protective activity, telomeres are no longer hidden from the DNA damage surveillance and chromosome ends are inappropriately processed by DNA repair pathways.

TRF1 / TERF1 Antibody (clone BED5) - References

Chong L., et al. Science 270:1663-1667(1995).
de Lange T., et al. Submitted (MAY-1997) to the EMBL/GenBank/DDBJ databases.
Broccoli D., et al. Nat. Genet. 17:231-235(1997).

Shen M.,et al.Proc. Natl. Acad. Sci. U.S.A. 94:13618-13623(1997).
Nusbaum C.,et al.Nature 439:331-335(2006).