

**CDH1 / E Cadherin Antibody (aa1-50)**  
**Rabbit Polyclonal Antibody**  
**Catalog # ALS14302****Specification**

---

**CDH1 / E Cadherin Antibody (aa1-50) - Product Information**

Application	IF, WB
Primary Accession	<a href="#">P12830</a>
Reactivity	Human
Host	Rabbit
Clonality	Polyclonal
Calculated MW	97kDa KDa

**CDH1 / E Cadherin Antibody (aa1-50) - Additional Information****Gene ID** 999**Other Names**

Cadherin-1, CAM 120/80, Epithelial cadherin, E-cadherin, Uvomorulin, CD324, E-Cad/CTF1, E-Cad/CTF2, E-Cad/CTF3, CDH1, CDHE, UVO

**Target/Specificity**

E-cadherin Antibody detects endogenous levels of total E-cadherin protein.

**Reconstitution & Storage**

Store at -20°C for up to one year.

**Precautions**

CDH1 / E Cadherin Antibody (aa1-50) is for research use only and not for use in diagnostic or therapeutic procedures.

**CDH1 / E Cadherin Antibody (aa1-50) - Protein Information****Name** CDH1**Synonyms** CDHE, UVO**Function**

Cadherins are calcium-dependent cell adhesion proteins (PubMed:<a href="http://www.uniprot.org/citations/11976333" target="\_blank">11976333</a>). They preferentially interact with themselves in a homophilic manner in connecting cells; cadherins may thus contribute to the sorting of heterogeneous cell types. CDH1 is involved in mechanisms regulating cell-cell adhesions, mobility and proliferation of epithelial cells (PubMed:<a href="http://www.uniprot.org/citations/11976333" target="\_blank">11976333</a>). Has a potent invasive suppressor role. It is a ligand for integrin alpha-E/beta-7.

**Cellular Location**

Cell junction, adherens junction. Cell membrane; Single-pass type I membrane protein. Endosome.

Golgi apparatus, trans-Golgi network. Note=Colocalizes with DLGAP5 at sites of cell-cell contact in intestinal epithelial cells. Anchored to actin microfilaments through association with alpha-, beta- and gamma-catenin. Sequential proteolysis induced by apoptosis or calcium influx, results in translocation from sites of cell-cell contact to the cytoplasm Colocalizes with RAB11A endosomes during its transport from the Golgi apparatus to the plasma membrane

**Tissue Location**

Non-neural epithelial tissues.

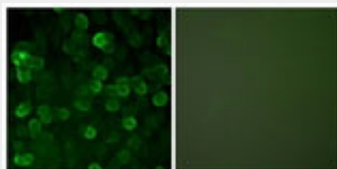
**Volume**

50 µl

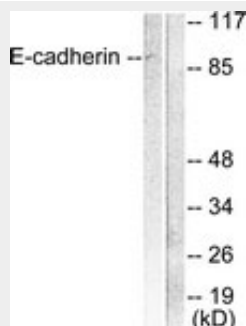
**CDH1 / E Cadherin Antibody (aa1-50) - Protocols**

Provided below are standard protocols that you may find useful for product applications.

- [Western Blot](#)
- [Blocking Peptides](#)
- [Dot Blot](#)
- [Immunohistochemistry](#)
- [Immunofluorescence](#)
- [Immunoprecipitation](#)
- [Flow Cytometry](#)
- [Cell Culture](#)

**CDH1 / E Cadherin Antibody (aa1-50) - Images**

Immunofluorescence of A549 cells, using E-cadherin Antibody.



Western blot of extracts from 293 cells, using E-cadherin Antibody.

**CDH1 / E Cadherin Antibody (aa1-50) - Background**

Cadherins are calcium-dependent cell adhesion proteins. They preferentially interact with themselves in a homophilic manner in connecting cells; cadherins may thus contribute to the sorting of heterogeneous cell types. CDH1 is involved in mechanisms regulating cell-cell adhesions, mobility and proliferation of epithelial cells. Has a potent invasive suppressor role. It is a ligand for integrin alpha-E/beta-7.

**CDH1 / E Cadherin Antibody (aa1-50) - References**

Bussemakers M.J.G.,et al.Mol. Biol. Rep. 17:123-128(1993).  
Oda T.,et al.Proc. Natl. Acad. Sci. U.S.A. 91:1858-1862(1994).  
Rimm D.L.,et al.Biochem. Biophys. Res. Commun. 200:1754-1761(1994).  
Ito K.,et al.Oncogene 18:7080-7090(1999).  
Shibamoto S.,et al.Submitted (MAR-1999) to the EMBL/GenBank/DDBJ databases.