

CST1 / Cystatin SN Antibody (aa31-80)
Rabbit Polyclonal Antibody
Catalog # ALS14303**Specification**

CST1 / Cystatin SN Antibody (aa31-80) - Product Information

Application	IF, IHC
Primary Accession	P01037
Reactivity	Human
Host	Rabbit
Clonality	Polyclonal
Calculated MW	16kDa KDa

CST1 / Cystatin SN Antibody (aa31-80) - Additional Information**Gene ID** 1469**Other Names**

Cystatin-SN, Cystatin-SA-I, Cystatin-1, Salivary cystatin-SA-1, CST1

Target/Specificity

CST1 Antibody detects endogenous levels of total CST1 protein.

Reconstitution & Storage

Store at -20°C for up to one year.

Precautions

CST1 / Cystatin SN Antibody (aa31-80) is for research use only and not for use in diagnostic or therapeutic procedures.

CST1 / Cystatin SN Antibody (aa31-80) - Protein Information**Name** CST1**Function**

Human saliva appears to contain several cysteine proteinase inhibitors that are immunologically related to cystatin S but that differ in their specificity due to amino acid sequence differences. Cystatin SN, with a pI of 7.5, is a much better inhibitor of papain and dipeptidyl peptidase I than is cystatin S, although both inhibit ficin equally well.

Cellular Location

Secreted.

Tissue Location

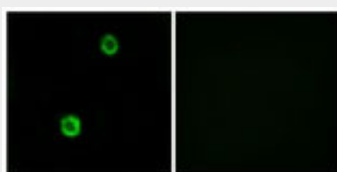
Expressed in submandibular and sublingual saliva but not in parotid saliva (at protein level).
Expressed in saliva, tears, urine and seminal fluid.

CST1 / Cystatin SN Antibody (aa31-80) - Protocols

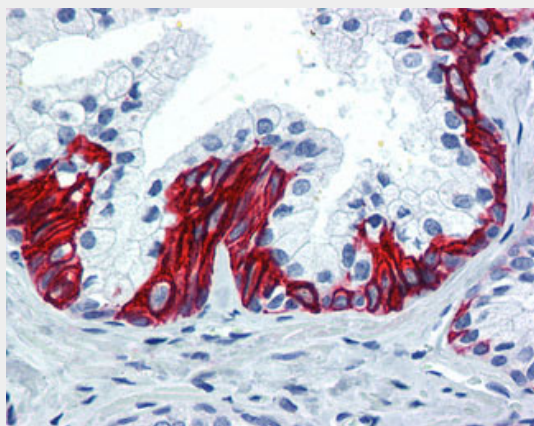
Provided below are standard protocols that you may find useful for product applications.

- [Western Blot](#)
- [Blocking Peptides](#)
- [Dot Blot](#)
- [Immunohistochemistry](#)
- [Immunofluorescence](#)
- [Immunoprecipitation](#)
- [Flow Cytometry](#)
- [Cell Culture](#)

CST1 / Cystatin SN Antibody (aa31-80) - Images



Immunofluorescence of MCF7 cells, using CST1 Antibody.



Anti-CST1 antibody IHC of human prostate.

CST1 / Cystatin SN Antibody (aa31-80) - Background

Human saliva appears to contain several cysteine proteinase inhibitors that are immunologically related to cystatin S but that differ in their specificity due to amino acid sequence differences. Cystatin SN, with a pI of 7.5, is a much better inhibitor of papain and dipeptidyl peptidase I than is cystatin S, although both inhibit ficin equally well.

CST1 / Cystatin SN Antibody (aa31-80) - References

- Saitoh E., et al. Gene 61:329-338(1987).
Al-Hashimi I., et al. J. Biol. Chem. 263:9381-9387(1988).
Deloukas P., et al. Nature 414:865-871(2001).
Saitoh E., et al. Biol. Chem. Hoppe-Seyler 369:191-197(1988).
Isemura S., et al. J. Biochem. 110:648-654(1991).