

SERPING1 / C1 Inhibitor Antibody (clone 3F4-1D9)
Mouse Monoclonal Antibody
Catalog # ALS14314**Specification**

SERPING1 / C1 Inhibitor Antibody (clone 3F4-1D9) - Product Information

Application	WB, IP, IHC
Primary Accession	P05155
Reactivity	Human
Host	Mouse
Clonality	Monoclonal
Calculated MW	55kDa KDa

SERPING1 / C1 Inhibitor Antibody (clone 3F4-1D9) - Additional Information**Gene ID** 710**Other Names**

Plasma protease C1 inhibitor, C1 Inh, C1Inh, C1 esterase inhibitor, C1-inhibiting factor, Serpin G1, SERPING1, C1IN, C1NH

Target/Specificity

Human SERPING1

Reconstitution & Storage

Aliquot and store at -20°C or -80°C. Avoid freeze-thaw cycles.

Precautions

SERPING1 / C1 Inhibitor Antibody (clone 3F4-1D9) is for research use only and not for use in diagnostic or therapeutic procedures.

SERPING1 / C1 Inhibitor Antibody (clone 3F4-1D9) - Protein Information**Name** SERPING1**Synonyms** C1IN, C1NH**Function**

Activation of the C1 complex is under control of the C1- inhibitor. It forms a proteolytically inactive stoichiometric complex with the C1r or C1s proteases. May play a potentially crucial role in regulating important physiological pathways including complement activation, blood coagulation, fibrinolysis and the generation of kinins. Very efficient inhibitor of FXIIa. Inhibits chymotrypsin and kallikrein.

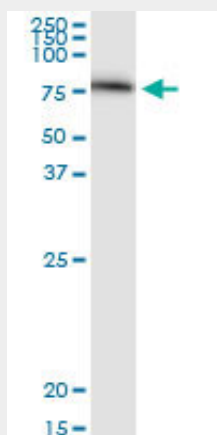
Cellular Location

Secreted.

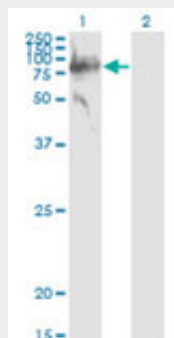
SERPING1 / C1 Inhibitor Antibody (clone 3F4-1D9) - Protocols

Provided below are standard protocols that you may find useful for product applications.

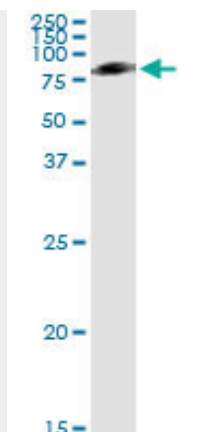
- [Western Blot](#)
- [Blocking Peptides](#)
- [Dot Blot](#)
- [Immunohistochemistry](#)
- [Immunofluorescence](#)
- [Immunoprecipitation](#)
- [Flow Cytometry](#)
- [Cell Culture](#)

SERPING1 / C1 Inhibitor Antibody (clone 3F4-1D9) - Images

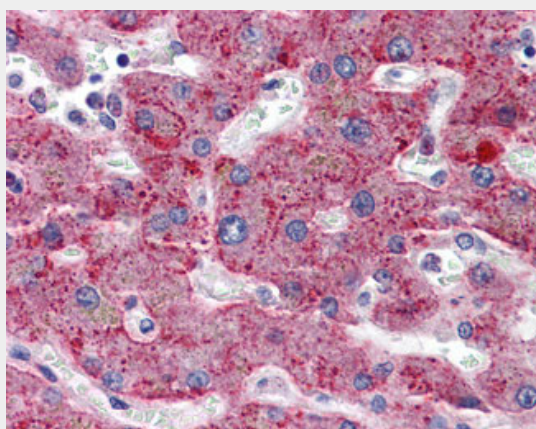
Western blot of SERPING1 expression in human liver.



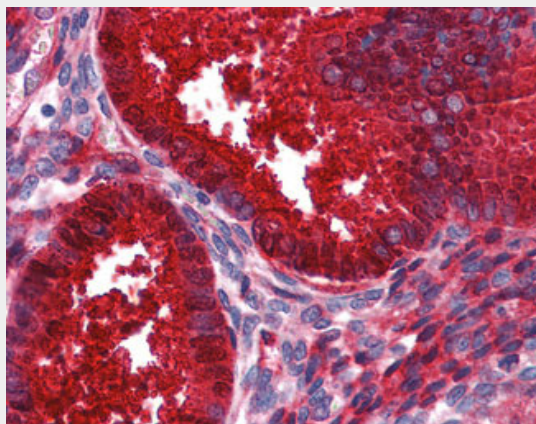
Western blot of SERPING1 expression in transfected 293T cell line.



Immunoprecipitation of SERPING1 transfected lysate using anti-SERPING1 monoclonal antibody and...



Anti-SERPING1 / C1INH antibody IHC of human liver.



Anti-SERPING1 / C1INH antibody IHC of human uterus.

SERPING1 / C1 Inhibitor Antibody (clone 3F4-1D9) - Background

Activation of the C1 complex is under control of the C1- inhibitor. It forms a proteolytically inactive stoichiometric complex with the C1r or C1s proteases. May play a potentially crucial role in regulating important physiological pathways including complement activation, blood coagulation, fibrinolysis and the generation of kinins. Very efficient inhibitor of FXIIa. Inhibits chymotrypsin and kallikrein.

SERPING1 / C1 Inhibitor Antibody (clone 3F4-1D9) - References

Que B.G.,et al.Biochem. Biophys. Res. Commun. 137:620-625(1986).
Bock S.C.,et al.Biochemistry 25:4292-4301(1986).
Carter P.E.,et al.Eur. J. Biochem. 173:163-169(1988).
Carter P.E.,et al.Eur. J. Biochem. 197:301-308(1991).
Heus J.,et al.Submitted (OCT-2001) to the EMBL/GenBank/DDBJ databases.