

CDH17 / Cadherin 17 Antibody (clone 3H2)
Mouse Monoclonal Antibody
Catalog # ALS14325**Specification**

CDH17 / Cadherin 17 Antibody (clone 3H2) - Product Information

Application	IHC
Primary Accession	Q12864
Reactivity	Human
Host	Mouse
Clonality	Monoclonal
Calculated MW	92kDa KDa

CDH17 / Cadherin 17 Antibody (clone 3H2) - Additional Information**Gene ID** 1015**Other Names**

Cadherin-17, Intestinal peptide-associated transporter HPT-1, Liver-intestine cadherin, LI-cadherin, CDH17

Target/Specificity

Human CDH17

Reconstitution & Storage

Aliquot and store at -20°C or -80°C. Avoid freeze-thaw cycles.

Precautions

CDH17 / Cadherin 17 Antibody (clone 3H2) is for research use only and not for use in diagnostic or therapeutic procedures.

CDH17 / Cadherin 17 Antibody (clone 3H2) - Protein Information**Name** CDH17**Function**

Cadherins are calcium-dependent cell adhesion proteins. They preferentially interact with themselves in a homophilic manner in connecting cells; cadherins may thus contribute to the sorting of heterogeneous cell types. LI-cadherin may have a role in the morphological organization of liver and intestine. Involved in intestinal peptide transport.

Cellular Location

Cell membrane; Single-pass type I membrane protein

Tissue Location

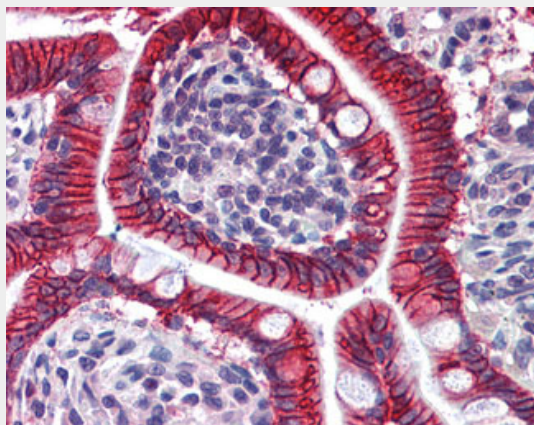
Expressed in the gastrointestinal tract and pancreatic duct. Not detected in kidney, lung, liver, brain, adrenal gland and skin.

CDH17 / Cadherin 17 Antibody (clone 3H2) - Protocols

Provided below are standard protocols that you may find useful for product applications.

- [Western Blot](#)
- [Blocking Peptides](#)
- [Dot Blot](#)
- [Immunohistochemistry](#)
- [Immunofluorescence](#)
- [Immunoprecipitation](#)
- [Flow Cytometry](#)
- [Cell Culture](#)

CDH17 / Cadherin 17 Antibody (clone 3H2) - Images



Anti-CDH17 / LI Cadherin antibody IHC of human small intestine.

CDH17 / Cadherin 17 Antibody (clone 3H2) - Background

Cadherins are calcium-dependent cell adhesion proteins. They preferentially interact with themselves in a homophilic manner in connecting cells; cadherins may thus contribute to the sorting of heterogeneous cell types. LI-cadherin may have a role in the morphological organization of liver and intestine. Involved in intestinal peptide transport.

CDH17 / Cadherin 17 Antibody (clone 3H2) - References

Dantzig A.H., et al. Science 264:430-433(1994).
Boettinger A., et al. Submitted (DEC-1994) to the EMBL/GenBank/DDBJ databases.
Nusbaum C., et al. Nature 439:331-335(2006).