

**CREB1 / CREB Antibody (clone 5F2)**  
**Mouse Monoclonal Antibody**  
**Catalog # ALS14328****Specification**

---

**CREB1 / CREB Antibody (clone 5F2) - Product Information**

Application	WB, IHC
Primary Accession	<a href="#">P16220</a>
Reactivity	Human
Host	Mouse
Clonality	Monoclonal
Calculated MW	37kDa KDa

**CREB1 / CREB Antibody (clone 5F2) - Additional Information****Gene ID** 1385**Other Names**

Cyclic AMP-responsive element-binding protein 1, CREB-1, cAMP-responsive element-binding protein 1, CREB1

**Target/Specificity**

Human CREB1

**Reconstitution & Storage**

Aliquot and store at -20°C or -80°C. Avoid freeze-thaw cycles.

**Precautions**

CREB1 / CREB Antibody (clone 5F2) is for research use only and not for use in diagnostic or therapeutic procedures.

**CREB1 / CREB Antibody (clone 5F2) - Protein Information****Name** CREB1**Function**

Phosphorylation-dependent transcription factor that stimulates transcription upon binding to the DNA cAMP response element (CRE), a sequence present in many viral and cellular promoters (By similarity). Transcription activation is enhanced by the TORC coactivators which act independently of Ser-119 phosphorylation (PubMed:<a href="http://www.uniprot.org/citations/14536081" target="\_blank">14536081</a>). Involved in different cellular processes including the synchronization of circadian rhythmicity and the differentiation of adipose cells (By similarity). Regulates the expression of apoptotic and inflammatory response factors in cardiomyocytes in response to ERFE-mediated activation of AKT signaling (By similarity).

**Cellular Location**

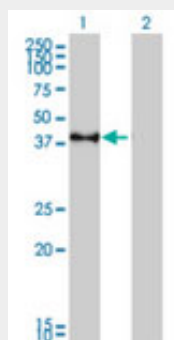
Nucleus {ECO:0000255|PROSITE-ProRule:PRU00312, ECO:0000255|PROSITE-ProRule:PRU00978, ECO:0000269|PubMed:12552083}

## CREB1 / CREB Antibody (clone 5F2) - Protocols

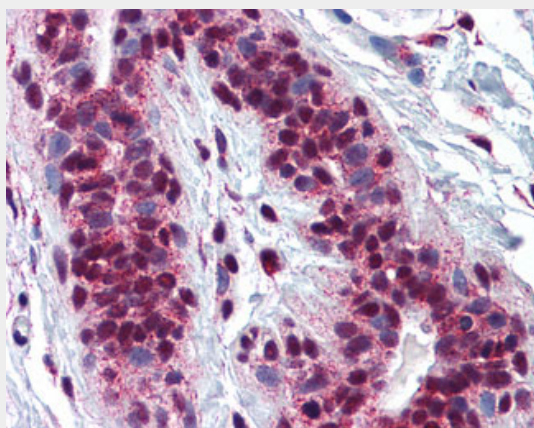
Provided below are standard protocols that you may find useful for product applications.

- [Western Blot](#)
- [Blocking Peptides](#)
- [Dot Blot](#)
- [Immunohistochemistry](#)
- [Immunofluorescence](#)
- [Immunoprecipitation](#)
- [Flow Cytometry](#)
- [Cell Culture](#)

## CREB1 / CREB Antibody (clone 5F2) - Images



Western blot of CREB1 expression in transfected 293T cell line.



Anti-CREB1 / CREB antibody IHC of human breast.

## CREB1 / CREB Antibody (clone 5F2) - Background

Phosphorylation-dependent transcription factor that stimulates transcription upon binding to the DNA cAMP response element (CRE), a sequence present in many viral and cellular promoters. Transcription activation is enhanced by the TORC coactivators which act independently of Ser-133 phosphorylation. Involved in different cellular processes including the synchronization of circadian rhythmicity and the differentiation of adipose cells.

## CREB1 / CREB Antibody (clone 5F2) - References

Berkowitz L.A., et al. Proc. Natl. Acad. Sci. U.S.A. 87:5258-5262(1990).

Yoshimura T.,et al.EMBO J. 9:2537-2542(1990).  
Waeber G.,et al.Trans. Assoc. Am. Physicians 103:28-37(1990).  
Hoeffler J.P.,et al.Science 242:1430-1433(1988).  
Short M.L.,et al.Nucleic Acids Res. 19:4290-4290(1991).