

**JUP/CTNNG/Junction Plakoglobin Antibody (aa696-745)**  
**Rabbit Polyclonal Antibody**  
**Catalog # ALS14341****Specification**

---

**JUP/CTNNG/Junction Plakoglobin Antibody (aa696-745) - Product Information**

Application	WB, IHC
Primary Accession	<a href="#">P14923</a>
Reactivity	Human, Mouse, Rat
Host	Rabbit
Clonality	Polyclonal
Calculated MW	82kDa KDa

**JUP/CTNNG/Junction Plakoglobin Antibody (aa696-745) - Additional Information****Gene ID** 3728**Other Names**

Junction plakoglobin, Catenin gamma, Desmoplakin III, Desmoplakin-3, JUP, CTNNG, DP3

**Target/Specificity**

Catenin-gamma Antibody detects endogenous levels of total Catenin-gamma protein.

**Reconstitution & Storage**

Long term: -20°C; Short term: +4°C; Avoid freeze-thaw cycles.

**Precautions**

JUP/CTNNG/Junction Plakoglobin Antibody (aa696-745) is for research use only and not for use in diagnostic or therapeutic procedures.

**JUP/CTNNG/Junction Plakoglobin Antibody (aa696-745) - Protein Information****Name** JUP ([HGNC:6207](#))**Function**

Common junctional plaque protein. The membrane-associated plaques are architectural elements in an important strategic position to influence the arrangement and function of both the cytoskeleton and the cells within the tissue. The presence of plakoglobin in both the desmosomes and in the intermediate junctions suggests that it plays a central role in the structure and function of submembranous plaques. Acts as a substrate for VE-PTP and is required by it to stimulate VE-cadherin function in endothelial cells. Can replace beta-catenin in E-cadherin/catenin adhesion complexes which are proposed to couple cadherins to the actin cytoskeleton (By similarity).

**Cellular Location**

Cell junction, adherens junction. Cell junction, desmosome. Cytoplasm, cytoskeleton. Membrane; Peripheral membrane protein. Note=Cytoplasmic in a soluble and membrane-associated form

**Tissue Location**

Expressed in the heart (at protein level).

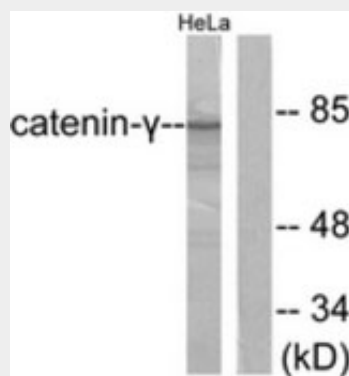
**Volume**

50 µl

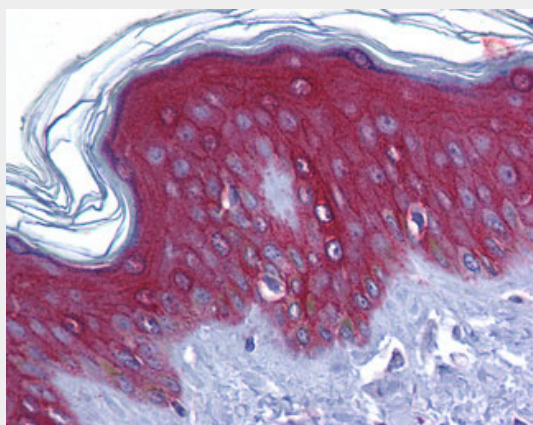
**JUP/CTNNG/Junction Plakoglobin Antibody (aa696-745) - Protocols**

Provided below are standard protocols that you may find useful for product applications.

- [Western Blot](#)
- [Blocking Peptides](#)
- [Dot Blot](#)
- [Immunohistochemistry](#)
- [Immunofluorescence](#)
- [Immunoprecipitation](#)
- [Flow Cytometry](#)
- [Cell Culture](#)

**JUP/CTNNG/Junction Plakoglobin Antibody (aa696-745) - Images**

Western blot of extracts from HeLa cells, using Catenin-gamma Antibody.



Anti-Gamma Catenin antibody IHC of human skin.

**JUP/CTNNG/Junction Plakoglobin Antibody (aa696-745) - Background**

Common junctional plaque protein. The membrane-associated plaques are architectural elements in an important strategic position to influence the arrangement and function of both the cytoskeleton and the cells within the tissue. The presence of plakoglobin in both the desmosomes

and in the intermediate junctions suggests that it plays a central role in the structure and function of submembranous plaques. Acts as a substrate for VE-PTP and is required by it to stimulate VE-cadherin function in endothelial cells. Can replace beta-catenin in E-cadherin/catenin adhesion complexes which are proposed to couple cadherins to the actin cytoskeleton (By similarity).

#### **JUP/CTNNG/Junction Plakoglobin Antibody (aa696-745) - References**

Franke W.W.,et al.Proc. Natl. Acad. Sci. U.S.A. 86:4027-4031(1989).  
Zimbelmann R.,et al.Submitted (DEC-1995) to the EMBL/GenBank/DDBJ databases.  
Whitlock N.V.,et al.Exp. Dermatol. 9:323-326(2000).  
Liang X.-J.,et al.Submitted (FEB-2003) to the EMBL/GenBank/DDBJ databases.  
Zody M.C.,et al.Nature 440:1045-1049(2006).