

**CD44 Antibody (clone 8E2F3)**  
**Mouse Monoclonal Antibody**  
**Catalog # ALS14344****Specification**

---

**CD44 Antibody (clone 8E2F3) - Product Information**

Application	IF, IHC
Primary Accession	<a href="#">P16070</a>
Reactivity	Human, Mouse
Host	Mouse
Clonality	Monoclonal
Calculated MW	82kDa KDa

**CD44 Antibody (clone 8E2F3) - Additional Information****Gene ID** 960**Other Names**

CD44 antigen, CDw44, Epican, Extracellular matrix receptor III, ECMR-III, GP90 lymphocyte homing/adhesion receptor, HUTCH-I, Heparan sulfate proteoglycan, Hermes antigen, Hyaluronate receptor, Phagocytic glycoprotein 1, PGP-1, Phagocytic glycoprotein I, PGP-I, CD44, CD44, LHR, MDU2, MDU3, MIC4

**Target/Specificity**

human CD44

**Reconstitution & Storage**

Long term: -20°C; Short term: +4°C. Avoid repeat freeze-thaw cycles.

**Precautions**

CD44 Antibody (clone 8E2F3) is for research use only and not for use in diagnostic or therapeutic procedures.

**CD44 Antibody (clone 8E2F3) - Protein Information****Name** CD44**Synonyms** LHR, MDU2, MDU3, MIC4**Function**

Cell-surface receptor that plays a role in cell-cell interactions, cell adhesion and migration, helping them to sense and respond to changes in the tissue microenvironment (PubMed:<a href="http://www.uniprot.org/citations/16541107" target="\_blank">16541107</a>, PubMed:<a href="http://www.uniprot.org/citations/19703720" target="\_blank">19703720</a>, PubMed:<a href="http://www.uniprot.org/citations/22726066" target="\_blank">22726066</a>). Participates thereby in a wide variety of cellular functions including the activation, recirculation and homing of T-lymphocytes, hematopoiesis, inflammation and response to bacterial infection (PubMed:<a href="http://www.uniprot.org/citations/7528188" target="\_blank">7528188</a>). Engages,

through its ectodomain, extracellular matrix components such as hyaluronan/HA, collagen, growth factors, cytokines or proteases and serves as a platform for signal transduction by assembling, via its cytoplasmic domain, protein complexes containing receptor kinases and membrane proteases (PubMed:<a href="http://www.uniprot.org/citations/18757307" target="\_blank">18757307</a>, PubMed:<a href="http://www.uniprot.org/citations/23589287" target="\_blank">23589287</a>). Such effectors include PKN2, the RhoGTPases RAC1 and RHOA, Rho-kinases and phospholipase C that coordinate signaling pathways promoting calcium mobilization and actin-mediated cytoskeleton reorganization essential for cell migration and adhesion (PubMed:<a href="http://www.uniprot.org/citations/15123640" target="\_blank">15123640</a>).

#### Cellular Location

Cell membrane; Single-pass type I membrane protein. Cell projection, microvillus {ECO:0000250|UniProtKB:P15379}. Secreted Note=Colocalizes with actin in membrane protrusions at wounding edges Co-localizes with RDX, EZR and MSN in microvilli. Localizes to cholesterol-rich membrane-bound lipid raft domains {ECO:0000250|UniProtKB:P15379, ECO:0000269|PubMed:23589287}

#### Tissue Location

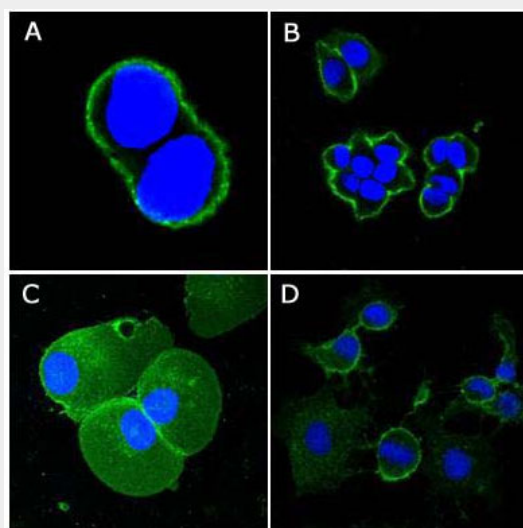
Detected in fibroblasts and urine (at protein level) (PubMed:25326458, PubMed:36213313, PubMed:37453717). Detected in placenta (at protein level) (PubMed:32337544). Isoform 10 (epithelial isoform) is expressed by cells of epithelium and highly expressed by carcinomas. Expression is repressed in neuroblastoma cells

#### CD44 Antibody (clone 8E2F3) - Protocols

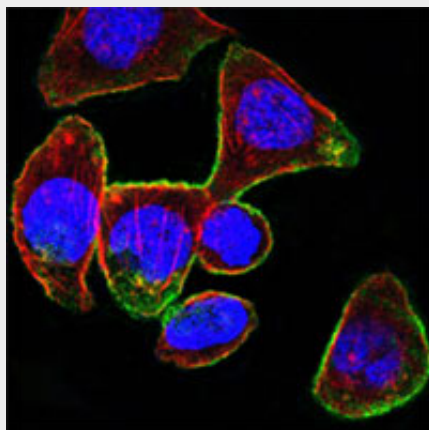
Provided below are standard protocols that you may find useful for product applications.

- [Western Blot](#)
- [Blocking Peptides](#)
- [Dot Blot](#)
- [Immunohistochemistry](#)
- [Immunofluorescence](#)
- [Immunoprecipitation](#)
- [Flow Cytometry](#)
- [Cell Culture](#)

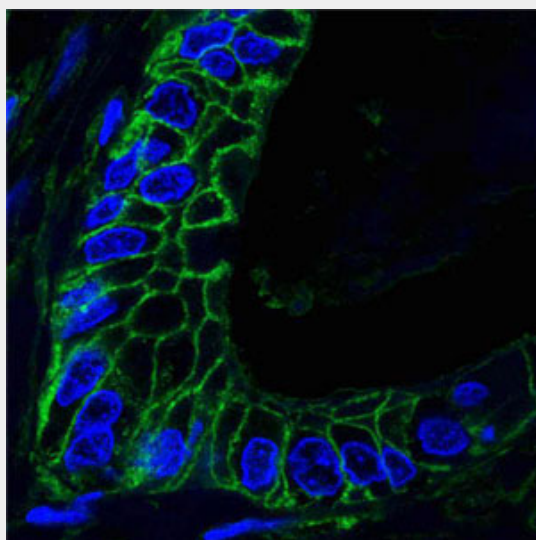
#### CD44 Antibody (clone 8E2F3) - Images



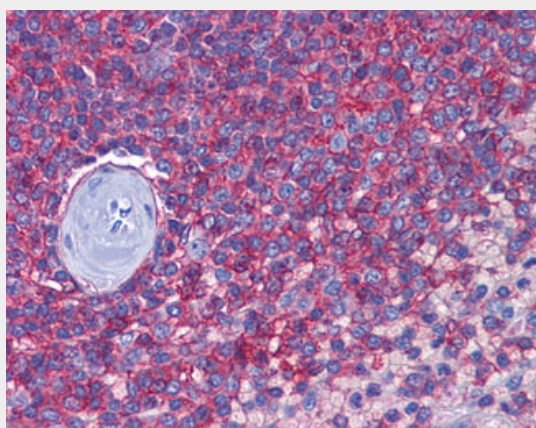
Confocal immunofluorescence of methanol-fixed A431 (A), HeLa (B), PANC-1 (C) and EC (D) cells...



Confocal immunofluorescence of PANC-1 cells using CD44 mouse monoclonal antibody (green).



Confocal analysis of paraffin-embedded human lung cancer tissues using CD44 mouse monoclonal...



Anti-CD44 antibody IHC of human spleen.

#### **CD44 Antibody (clone 8E2F3) - Background**

Receptor for hyaluronic acid (HA). Mediates cell-cell and cell-matrix interactions through its affinity

for HA, and possibly also through its affinity for other ligands such as osteopontin, collagens, and matrix metalloproteinases (MMPs). Adhesion with HA plays an important role in cell migration, tumor growth and progression. In cancer cells, may play an important role in invadopodia formation. Also involved in lymphocyte activation, recirculation and homing, and in hematopoiesis. Altered expression or dysfunction causes numerous pathogenic phenotypes. Great protein heterogeneity due to numerous alternative splicing and post-translational modification events.

#### **CD44 Antibody (clone 8E2F3) - References**

Stamenkovic I., et al. Cell 56:1057-1062(1989).  
Harn H.-J., et al. Biochem. Biophys. Res. Commun. 178:1127-1134(1991).  
Stamenkovic I., et al. EMBO J. 10:343-348(1991).  
Dougherty G.J., et al. J. Exp. Med. 174:1-5(1991).  
Kugelman L.C., et al. J. Invest. Dermatol. 99:886-891(1992).