

CTSD / Cathepsin D Antibody (clone 3F12-1B9)
Mouse Monoclonal Antibody
Catalog # ALS14362**Specification**

CTSD / Cathepsin D Antibody (clone 3F12-1B9) - Product Information

| | |
|-------------------|------------------------|
| Application | WB, IP, IHC |
| Primary Accession | P07339 |
| Reactivity | Human |
| Host | Mouse |
| Clonality | Monoclonal |
| Calculated MW | 45kDa KDa |

CTSD / Cathepsin D Antibody (clone 3F12-1B9) - Additional Information**Gene ID** 1509**Other Names**

Cathepsin D, 3.4.23.5, Cathepsin D light chain, Cathepsin D heavy chain, CTSD, CPSD

Target/Specificity

Human Cathepsin D

Reconstitution & Storage

Aliquot and store at -20°C or -80°C. Avoid freeze-thaw cycles.

Precautions

CTSD / Cathepsin D Antibody (clone 3F12-1B9) is for research use only and not for use in diagnostic or therapeutic procedures.

CTSD / Cathepsin D Antibody (clone 3F12-1B9) - Protein Information**Name** CTSD**Synonyms** CPSD**Function**

Acid protease active in intracellular protein breakdown. Plays a role in APP processing following cleavage and activation by ADAM30 which leads to APP degradation (PubMed:27333034). Involved in the pathogenesis of several diseases such as breast cancer and possibly Alzheimer disease.

Cellular Location

Lysosome. Melanosome. Secreted, extracellular space. Note=Identified by mass spectrometry in melanosome fractions from stage I to stage IV. In aortic samples, detected as an extracellular protein loosely bound to the matrix (PubMed:20551380)

Tissue Location

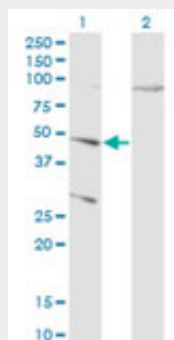
Expressed in the aorta extracellular space (at protein level) (PubMed:20551380). Expressed in liver (at protein level) (PubMed:1426530).

CTSD / Cathepsin D Antibody (clone 3F12-1B9) - Protocols

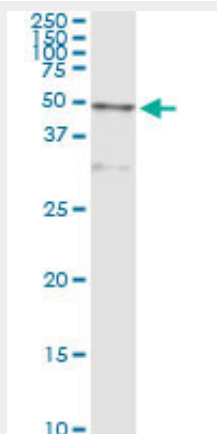
Provided below are standard protocols that you may find useful for product applications.

- [Western Blot](#)
- [Blocking Peptides](#)
- [Dot Blot](#)
- [Immunohistochemistry](#)
- [Immunofluorescence](#)
- [Immunoprecipitation](#)
- [Flow Cytometry](#)
- [Cell Culture](#)

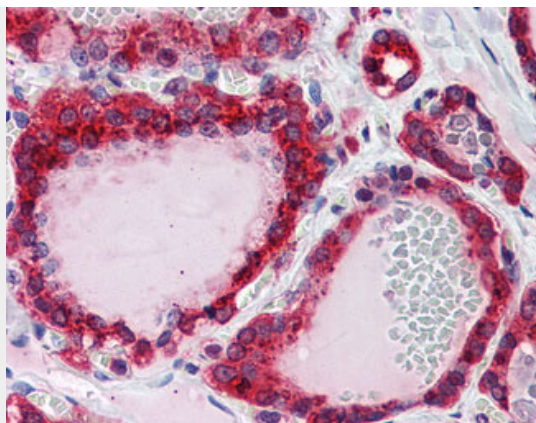
CTSD / Cathepsin D Antibody (clone 3F12-1B9) - Images



Western blot of CTSD expression in transfected 293T cell line by CTSD antibody.



Immunoprecipitation of CTSD transfected lysate using anti-CTSD monoclonal antibody and Protein A...



Anti-Cathepsin D antibody IHC of human thyroid.

CTSD / Cathepsin D Antibody (clone 3F12-1B9) - Background

Acid protease active in intracellular protein breakdown. Involved in the pathogenesis of several diseases such as breast cancer and possibly Alzheimer disease.

CTSD / Cathepsin D Antibody (clone 3F12-1B9) - References

Faust P.L., et al. Proc. Natl. Acad. Sci. U.S.A. 82:4910-4914(1985).
Westley B.R., et al. Nucleic Acids Res. 15:3773-3786(1987).
Redecker B., et al. DNA Cell Biol. 10:423-431(1991).
Ebert L., et al. Submitted (JUN-2004) to the EMBL/GenBank/DDBJ databases.
Kalnine N., et al. Submitted (OCT-2004) to the EMBL/GenBank/DDBJ databases.