

TMEPAI / PMEPA1 Antibody (aa101-150)
Rabbit Polyclonal Antibody
Catalog # ALS14476**Specification**

TMEPAI / PMEPA1 Antibody (aa101-150) - Product Information

Application	IF
Primary Accession	O969W9
Reactivity	Human
Host	Rabbit
Clonality	Polyclonal
Calculated MW	32kDa KDa

TMEPAI / PMEPA1 Antibody (aa101-150) - Additional Information**Gene ID** 56937**Other Names**

Protein TMEPAI, Prostate transmembrane protein androgen induced 1, Solid tumor-associated 1 protein, Transmembrane prostate androgen-induced protein, PMEPA1, STAG1, TMEPAI

Target/Specificity

TMEPA Antibody detects endogenous levels of total TMEPA protein.

Reconstitution & Storage

Short term 4°C, long term aliquot and store at -20°C, avoid freeze thaw cycles.

Precautions

TMEPAI / PMEPA1 Antibody (aa101-150) is for research use only and not for use in diagnostic or therapeutic procedures.

TMEPAI / PMEPA1 Antibody (aa101-150) - Protein Information**Name** PMEPA1**Synonyms** STAG1, TMEPAI**Function**

Functions as a negative regulator of TGF-beta signaling and thereby probably plays a role in cell proliferation, differentiation, apoptosis, motility, extracellular matrix production and immunosuppression. In the canonical TGF-beta pathway, ZFYVE9/SARA recruits the intracellular signal transducer and transcriptional modulators SMAD2 and SMAD3 to the TGF-beta receptor. Phosphorylated by the receptor, SMAD2 and SMAD3 then form a heteromeric complex with SMAD4 that translocates to the nucleus to regulate transcription. Through interaction with SMAD2 and SMAD3, LDLRAD4 may compete with ZFYVE9 and SMAD4 and prevent propagation of the intracellular signal (PubMed:20129061, PubMed:24627487). Also involved in down-regulation of the androgen receptor (AR),

enhancing ubiquitination and proteasome-mediated degradation of AR, probably by recruiting NEDD4 (PubMed:18703514).

Cellular Location

Early endosome membrane; Single-pass membrane protein. Golgi apparatus membrane; Single-pass membrane protein

Tissue Location

Highest expression in prostate. Also expressed in ovary

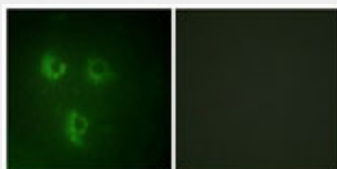
Volume

50 µl

TMEPAI / PMEPA1 Antibody (aa101-150) - Protocols

Provided below are standard protocols that you may find useful for product applications.

- [Western Blot](#)
- [Blocking Peptides](#)
- [Dot Blot](#)
- [Immunohistochemistry](#)
- [Immunofluorescence](#)
- [Immunoprecipitation](#)
- [Flow Cytometry](#)
- [Cell Culture](#)

TMEPAI / PMEPA1 Antibody (aa101-150) - Images

Immunofluorescence of HUVEC cells, using TMEPA Antibody.

TMEPAI / PMEPA1 Antibody (aa101-150) - Background

Functions as a negative regulator of TGF-beta signaling and thereby probably plays a role in cell proliferation, differentiation, apoptosis, motility, extracellular matrix production and immunosuppression. In the canonical TGF-beta pathway, ZFYVE9/SARA recruits the intracellular signal transducer and transcriptional modulators SMAD2 and SMAD3 to the TGF-beta receptor. Phosphorylated by the receptor, SMAD2 and SMAD3 then form a heteromeric complex with SMAD4 that translocates to the nucleus to regulate transcription. Through interaction with SMAD2 and SMAD3, LDLRAD4 may compete with ZFYVE9 and SMAD4 and prevent propagation of the intracellular signal (PubMed:20129061, PubMed:24627487). Also involved in down-regulation of the androgen receptor (AR), enhancing ubiquitination and proteasome-mediated degradation of AR, probably by recruiting NEDD4 (PubMed:18703514).

TMEPAI / PMEPA1 Antibody (aa101-150) - References

Xu L.L.,et al.Genomics 66:257-263(2000).
Rae F.K.,et al.Mol. Carcinog. 32:44-53(2001).

Brunschwig E.B.,et al.Cancer Res. 63:1568-1575(2003).

Deloukas P.,et al.Nature 414:865-871(2001).

Mural R.J.,et al.Submitted (SEP-2005) to the EMBL/GenBank/DDBJ databases.