

**PRUNE Antibody (clone 1C11)**  
**Mouse Monoclonal Antibody**  
**Catalog # ALS14521****Specification**

---

**PRUNE Antibody (clone 1C11) - Product Information**

Application	WB, IHC
Primary Accession	<a href="#">Q86TP1</a>
Reactivity	Human
Host	Mouse
Clonality	Monoclonal
Calculated MW	50kDa KDa

**PRUNE Antibody (clone 1C11) - Additional Information****Gene ID** 58497**Other Names**

Protein prune homolog, hPrune, 3.6.1.1, Drosophila-related expressed sequence 17, DRES-17, DRES17, HTcD37, PRUNE

**Target/Specificity**

Human PRUNE

**Reconstitution & Storage**

Short term 4°C, long term aliquot and store at -20°C, avoid freeze thaw cycles.

**Precautions**

PRUNE Antibody (clone 1C11) is for research use only and not for use in diagnostic or therapeutic procedures.

**PRUNE Antibody (clone 1C11) - Protein Information****Name** PRUNE1 ([HGNC:13420](#))**Synonyms** PRUNE**Function**

Phosphodiesterase (PDE) that has higher activity toward cAMP than cGMP, as substrate. Plays a role in cell proliferation, migration and differentiation, and acts as a negative regulator of NME1. Plays a role in the regulation of neurogenesis (PubMed:<a href="http://www.uniprot.org/citations/28334956" target="\_blank">28334956</a>). Involved in the regulation of microtubule polymerization (PubMed:<a href="http://www.uniprot.org/citations/28334956" target="\_blank">28334956</a>).

**Cellular Location**

Cytoplasm. Nucleus. Cell junction, focal adhesion. Note=In some transfected cells a nuclear staining is also observed

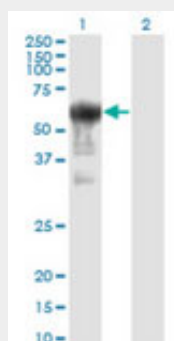
**Tissue Location**

Ubiquitously expressed. Seems to be overexpressed in aggressive sarcoma subtypes, such as leiomyosarcomas and malignant fibrous histiocytoomas (MFH) as well as in the less malignant liposarcomas.

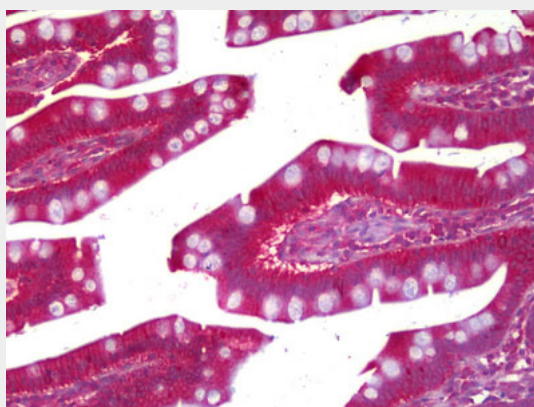
**PRUNE Antibody (clone 1C11) - Protocols**

Provided below are standard protocols that you may find useful for product applications.

- [Western Blot](#)
- [Blocking Peptides](#)
- [Dot Blot](#)
- [Immunohistochemistry](#)
- [Immunofluorescence](#)
- [Immunoprecipitation](#)
- [Flow Cytometry](#)
- [Cell Culture](#)

**PRUNE Antibody (clone 1C11) - Images**

Western blot of PRUNE expression in transfected 293T cell line by PRUNE monoclonal antibody,...



Anti-PRUNE antibody IHC of human small intestine.

**PRUNE Antibody (clone 1C11) - Background**

Phosphodiesterase (PDE) that has higher activity toward cAMP than cGMP, as substrate. Plays a role in cell proliferation, is able to induce cell motility and acts as a negative regulator of NME1.

**PRUNE Antibody (clone 1C11) - References**

Reymond A.,et al.Oncogene 18:7244-7252(1999).  
Zollo M.,et al.Submitted (JAN-1999) to the EMBL/GenBank/DDBJ databases.  
Ota T.,et al.Nat. Genet. 36:40-45(2004).  
Gregory S.G.,et al.Nature 441:315-321(2006).  
Mural R.J.,et al.Submitted (SEP-2005) to the EMBL/GenBank/DDBJ databases.