

**CAMKV Antibody (aa211-260)**  
**Rabbit Polyclonal Antibody**  
**Catalog # ALS14637****Specification**

---

**CAMKV Antibody (aa211-260) - Product Information**

Application	IF, WB, IHC
Primary Accession	<a href="#">O8NCB2</a>
Reactivity	Human, Mouse, Rat
Host	Rabbit
Clonality	Polyclonal
Calculated MW	54kDa KDa

**CAMKV Antibody (aa211-260) - Additional Information****Gene ID** 79012**Other Names**

CaM kinase-like vesicle-associated protein, CAMKV

**Target/Specificity**

CAMK5 Antibody detects endogenous levels of total CAMK5 protein.

**Reconstitution & Storage**

Short term 4°C, long term aliquot and store at -20°C, avoid freeze thaw cycles.

**Precautions**

CAMKV Antibody (aa211-260) is for research use only and not for use in diagnostic or therapeutic procedures.

**CAMKV Antibody (aa211-260) - Protein Information****Name** CAMKV**Function**

Does not appear to have detectable kinase activity.

**Cellular Location**

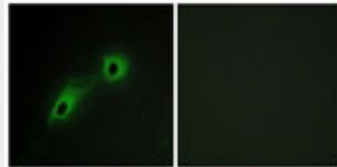
Cell membrane; Peripheral membrane protein. Cytoplasmic vesicle membrane; Peripheral membrane protein. Note=Predominantly observed in association with the plasma membrane of soma and in neurites, both axons and dendrites. May be associated with vesicular structures (By similarity).

**CAMKV Antibody (aa211-260) - Protocols**

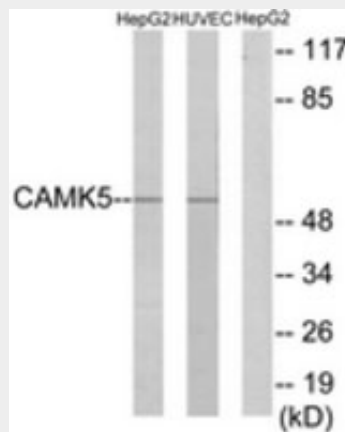
Provided below are standard protocols that you may find useful for product applications.

- [Western Blot](#)
- [Blocking Peptides](#)
- [Dot Blot](#)
- [Immunohistochemistry](#)
- [Immunofluorescence](#)
- [Immunoprecipitation](#)
- [Flow Cytometry](#)
- [Cell Culture](#)

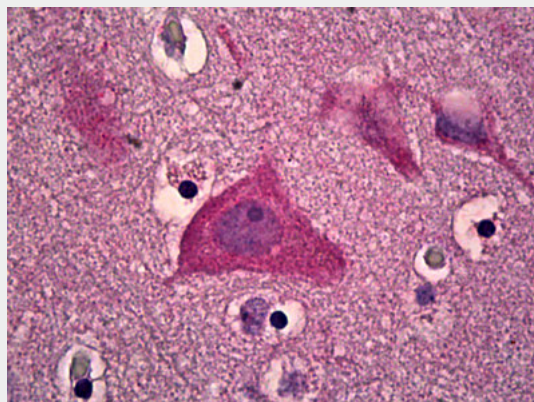
### CAMKV Antibody (aa211-260) - Images



Immunofluorescence of HeLa cells, using CAMK5 Antibody.



Western blot of extracts from HepG2/HUVEC cells, using CAMK5 Antibody.



Anti-CAMKV antibody IHC of human brain, cortex.

### CAMKV Antibody (aa211-260) - Background

Does not appear to have detectable kinase activity.

### CAMKV Antibody (aa211-260) - References

Ota T., et al. Nat. Genet. 36:40-45(2004).  
Wiemann S., et al. Genome Res. 11:422-435(2001).  
Ebert L., et al. Submitted (JUN-2004) to the EMBL/GenBank/DDBJ databases.  
Bechtel S., et al. BMC Genomics 8:399-399(2007).  
Muzny D.M., et al. Nature 440:1194-1198(2006).