

**TRPC4 Antibody (aa930-947, clone S77-15)**  
**Mouse Monoclonal Antibody**  
**Catalog # ALS14654****Specification**

---

**TRPC4 Antibody (aa930-947, clone S77-15) - Product Information**

|                   |                        |
|-------------------|------------------------|
| Application       | IF                     |
| Primary Accession | <a href="#">Q9UBN4</a> |
| Reactivity        | Human, Mouse, Rat      |
| Host              | Mouse                  |
| Clonality         | Monoclonal             |
| Calculated MW     | 112kDa KDa             |

**TRPC4 Antibody (aa930-947, clone S77-15) - Additional Information****Gene ID** 7223**Other Names**

Short transient receptor potential channel 4, TrpC4, Trp-related protein 4, hTrp-4, hTrp4, TRPC4

**Target/Specificity**

Detects ~110 kD protein.

**Reconstitution & Storage**

Short term 4°C, long term aliquot and store at -20°C, avoid freeze thaw cycles.

**Precautions**

TRPC4 Antibody (aa930-947, clone S77-15) is for research use only and not for use in diagnostic or therapeutic procedures.

**TRPC4 Antibody (aa930-947, clone S77-15) - Protein Information****Name** TRPC4**Function**

Forms a receptor-activated non-selective calcium permeant cation channel. Acts as a cell-cell contact-dependent endothelial calcium entry channel. Probably operated by a phosphatidylinositol second messenger system activated by receptor tyrosine kinases or G- protein coupled receptors. Mediates cation entry, with an enhanced permeability to barium over calcium. May also be activated by intracellular calcium store depletion.

**Cellular Location**

Membrane; Multi-pass membrane protein. Cell membrane; Multi-pass membrane protein.  
Note=Enhanced insertion into the cell membrane after activation of the EGF receptor

**Tissue Location**

Strongly expressed in placenta. Expressed at lower levels in heart, pancreas, kidney and brain. Expressed in endothelial cells. Isoform alpha was found to be the predominant isoform. Isoform

beta was not found in pancreas and brain

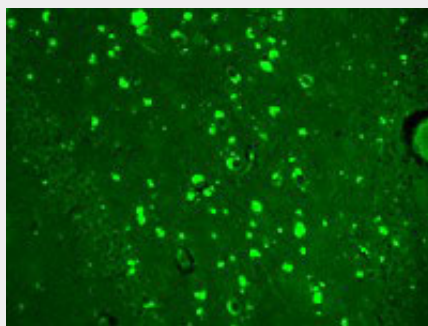
**Volume**  
50 µl

#### **TRPC4 Antibody (aa930-947, clone S77-15) - Protocols**

Provided below are standard protocols that you may find useful for product applications.

- [Western Blot](#)
- [Blocking Peptides](#)
- [Dot Blot](#)
- [Immunohistochemistry](#)
- [Immunofluorescence](#)
- [Immunoprecipitation](#)
- [Flow Cytometry](#)
- [Cell Culture](#)

#### **TRPC4 Antibody (aa930-947, clone S77-15) - Images**



TrpC4 (S77-15), Human hippocampus.

#### **TRPC4 Antibody (aa930-947, clone S77-15) - Background**

Form a receptor-activated non-selective calcium permeant cation channel. Acts as a cell-cell contact-dependent endothelial calcium entry channel. Probably operated by a phosphatidylinositol second messenger system activated by receptor tyrosine kinases or G-protein coupled receptors. Mediates cation entry, with an enhanced permeability to barium over calcium. May also be activated by intracellular calcium store depletion.

#### **TRPC4 Antibody (aa930-947, clone S77-15) - References**

McKay R.R., et al. *Biochem. J.* 351:735-746(2000).  
Mery L., et al. *FEBS Lett.* 487:377-383(2001).  
Schaefer M., et al. *J. Biol. Chem.* 277:3752-3759(2002).  
Dunham A., et al. *Nature* 428:522-528(2004).  
Mural R.J., et al. Submitted (JUL-2005) to the EMBL/GenBank/DDBJ databases.