

CHCHD3 Antibody (Internal)
Goat Polyclonal Antibody
Catalog # ALS14682**Specification**

CHCHD3 Antibody (Internal) - Product Information

| | |
|-------------------|------------------------|
| Application | WB, IHC |
| Primary Accession | Q9NX63 |
| Reactivity | Human |
| Host | Goat |
| Clonality | Polyclonal |
| Calculated MW | 26kDa KDa |

CHCHD3 Antibody (Internal) - Additional Information**Gene ID** 54927**Other Names**

MICOS complex subunit MIC19, Coiled-coil-helix-coiled-coil-helix domain-containing protein 3, CHCHD3, MIC19, MINOS3

Target/Specificity

Human CHCHD3.

Reconstitution & Storage

Short term 4°C, long term aliquot and store at -20°C, avoid freeze thaw cycles.

Precautions

CHCHD3 Antibody (Internal) is for research use only and not for use in diagnostic or therapeutic procedures.

CHCHD3 Antibody (Internal) - Protein Information**Name** CHCHD3**Synonyms** MIC19, MINOS3**Function**

Component of the MICOS complex, a large protein complex of the mitochondrial inner membrane that plays crucial roles in the maintenance of crista junctions, inner membrane architecture, and formation of contact sites to the outer membrane. Has also been shown to function as a transcription factor which binds to the BAG1 promoter and represses BAG1 transcription. Plays an important role in the maintenance of the MICOS complex stability and the mitochondrial cristae morphology (PubMed:25781180).

Cellular Location

Mitochondrion inner membrane {ECO:0000250|UniProtKB:Q9CRB9}; Lipid-anchor; Intermembrane

side {ECO:0000250|UniProtKB:Q9CRB9}. Cytoplasm. Nucleus Mitochondrion

Tissue Location

Detected at low levels in brain, placenta, lung, liver, kidney and pancreas with increased levels in heart and skeletal muscle. Higher expression in primary lung cancers than in normal lung tissue.

CHCHD3 Antibody (Internal) - Protocols

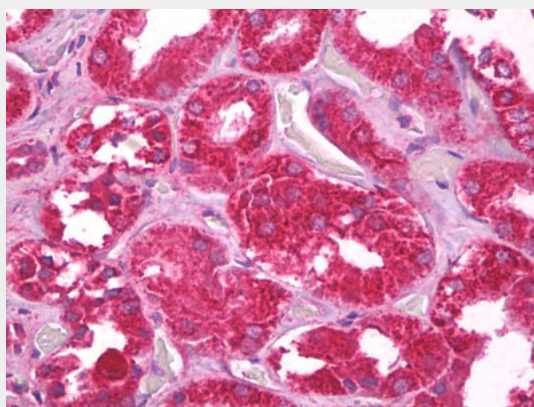
Provided below are standard protocols that you may find useful for product applications.

- [Western Blot](#)
- [Blocking Peptides](#)
- [Dot Blot](#)
- [Immunohistochemistry](#)
- [Immunofluorescence](#)
- [Immunoprecipitation](#)
- [Flow Cytometry](#)
- [Cell Culture](#)

CHCHD3 Antibody (Internal) - Images



CHCHD3 antibody (0.3 ug/ml) staining of Human Placenta lysate (35 ug protein/ml in RIPA buffer).



Anti-CHCHD3 antibody IHC of human kidney.

CHCHD3 Antibody (Internal) - Background

Component of the MICOS complex, a large protein complex of the mitochondrial inner membrane

that plays crucial roles in the maintenance of crista junctions, inner membrane architecture, and formation of contact sites to the outer membrane. Has also been shown to function as a transcription factor which binds to the BAG1 promoter and represses BAG1 transcription.

CHCHD3 Antibody (Internal) - References

Ota T.,et al.Nat. Genet. 36:40-45(2004).
Daub H.,et al.Mol. Cell 31:438-448(2008).
Dephoure N.,et al.Proc. Natl. Acad. Sci. U.S.A. 105:10762-10767(2008).
Mayya V.,et al.Sci. Signal. 2:RA46-RA46(2009).
Choudhary C.,et al.Science 325:834-840(2009).