

ESRP1 / RBM35A Antibody (N-Terminus)
Rabbit Polyclonal Antibody
Catalog # ALS14763**Specification**

ESRP1 / RBM35A Antibody (N-Terminus) - Product Information

Application	IF
Primary Accession	Q6NXG1
Reactivity	Human
Host	Rabbit
Clonality	Polyclonal
Calculated MW	76kDa KDa

ESRP1 / RBM35A Antibody (N-Terminus) - Additional Information**Gene ID** 54845**Other Names**

Epithelial splicing regulatory protein 1, RNA-binding motif protein 35A, RNA-binding protein 35A, ESRP1, RBM35A

Target/Specificity

Human ESRP1 / RBM35A. RBM35A antibody is predicted to not cross-react with other RBM35/ESRP family members. At least five isoforms of RBM35A are known to exist; this antibody will detect all five.

Reconstitution & Storage

Short term 4°C, long term aliquot and store at -20°C, avoid freeze thaw cycles. Store undiluted.

Precautions

ESRP1 / RBM35A Antibody (N-Terminus) is for research use only and not for use in diagnostic or therapeutic procedures.

ESRP1 / RBM35A Antibody (N-Terminus) - Protein Information**Name** ESRP1**Synonyms** RBM35A**Function**

mRNA splicing factor that regulates the formation of epithelial cell-specific isoforms. Specifically regulates the expression of FGFR2-IIIb, an epithelial cell-specific isoform of FGFR2. Also regulates the splicing of CD44, CTNND1, ENAH, 3 transcripts that undergo changes in splicing during the epithelial-to-mesenchymal transition (EMT). Acts by directly binding specific sequences in mRNAs. Binds the GU-rich sequence motifs in the ISE/ISS-3, a cis-element regulatory region present in the mRNA of FGFR2 (PubMed:19285943). Regulates splicing and expression of genes involved in inner ear development, auditory hair cell differentiation, and cell fate specification in the cochlear

epithelium (By similarity).

Cellular Location

Nucleus.

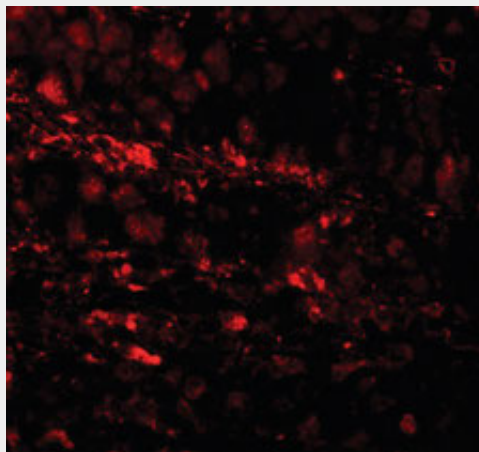
Tissue Location

Epithelial cell-specific.

ESRP1 / RBM35A Antibody (N-Terminus) - Protocols

Provided below are standard protocols that you may find useful for product applications.

- [Western Blot](#)
- [Blocking Peptides](#)
- [Dot Blot](#)
- [Immunohistochemistry](#)
- [Immunofluorescence](#)
- [Immunoprecipitation](#)
- [Flow Cytometry](#)
- [Cell Culture](#)

ESRP1 / RBM35A Antibody (N-Terminus) - Images

Immunofluorescence of RBM35A in human colon tissue cells with RBM35A antibody at 20 ug/ml.

ESRP1 / RBM35A Antibody (N-Terminus) - Background

mRNA splicing factor that regulates the formation of epithelial cell-specific isoforms. Specifically regulates the expression of FGFR2-IIIb, an epithelial cell-specific isoform of FGFR2. Also regulates the splicing of CD44, CTNND1, ENAH, 3 transcripts that undergo changes in splicing during the epithelial-to-mesenchymal transition (EMT). Acts by directly binding specific sequences in mRNAs. Binds the GU-rich sequence motifs in the ISE/ISS-3, a cis-element regulatory region present in the mRNA of FGFR2.

ESRP1 / RBM35A Antibody (N-Terminus) - References

Bechtel S.,et al.BMC Genomics 8:399-399(2007).
Nusbaum C.,et al.Nature 439:331-335(2006).
Ota T.,et al.Nat. Genet. 36:40-45(2004).
Warzecha C.C.,et al.Mol. Cell 33:591-601(2009).

