

**TRIP / LRRFIP1 Antibody (C-Terminus)**  
**Rabbit Polyclonal Antibody**  
**Catalog # ALS14768****Specification**

---

**TRIP / LRRFIP1 Antibody (C-Terminus) - Product Information**

Application	IF, WB, IHC
Primary Accession	<a href="#">Q32MZ4</a>
Reactivity	Human
Host	Rabbit
Clonality	Polyclonal
Calculated MW	89kDa KDa

**TRIP / LRRFIP1 Antibody (C-Terminus) - Additional Information****Gene ID** 9208**Other Names**

Leucine-rich repeat flightless-interacting protein 1, LRR FLII-interacting protein 1, GC-binding factor 2, TAR RNA-interacting protein, LRRFIP1, GCF2, TRIP

**Target/Specificity**

Human LRRFIP1. LRRFIP1 antibody is predicted to not cross-react with other LRRFIP family members. Three isoforms of LRRFIP1 are known to exist; this antibody will only recognize the two longer isoforms.

**Reconstitution & Storage**

Short term 4°C, long term aliquot and store at -20°C, avoid freeze thaw cycles. Store undiluted.

**Precautions**

TRIP / LRRFIP1 Antibody (C-Terminus) is for research use only and not for use in diagnostic or therapeutic procedures.

**TRIP / LRRFIP1 Antibody (C-Terminus) - Protein Information****Name** LRRFIP1**Synonyms** GCF2, TRIP**Function**

Transcriptional repressor which preferentially binds to the GC-rich consensus sequence (5'-AGCCCCCGGCG-3') and may regulate expression of TNF, EGFR and PDGFA. May control smooth muscle cells proliferation following artery injury through PDGFA repression. May also bind double-stranded RNA. Positively regulates Toll-like receptor (TLR) signaling in response to agonist probably by competing with the negative FLII regulator for MYD88-binding.

**Cellular Location**

Nucleus. Cytoplasm.

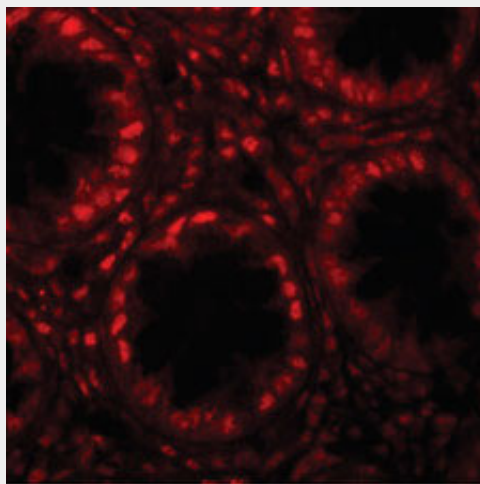
**Tissue Location**

Ubiquitously expressed.

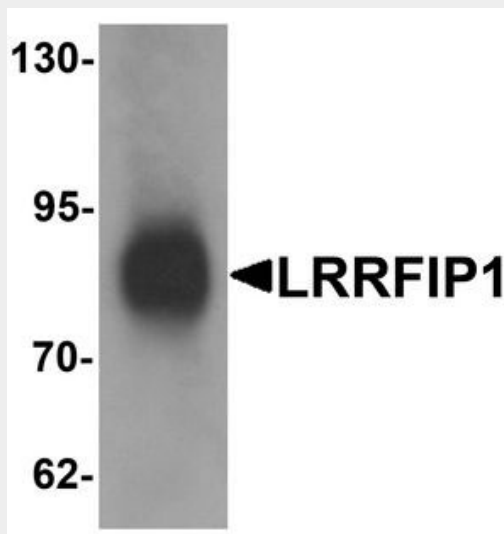
**TRIP / LRRFIP1 Antibody (C-Terminus) - Protocols**

Provided below are standard protocols that you may find useful for product applications.

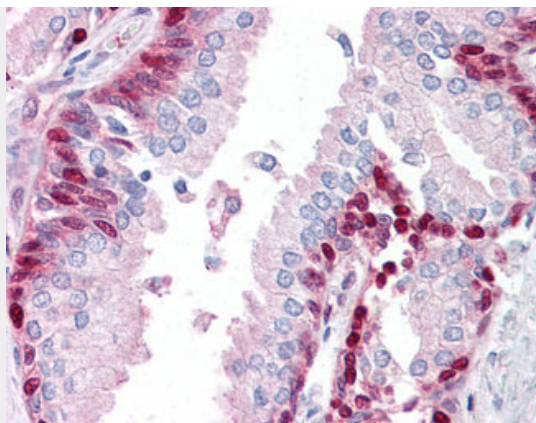
- [Western Blot](#)
- [Blocking Peptides](#)
- [Dot Blot](#)
- [Immunohistochemistry](#)
- [Immunofluorescence](#)
- [Immunoprecipitation](#)
- [Flow Cytometry](#)
- [Cell Culture](#)

**TRIP / LRRFIP1 Antibody (C-Terminus) - Images**

Immunofluorescence of LRRFIP1 in human colon tissue with LRRFIP1 antibody at 20 ug/ml.



Western blot analysis of LRRFIP1 in human colon tissue lysate with LRRFIP1 antibody at 1 ug/ml.



Anti-LRRFIP1 antibody IHC of human prostate.

#### **TRIP / LRRFIP1 Antibody (C-Terminus) - Background**

Transcriptional repressor which preferentially binds to the GC-rich consensus sequence (5'-AGCCCCCGGCG-3') and may regulate expression of TNF, EGFR and PDGFA. May control smooth muscle cells proliferation following artery injury through PDGFA repression. May also bind double-stranded RNA. Positively regulates Toll-like receptor (TLR) signaling in response to agonist probably by competing with the negative FLII regulator for MYD88-binding.

#### **TRIP / LRRFIP1 Antibody (C-Terminus) - References**

Reed A.L.,et al.J. Biol. Chem. 273:21594-21602(1998).  
Wilson S.A.,et al.Nucleic Acids Res. 26:3460-3467(1998).  
Hillier L.W.,et al.Nature 434:724-731(2005).  
Fong K.S.K.,et al.Genomics 58:146-157(1999).  
Khachigian L.M.,et al.Circ. Res. 84:1258-1267(1999).