

PDLIM1 Antibody (aa61-110)
Rabbit Polyclonal Antibody
Catalog # ALS14776**Specification**

PDLIM1 Antibody (aa61-110) - Product Information

Application	IF
Primary Accession	O00151
Reactivity	Human, Mouse, Rat
Host	Rabbit
Clonality	Polyclonal
Calculated MW	36kDa KDa

PDLIM1 Antibody (aa61-110) - Additional Information**Gene ID** 9124**Other Names**

PDZ and LIM domain protein 1, C-terminal LIM domain protein 1, Elfin, LIM domain protein CLP-36, PDLIM1, CLIM1, CLP36

Target/Specificity

PDLIM1 Antibody detects endogenous levels of total PDLIM1 protein.

Reconstitution & Storage

Short term 4°C, long term aliquot and store at -20°C, avoid freeze thaw cycles.

Precautions

PDLIM1 Antibody (aa61-110) is for research use only and not for use in diagnostic or therapeutic procedures.

PDLIM1 Antibody (aa61-110) - Protein Information**Name** PDLIM1**Synonyms** CLIM1, CLP36**Function**

Cytoskeletal protein that may act as an adapter that brings other proteins (like kinases) to the cytoskeleton (PubMed: <http://www.uniprot.org/citations/10861853> target="_blank">10861853). Involved in assembly, disassembly and directioning of stress fibers in fibroblasts. Required for the localization of ACTN1 and PALLD to stress fibers. Required for cell migration and in maintaining cell polarity of fibroblasts (By similarity).

Cellular Location

Cytoplasm. Cytoplasm, cytoskeleton. Cytoplasm, myofibril, sarcomere, Z line Note=Associates with actin stress fibers

Tissue Location

Strongly expressed in the heart and skeletal muscle, moderately expressed in the spleen, small intestine, colon, placenta, and lung. A lower level expression is seen in liver, thymus, kidney, prostate and pancreas and is not found in the brain, testis, ovary, and peripheral blood leukocytes

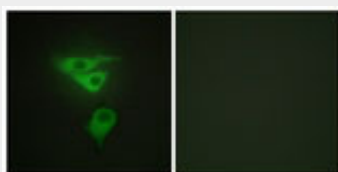
Volume

50 µl

PDLIM1 Antibody (aa61-110) - Protocols

Provided below are standard protocols that you may find useful for product applications.

- [Western Blot](#)
- [Blocking Peptides](#)
- [Dot Blot](#)
- [Immunohistochemistry](#)
- [Immunofluorescence](#)
- [Immunoprecipitation](#)
- [Flow Cytometry](#)
- [Cell Culture](#)

PDLIM1 Antibody (aa61-110) - Images

Immunofluorescence of HepG2 cells, using PDLIM1 Antibody.

PDLIM1 Antibody (aa61-110) - Background

Cytoskeletal protein that may act as an adapter that brings other proteins (like kinases) to the cytoskeleton.

PDLIM1 Antibody (aa61-110) - References

Kotaka M., et al. J. Cell. Biochem. 72:279-285(1999).
Bauer K., et al. Blood 96:4236-4245(2000).
Ota T., et al. Nat. Genet. 36:40-45(2004).
Deloukas P., et al. Nature 429:375-381(2004).
Gevaert K., et al. Nat. Biotechnol. 21:566-569(2003).