

**CBFB Antibody (aa11-60)**  
**Rabbit Polyclonal Antibody**  
**Catalog # ALS14785****Specification**

---

**CBFB Antibody (aa11-60) - Product Information**

Application	WB
Primary Accession	<a href="#">Q13951</a>
Reactivity	Human, Mouse, Rat
Host	Rabbit
Clonality	Polyclonal
Calculated MW	22kDa KDa

**CBFB Antibody (aa11-60) - Additional Information****Gene ID** 865**Other Names**

Core-binding factor subunit beta, CBF-beta, Polyomavirus enhancer-binding protein 2 beta subunit, PEA2-beta, PEBP2-beta, SL3-3 enhancer factor 1 subunit beta, SL3/AKV core-binding factor beta subunit, CBFB

**Target/Specificity**

CBF beta Antibody detects endogenous levels of total CBF beta protein.

**Reconstitution & Storage**

Short term 4°C, long term aliquot and store at -20°C, avoid freeze thaw cycles.

**Precautions**

CBFB Antibody (aa11-60) is for research use only and not for use in diagnostic or therapeutic procedures.

**CBFB Antibody (aa11-60) - Protein Information****Name** CBFB**Function**

Forms the heterodimeric complex core-binding factor (CBF) with RUNX family proteins (RUNX1, RUNX2, and RUNX3). RUNX members modulate the transcription of their target genes through recognizing the core consensus binding sequence 5'-TGTGGT-3', or very rarely, 5'-TGCGGT-3', within their regulatory regions via their runt domain, while CBFB is a non-DNA-binding regulatory subunit that allosterically enhances the sequence-specific DNA-binding capacity of RUNX. The heterodimers bind to the core site of a number of enhancers and promoters, including murine leukemia virus, polyomavirus enhancer, T-cell receptor enhancers, LCK, IL3 and GM-CSF promoters. CBF complexes repress ZBTB7B transcription factor during cytotoxic (CD8+) T cell development. They bind to RUNX-binding sequence within the ZBTB7B locus acting as transcriptional silencer and allowing for cytotoxic T cell differentiation.

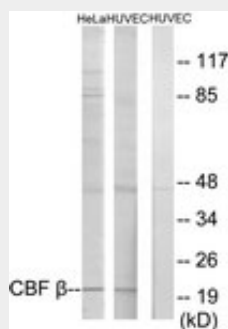
**Cellular Location**

Nucleus.

**Volume**50  $\mu$ l**CBFB Antibody (aa11-60) - Protocols**

Provided below are standard protocols that you may find useful for product applications.

- [Western Blot](#)
- [Blocking Peptides](#)
- [Dot Blot](#)
- [Immunohistochemistry](#)
- [Immunofluorescence](#)
- [Immunoprecipitation](#)
- [Flow Cytometry](#)
- [Cell Culture](#)

**CBFB Antibody (aa11-60) - Images**

Western blot of extracts from HUVEC/HeLa cells, using CBF beta Antibody.

**CBFB Antibody (aa11-60) - Background**

CBF binds to the core site, 5'-PYGPYGGT-3', of a number of enhancers and promoters, including murine leukemia virus, polyomavirus enhancer, T-cell receptor enhancers, LCK, IL3 and GM-CSF promoters. CBFB enhances DNA binding by RUNX1.

**CBFB Antibody (aa11-60) - References**

Liu P.P., et al. Submitted (AUG-2000) to the EMBL/GenBank/DDBJ databases.  
Kalnina N., et al. Submitted (MAY-2003) to the EMBL/GenBank/DDBJ databases.  
Ota T., et al. Nat. Genet. 36:40-45(2004).  
Mural R.J., et al. Submitted (JUL-2005) to the EMBL/GenBank/DDBJ databases.  
Hajra A., et al. Genomics 26:571-579(1995).