

**HP / Haptoglobin Antibody (clone 26E11)**  
**Mouse Monoclonal Antibody**  
**Catalog # ALS14806****Specification**

---

**HP / Haptoglobin Antibody (clone 26E11) - Product Information**

Application	WB, IHC
Primary Accession	<a href="#">P00738</a>
Reactivity	Human
Host	Mouse
Clonality	Monoclonal
Calculated MW	45kDa KDa

**HP / Haptoglobin Antibody (clone 26E11) - Additional Information****Gene ID** 3240**Other Names**

Haptoglobin, Zonulin, Haptoglobin alpha chain, Haptoglobin beta chain, HP

**Reconstitution & Storage**

Short term 4°C, long term aliquot and store at -20°C, avoid freeze thaw cycles.

**Precautions**

HP / Haptoglobin Antibody (clone 26E11) is for research use only and not for use in diagnostic or therapeutic procedures.

**HP / Haptoglobin Antibody (clone 26E11) - Protein Information****Name** HP**Function**

As a result of hemolysis, hemoglobin is found to accumulate in the kidney and is secreted in the urine. Haptoglobin captures, and combines with free plasma hemoglobin to allow hepatic recycling of heme iron and to prevent kidney damage. Haptoglobin also acts as an antioxidant, has antibacterial activity, and plays a role in modulating many aspects of the acute phase response. Hemoglobin/haptoglobin complexes are rapidly cleared by the macrophage CD163 scavenger receptor expressed on the surface of liver Kupfer cells through an endocytic lysosomal degradation pathway.

**Cellular Location**

Secreted.

**Tissue Location**

Expressed by the liver and secreted in plasma.

**Volume**

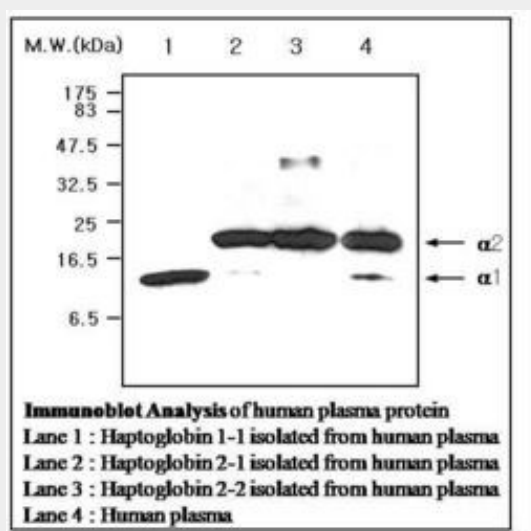
50 µl

## HP / Haptoglobin Antibody (clone 26E11) - Protocols

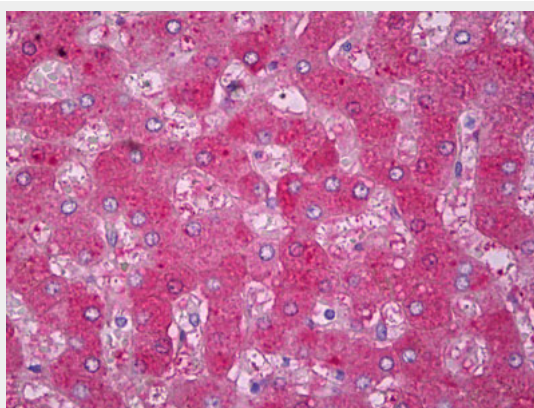
Provided below are standard protocols that you may find useful for product applications.

- [Western Blot](#)
- [Blocking Peptides](#)
- [Dot Blot](#)
- [Immunohistochemistry](#)
- [Immunofluorescence](#)
- [Immunoprecipitation](#)
- [Flow Cytometry](#)
- [Cell Culture](#)

## HP / Haptoglobin Antibody (clone 26E11) - Images



0



Anti-Haptoglobin antibody IHC of human liver.

## HP / Haptoglobin Antibody (clone 26E11) - Background

As a result of hemolysis, hemoglobin is found to accumulate in the kidney and is secreted in the urine. Haptoglobin captures, and combines with free plasma hemoglobin to allow hepatic recycling of heme iron and to prevent kidney damage. Haptoglobin also acts as an Antimicrobial; Antioxidant, has antibacterial activity and plays a role in modulating many aspects of the acute phase response.

Hemoglobin/haptoglobin complexes are rapidly cleared by the macrophage CD163 scavenger receptor expressed on the surface of liver Kupfer cells through an endocytic lysosomal degradation pathway.

**HP / Haptoglobin Antibody (clone 26E11) - References**

van der Straten A.,et al.EMBO J. 2:1003-1007(1983).  
Yang F.,et al.Proc. Natl. Acad. Sci. U.S.A. 80:5875-5879(1983).  
van der Straten A.,et al.FEBS Lett. 168:103-107(1984).  
Brune J.L.,et al.Nucleic Acids Res. 12:4531-4538(1984).  
Bensi G.,et al.EMBO J. 4:119-126(1985).